

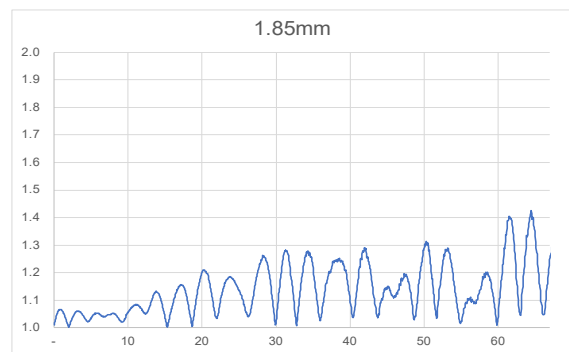
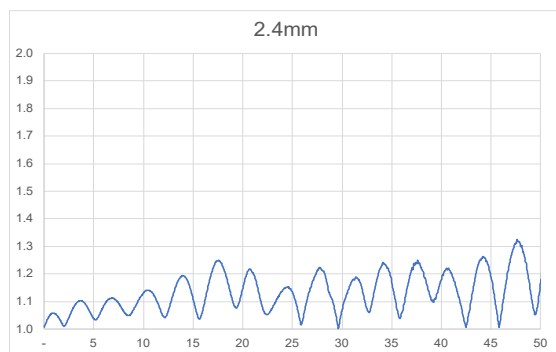
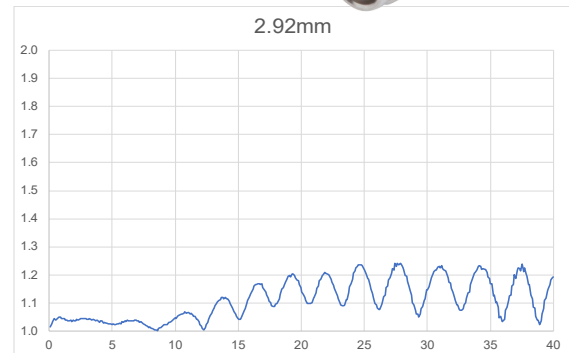
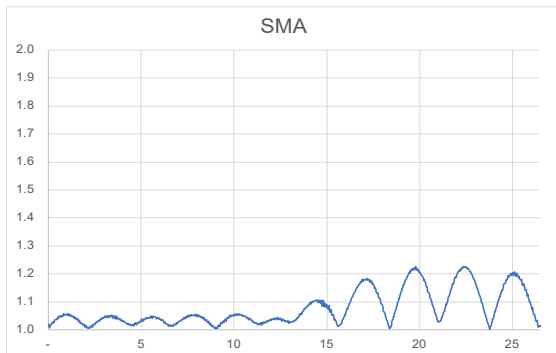
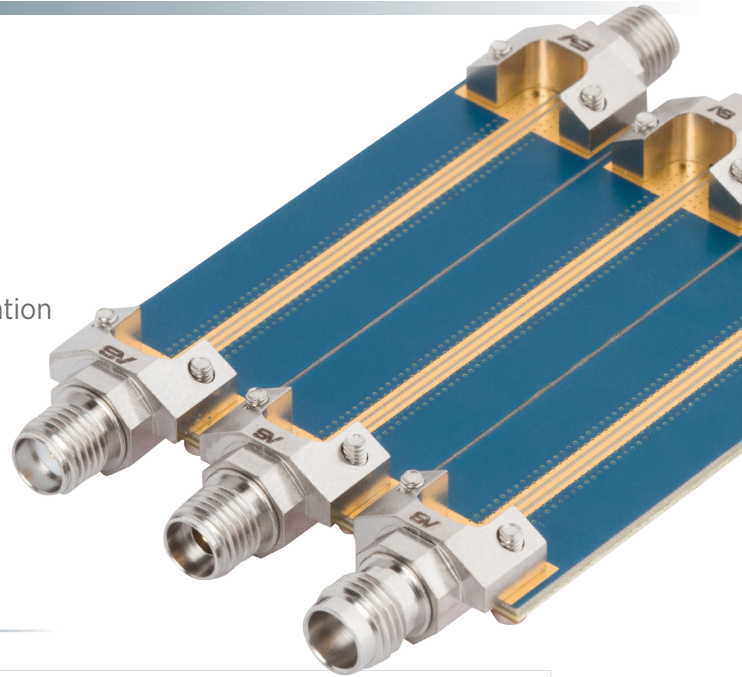
Solderless PCB Edge Launch Connectors

Features & Benefits

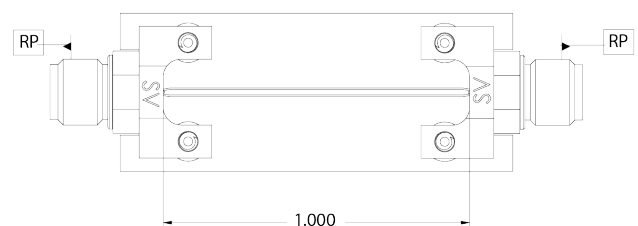
- Solderless compression mount
- Fast and easy installation using included screws and washers
- Cost effective solutions for testing
- Durable and rugged design
- Customized PCB footprint design through simulation optimization
- Accommodates multiple PCB thicknesses

Applications

- RF test and measurement boards
- Rapid prototyping
- High Speed Digital component test
- Military and Aerospace



Plots represent full path VSWSR measurements (connector to connector) on a 1" trace, 10 mil thick Rogers 3003 microstrip stackup.



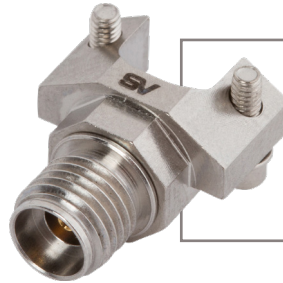
Specifications

Electrical	SMA	2.92mm	2.4mm	1.85mm
Impedance	50Ω	50Ω	50Ω	50Ω
Max Frequency	26.5 GHz	40 GHz	50 GHz	67 GHz
Mechanical	SMA	2.92mm	2.4mm	1.85mm
Intermateability	3.5mm, 2.92mm	SMA, 3.5mm	1.85mm	2.4mm
Mating*	7 - 10 in - lbs	7 - 10 in - lbs	5 - 7 in - lbs	5 - 7 in - lbs
Board Mount*	12 in - oz	12 in - oz	12 in - oz	12 in - oz

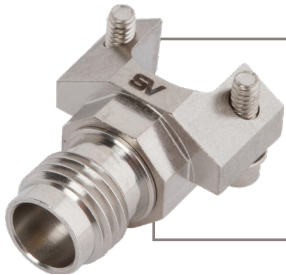
*Recommended



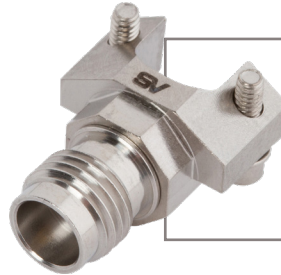
SF2921-61450
SMA Female Solderless
PCB Edge Launch
Connector, 2 Hole



SF1521-60107
2.92mm Female Solderless
PCB Edge Launch
Connector, 2 Hole

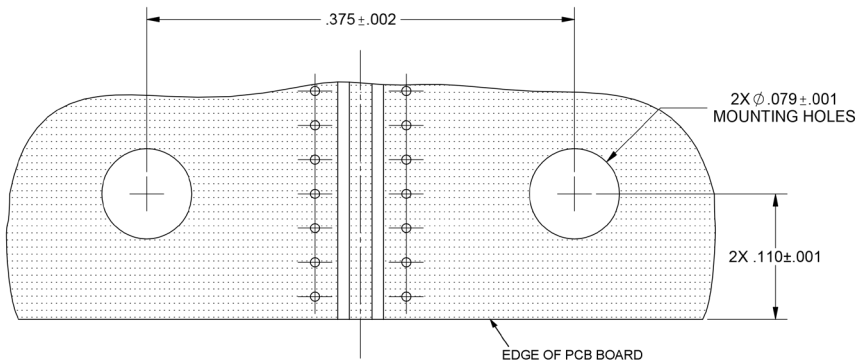


SF1621-60036
2.4mm Female Solderless
PCB Edge Launch
Connector, 2 Hole



SF3321-60021
1.85mm Female Solderless
PCB Edge Launch
Connector, 2 Hole

Recommended Mounting



Solderless Edge Launch Line

Series	Sex	Part Number
SMA	F	SF2921-61450
2.92mm	F	SF1521-60107
2.4mm	F	SF1621-60036
1.85mm	F	SF3321-60021