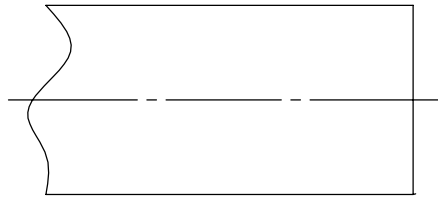
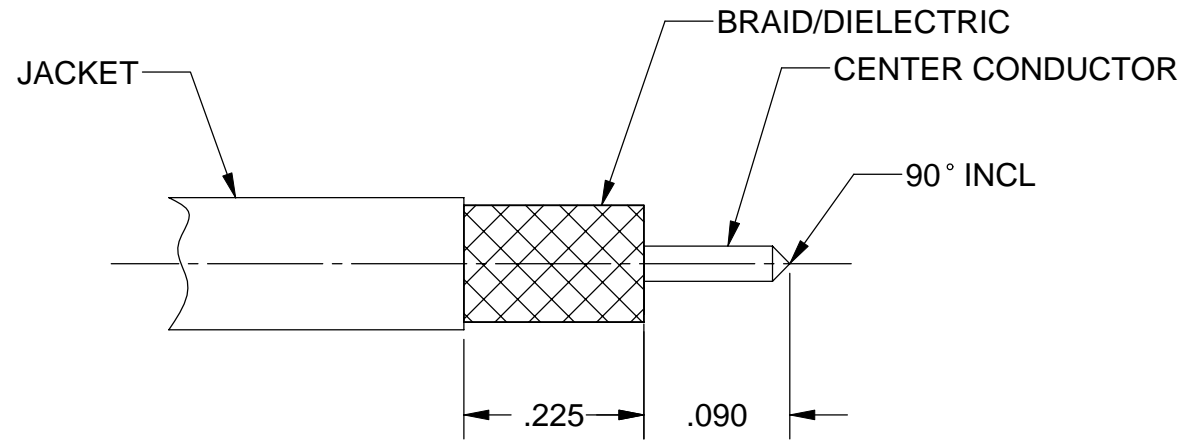


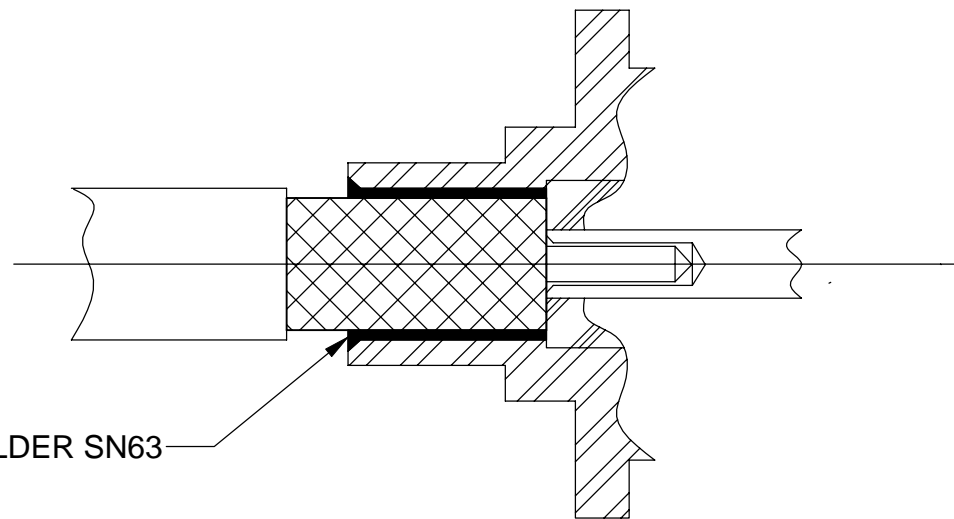
REVISION HISTORY			
REV	DESCRIPTION	DATE	APPROVED
-	REL. DNRN 34262	08/21/07	STW



FLUSH-CUT END OF CABLE PRIOR TO REMOVING THE OUTER JACKET. DIP END OF CABLE INTO FLUX AND THEN INTO SOLDER POT, MAINTAINED AT 500°F, TO A DEPTH OF 3/8 INCH FOR 6 SECONDS MAX. SN63 SOLDER IS RECOMMENDED.



AFTER PRE-TINNING TRIM CABLE JACKET AND DIELECTRIC TO DIMENSIONS SHOWN, POINT CENTER CONDUCTOR 90° AS SHOWN.



INSERT CABLE INTO REAR OF CONNECTOR. CENTER CONDUCTOR WILL MATE WITH FEMALE CONTACT WITHIN CONNECTOR. SOFT SOLDER CABLE TO CONNECTOR.

SOFT SOLDER SN63

MATERIAL:	DIMENSIONS ARE IN INCHES TOLERANCES:	UNLESS OTHERWISE SPECIFIED	<b>SV Microwave, Inc.</b> 2400 Centrepark West Drive, Suite 100 West Palm Beach, FL 33409
FINISH: PER BOM	FRACTIONAL: $\pm 1/64$ ANGULAR: X° $\pm 1'0''$ X'X' $\pm 15'$	1) ALL DIMENSIONS ARE AFTER PLATING. 2) BREAK CORNERS & EDGES .005 R. MAX. 3) CHAM. 1ST & LAST THREADS. 4) SURFACE ROUGHNESS 63√ MIL-STD-10. 5) DIA.'S ON COMMON CENTERS TO BE CONCENTRIC WITHIN T.I.R. 6) REMOVE ALL BURRS	
SURFACE AREA:	DECIMAL: X $\pm .030$ .XX $\pm .010$ .XXX $\pm .005$	INTERPRET DIMENSIONS AND TOLERANCES PER ASME Y14.5M - 1994	TITLE: CABLE ASSEMBLY INSTRUCTIONS
PROPRIETARY	THIRD ANGLE PROJECTION	DRAWN: JMC 08/21/07	SIZE: B CAGE CODE: 95077 DWG. NO.: 300-89-010
SK-2473, SK-2474	USED ON:	APPROVED: STW 08/21/07	SCALE: 1:1 SHEET 1 OF 1
THE INFORMATION CONTAINED IN THIS DRAWING IS THE SOLE PROPERTY OF SV MICROWAVE, INC. ANY REPRODUCTION IN PART OR AS A WHOLE WITHOUT THE WRITTEN PERMISSION OF SV MICROWAVE, INC IS PROHIBITED.		E.M. SIMULATION: N/A	