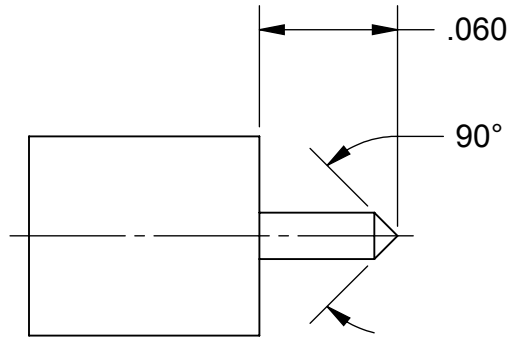
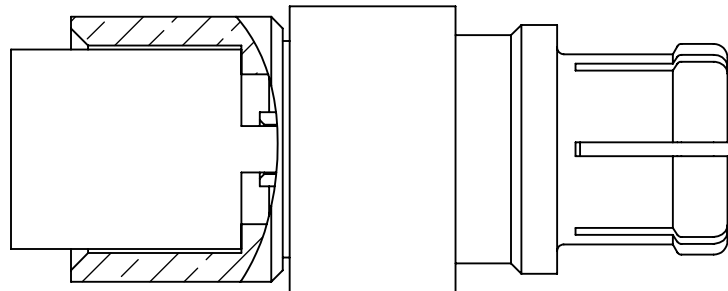


REVISION HISTORY			
REV	DESCRIPTION	DATE	APPROVED
-	NRN 34817	07/08	STW
A	DCN 40830	09/14	STW



STEP 1:
 TRIM CABLE OUTER CONDUCTOR, DIELECTRIC AND CENTER CONDUCTOR AS SHOWN. DO NOT NICK CENTER CONDUCTOR. TRIM CABLE JACKET BACK AT LEAST 0.065" WHEN APPLICABLE

STEP 2:
 INSTALL TRIMMED CABLE INTO CONNECTOR BODY UNTIL CABLE BOTTOMS ON CONNECTOR AS SHOWN.



STEP 3:
 SOFT SOLDER CABLE OUTER CONDUCTOR TO CONNECTOR BODY..

MATERIAL:	N/A	DIMENSIONS ARE IN INCHES TOLERANCES:		UNLESS OTHERWISE SPECIFIED		SV Microwave, Inc. 2400 Centrepark West Drive, Suite 100 West Palm Beach, FL 33409	
FINISH:	N/A	FRACTIONAL: ±1/64 ANGULAR: X° ±1°0' / X'X' ±15' DECIMAL: .X ±.030 .XX ±.010 .XXX ±.005		1) ALL DIMENSIONS ARE AFTER PLATING. 2) BREAK CORNERS & EDGES .005 R. MAX. 3) CHAM. 1ST & LAST THREADS. 4) SURFACE ROUGHNESS 63 / MIL-STD-10. 5) DIA.'S ON COMMON CENTERS TO BE CONCENTRIC WITHIN .005 T.I.R. 6) REMOVE ALL BURRS			
SURFACE AREA:	N/A	INTERPRET DIMENSIONS AND TOLERANCES PER ASME Y14.5M - 1994		DRAWN: DAL 07/21/08		TITLE: CABLE ASSEMBLY INSTRUCTIONS SIZE: A CAGE CODE: 95077 DWG. NO.: 300-32-014	
PROPRIETARY THE INFORMATION CONTAINED IN THIS DRAWING IS THE SOLE PROPERTY OF SV MICROWAVE, INC. ANY REPRODUCTION IN PART OR AS A WHOLE WITHOUT THE WRITTEN PERMISSION OF SV MICROWAVE, INC IS PROHIBITED.		THIRD ANGLE PROJECTION		CHECKED: STW 07/21/08			
3221-40006	USED ON:			APPROVED: STW 07/21/08		SCALE: 12:1	
				E.M. SIMULATION: N/A		SHEET 1 OF 1	