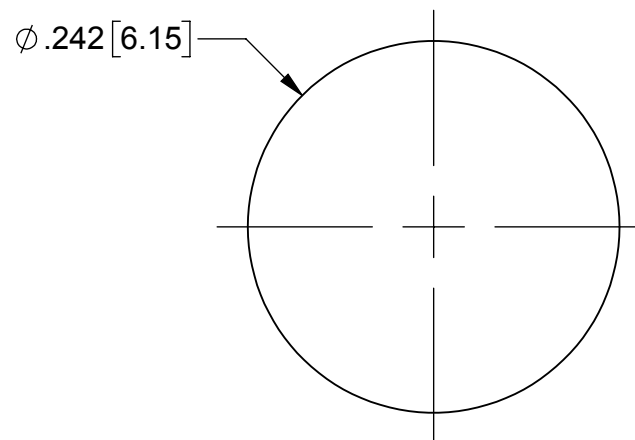
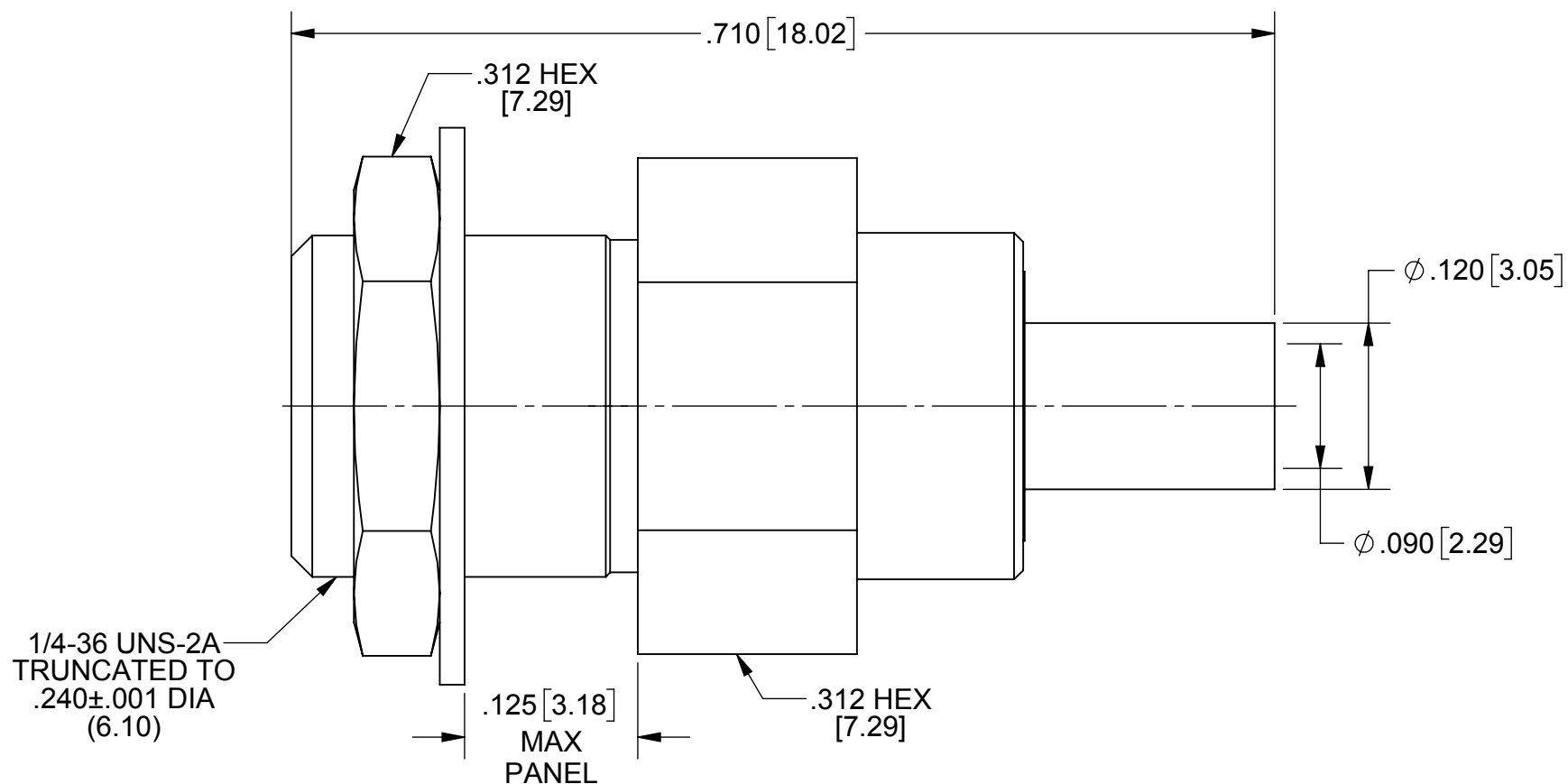


PRODUCT DATA DRAWING

REVISION HISTORY			
REV	DESCRIPTION	DATE	APPROVED
A	DCN 43104	02/17	MAL



RECOMMENDED MOUNTING HOLE

MATERIAL:

OUTER BODY,
INNER BODY,
HEX NUT &
WASHER:

STAINLESS STEEL PER AMS-5640.
UNS 30300,TYPE 1

CONTACTS:

BERYLLIUM COPPER PER ASTM B196,
ALLOY No. UNS C17300, TD04

INSULATOR:

TEFLON PER ASTM-D-1710

FINISH:

OUTER BODY,
INNER BODY,
HEX NUT:

GOLD PER MIL-G-45204, TYPE 1
GRADE C, CLASS 00; OVER NICKEL
PER QQ-N-290, CLASS 2.

CONTACTS &
INNER BODY:

GOLD PER MIL-G-45204, TYPE 1
GRADE C, CLASS 00; OVER NICKEL
PER QQ-N-290, CLASS 2.

PERFORMANCE:

IMPEDANCE: 50 OHMS
FREQ. RANGE: DC TO 28.0 GHz
DWV: 675 VRMS
INSUL. RES.: 5000 MEGAOHMS. MIN

MATERIAL: SEE NOTES	DIMENSIONS ARE IN INCHES TOLERANCES: FRACTIONAL: ±1/64 ANGULAR: X° ±1'0" X°X' ±15'	UNLESS OTHERWISE SPECIFIED 1) ALL DIMENSIONS ARE IN INCHES (MILLIMETERS) 2) ALL DIMENSIONS ARE AFTER PLATING. 3) BREAK CORNERS & EDGES .005 R. MAX. 4) CHAM. 1ST & LAST THREADS. 5) SURFACE ROUGHNESS 63 MIL-STD-10. 6) DIA.'S ON COMMON CENTERS TO BE CONCENTRIC WITHIN .005 T.I.R. 7) REMOVE ALL BURRS	 2400 Centrepark West Drive, Suite 100 West Palm Beach, FL 33409 TITLE: BMMA JACK BLKHD CONNECTOR
FINISH: SEE NOTES	DECIMAL: X ±.030 .XX ±.010 .XXX ±.005	INTERPRET DIMENSIONS AND TOLERANCES PER ASME Y14.5M - 1994	
SURFACE AREA: N/A	THIRD ANGLE PROJECTION	DRAWN: VB 02/16/17	SIZE: B CAGE CODE: 95077 DWG. NO.: 1444-6001
PROPRIETARY THE INFORMATION CONTAINED IN THIS DRAWING IS THE SOLE PROPERTY OF SV MICROWAVE, INC. ANY REPRODUCTION IN PART OR AS A WHOLE WITHOUT THE WRITTEN PERMISSION OF SV MICROWAVE, INC IS PROHIBITED.		CHECKED: MAL 02/16/17	SCALE: 4:1
		APPROVED: MAL 02/16/17	SHEET 1 OF 1