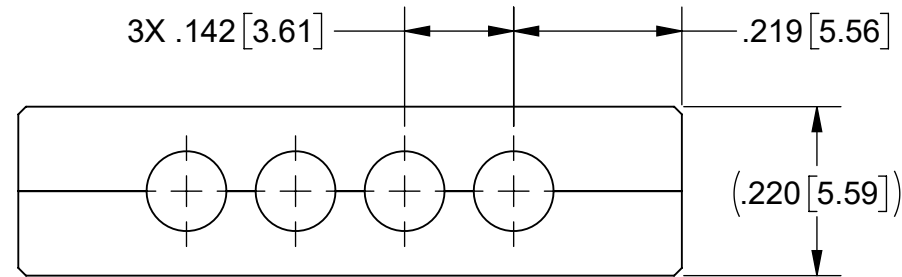
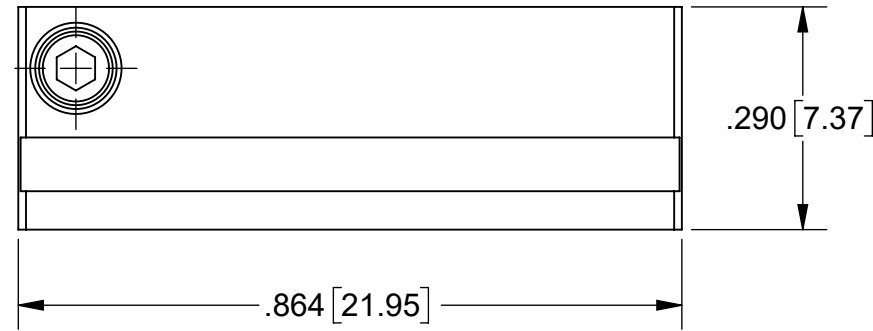
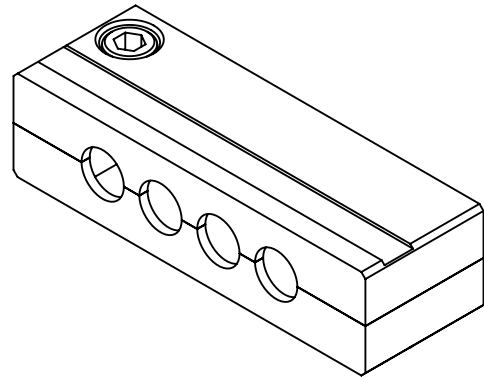


PRODUCT DATA DRAWING

REVISION HISTORY			
REV	DESCRIPTION	DATE	APPROVED
-	NRN 49904	03/26	SEE PDM



MATERIAL:

CLAMSHELL BODIES: ALUMINUM PER ASTM B211 ALLOY 6061-T6 OR AMS-QQ-A-200/8 ALLOY 6061-T6

DOWEL PINS & MOUNTING SCREWS: 18-8 STAINLESS STEEL

FINISH:

CLAMSHELL BODIES: ANODIZE PER MIL-A-8625, TYPE II, CLASS 1 (CLEAR)

DOWEL PINS & MOUNTING SCREWS: PASSIVATED

NOTE:

- DESIGNED TO USE WITH SMPM FEMALE CONNECTORS, SV P/N: 3221-40006 & 3221-40007. MATES TO 9311-00038 OR SIMILAR.

MATERIAL: SEE NOTES	DIMENSIONS ARE IN INCHES TOLERANCES: FRACTIONAL: $\pm 1/64$ ANGULAR: X° $\pm 1'0''$ X°X' $\pm 15''$	UNLESS OTHERWISE SPECIFIED 1) ALL DIMENSIONS ARE IN INCHES (MILLIMETERS) 2) ALL DIMENSIONS ARE AFTER PLATING 3) BREAK CORNERS & EDGES .005 R. MAX. 4) CHAM. 1ST & LAST THREADS. 5) SURFACE ROUGHNESS 63-MIL-STD-10. 6) DIA: 'S' ON COMMON CENTERS TO BE CONCENTRIC WITHIN .005 T.I.R. 7) REMOVE ALL BURRS	
FINISH: SEE NOTES	DECIMAL: X $\pm .030$.XX $\pm .010$.XXX $\pm .005$	INTERPRET DIMENSIONS AND TOLERANCES PER ASME Y14.5M - 1994	
SURFACE AREA: N/A	THIRD ANGLE PROJECTION	DRAWN: KRR 03/27/26	TITLE: 4 PORT CLAMSHELL HARDWARE
<p>PROPRIETARY</p> <p>THE INFORMATION CONTAINED IN THIS DRAWING IS THE SOLE PROPERTY OF SV MICROWAVE, INC. ANY REPRODUCTION IN PART OR AS A WHOLE WITHOUT THE WRITTEN PERMISSION OF SV MICROWAVE, INC IS PROHIBITED.</p>		CHECKED: SEE PDM	SIZE DWG. NO. B 9301-80029
		APPROVED: SEE PDM	SCALE: 4:1 SHEET 1 OF 1