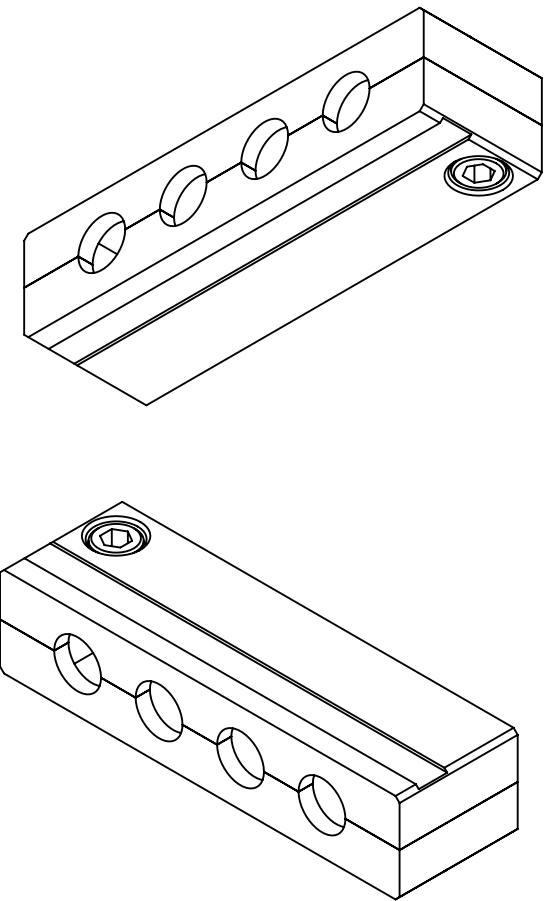
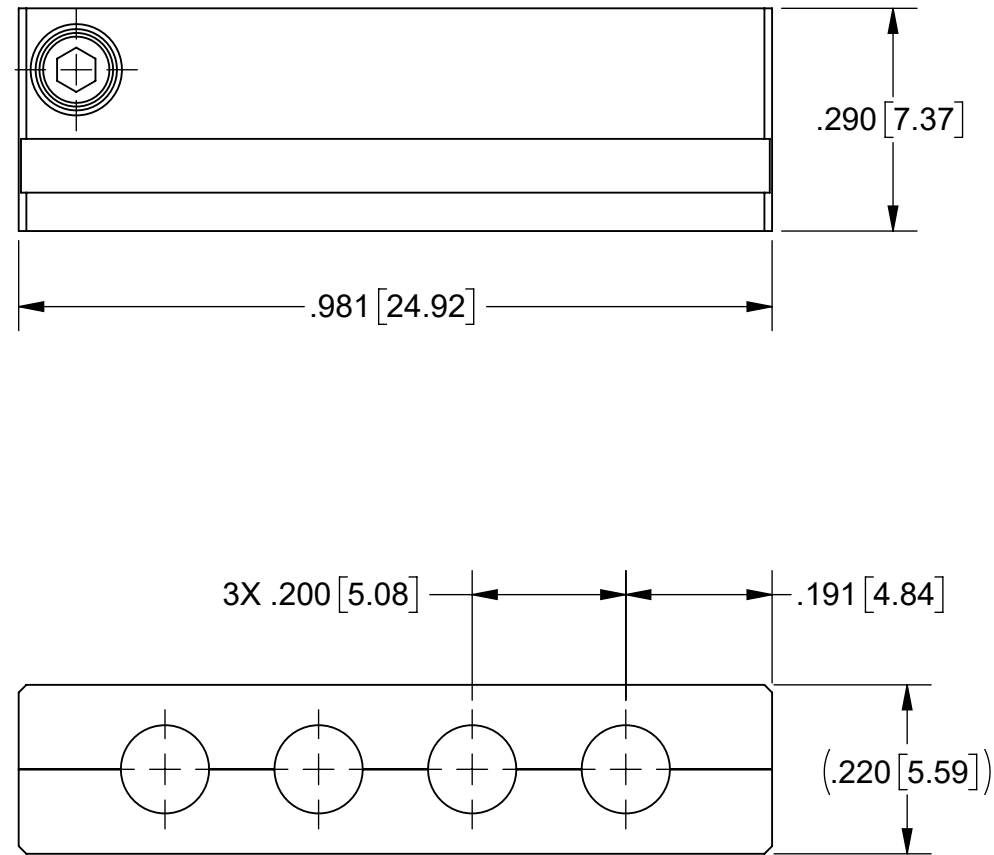


PRODUCT DATA DRAWING

REVISION HISTORY			
REV	DESCRIPTION	DATE	APPROVED
-	NRN 49598	11/25	SEE PDM



MATERIAL:

TOP CLAMSHELL BODY &
BOTTOM CLAMSHELL BODY: ALUMINUM PER ASTM B211 ALLOY 6061-T6 OR
AMS-QQ-A-200/8 ALLOY 6061-T6

DOWEL PINS &
MOUNTING SCREWS: 18-8 STAINLESS STEEL


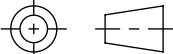
FINISH:

TOP CLAMSHELL BODY &
BOTTOM CLAMSHELL BODY: ANODIZE PER MIL-A-8625, TYPE II, CLASS 1 (CLEAR)

DOWEL PINS &
MOUNTING SCREWS: PASSIVATED

NOTES:

- DESIGNED TO USE WITH SMP FEMALE CONNECTOR FOR Ø.085 CABLE, SV P/N: 1221-4009. MATES TO 9311-60036-60038, 9311-00036, 9311-00064 OR SIMILAR.

MATERIAL: SEE NOTES	DIMENSIONS ARE IN INCHES TOLERANCES: FRACTIONAL: ±1/64 ANGULAR: X° ±1'0" X'X' ±15'	UNLESS OTHERWISE SPECIFIED	 www.svmicrowave.com
FINISH: SEE NOTES	DECIMAL: X ±.030 .XX ±.010 .XXX ±.005	1) ALL DIMENSIONS ARE IN INCHES (MILLIMETERS) 2) ALL DIMENSIONS ARE AFTER PLATING. 3) BREAK CORNERS & EDGES .005 R. MAX. 4) CHAM. 1ST & LAST THREADS. 5) SURFACE ROUGHNESS 63-MIL-STD-10. 6) DIA.'S ON COMMON CENTERS TO BE CONCENTRIC WITHIN .005 T.I.R. 7) REMOVE ALL BURRS	
SURFACE AREA: N/A	INTERPRET DIMENSIONS AND TOLERANCES PER ASME Y14.5M - 1994	THIRD ANGLE PROJECTION	TITLE: 4 PORT CLAMSHELL HARDWARE
PROPRIETARY THE INFORMATION CONTAINED IN THIS DRAWING IS THE SOLE PROPERTY OF SV MICROWAVE, INC. ANY REPRODUCTION IN PART OR AS A WHOLE WITHOUT THE WRITTEN PERMISSION OF SV MICROWAVE, INC IS PROHIBITED.		DRAWN: SJ 11/24/25	SIZE DWG. NO. B 9301-80021
		CHECKED: SEE PDM	SCALE: 4:1
		APPROVED: SEE PDM	SHEET 1 OF 1