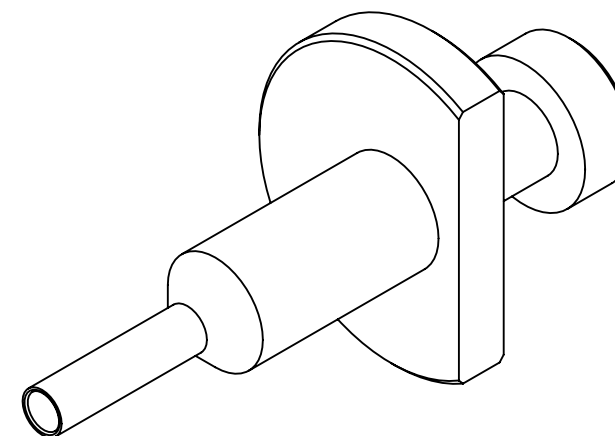
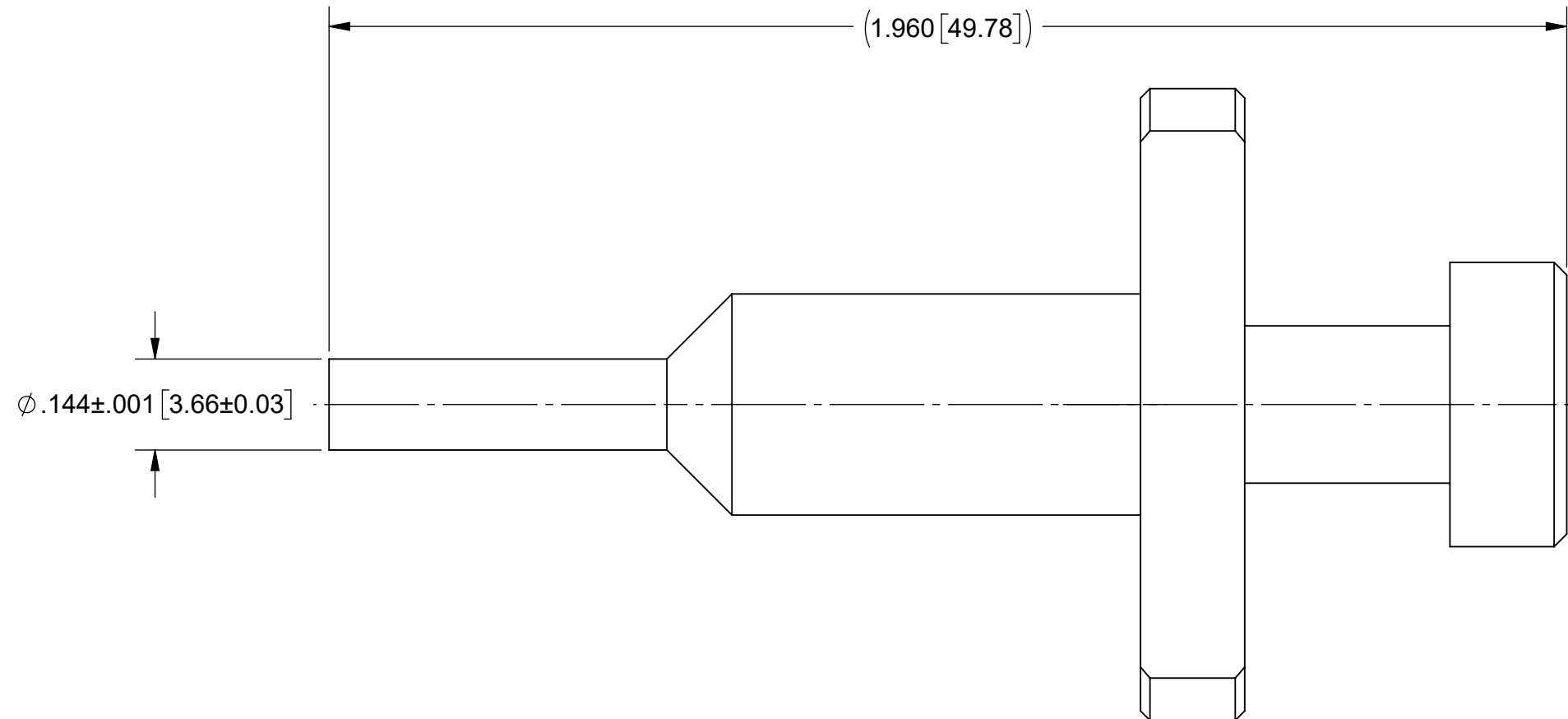


PRODUCT DATA DRAWING

REVISION HISTORY			
REV	DESCRIPTION	DATE	APPROVED
-	NRN 49805	02/26	SEE PDM



MATERIAL:

- BODY:** STAINLESS STEEL PER ASTM A564, TYPE 630, ALLOY UNS S17400, CONDITION A.
- PUSH ROD & PLUNGER:** STAINLESS STEEL PER AMS 5640, ALLOY UNS S30300, TYPE 1 OR ASTM A582, TYPE 303, CONDITION A.
- SPRING:** MUSIC WIRE PER ASTM A228.

FINISH:

- PUSH ROD & PLUNGER:** PASSIVATED PER AMS 2700.
- BODY:** ELECTROLESS NICKEL PER SAE 2404, CLASS 1.
- SPRING:** ZINC PLATE PER ASTM B633

- NOTES:**
- REMOVAL TOOL FOR 3811-60094 & 3811-60095.
 - USED ON SMPS 67.3 GEN 2 CONTACTS, RESPECTIVELY.

MATERIAL: SEE NOTES	DIMENSIONS ARE IN INCHES TOLERANCES: FRACTIONAL: $\pm 1/64$ ANGULAR: X° $\pm 1'0''$ X'X' $\pm 15'$	UNLESS OTHERWISE SPECIFIED 1) ALL DIMENSIONS ARE IN INCHES (MILLIMETERS) 2) ALL DIMENSIONS ARE AFTER PLATING. 3) BREAK CORNERS & EDGES .005 R. MAX. 4) CHAM. 1ST & LAST THREADS. 5) SURFACE ROUGHNESS 63-MIL-STD-10. 6) DIA: 'S ON COMMON CENTERS TO BE CONCENTRIC WITHIN .005 T.I.R. 7) REMOVE ALL BURRS	
FINISH: SEE NOTES	DECIMAL: X $\pm .030$.XX $\pm .010$.XXX $\pm .005$	INTERPRET DIMENSIONS AND TOLERANCES PER ASME Y14.5M - 1994	
SURFACE AREA: N/A	THIRD ANGLE PROJECTION	DRAWN: JDT 02/27/26	TITLE: SMPS VITA 67.3 GEN2 CONTACT REMOVAL TOOL
<p>PROPRIETARY</p> <p>THE INFORMATION CONTAINED IN THIS DRAWING IS THE SOLE PROPERTY OF SV MICROWAVE, INC. ANY REPRODUCTION IN PART OR AS A WHOLE WITHOUT THE WRITTEN PERMISSION OF SV MICROWAVE, INC IS PROHIBITED.</p>		CHECKED: SEE PDM	SIZE DWG. NO. B 500-38-021
		APPROVED: SEE PDM	SCALE: 4:1 SHEET 1 OF 1