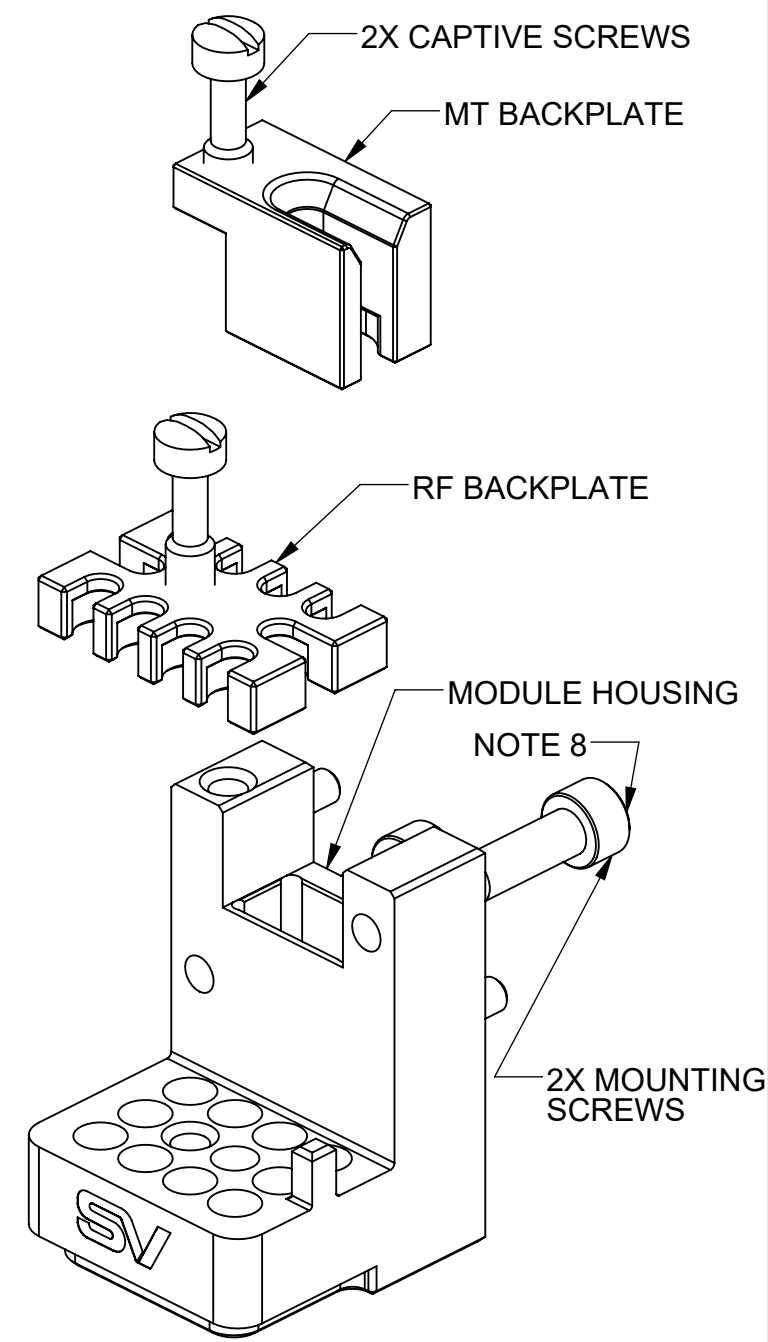
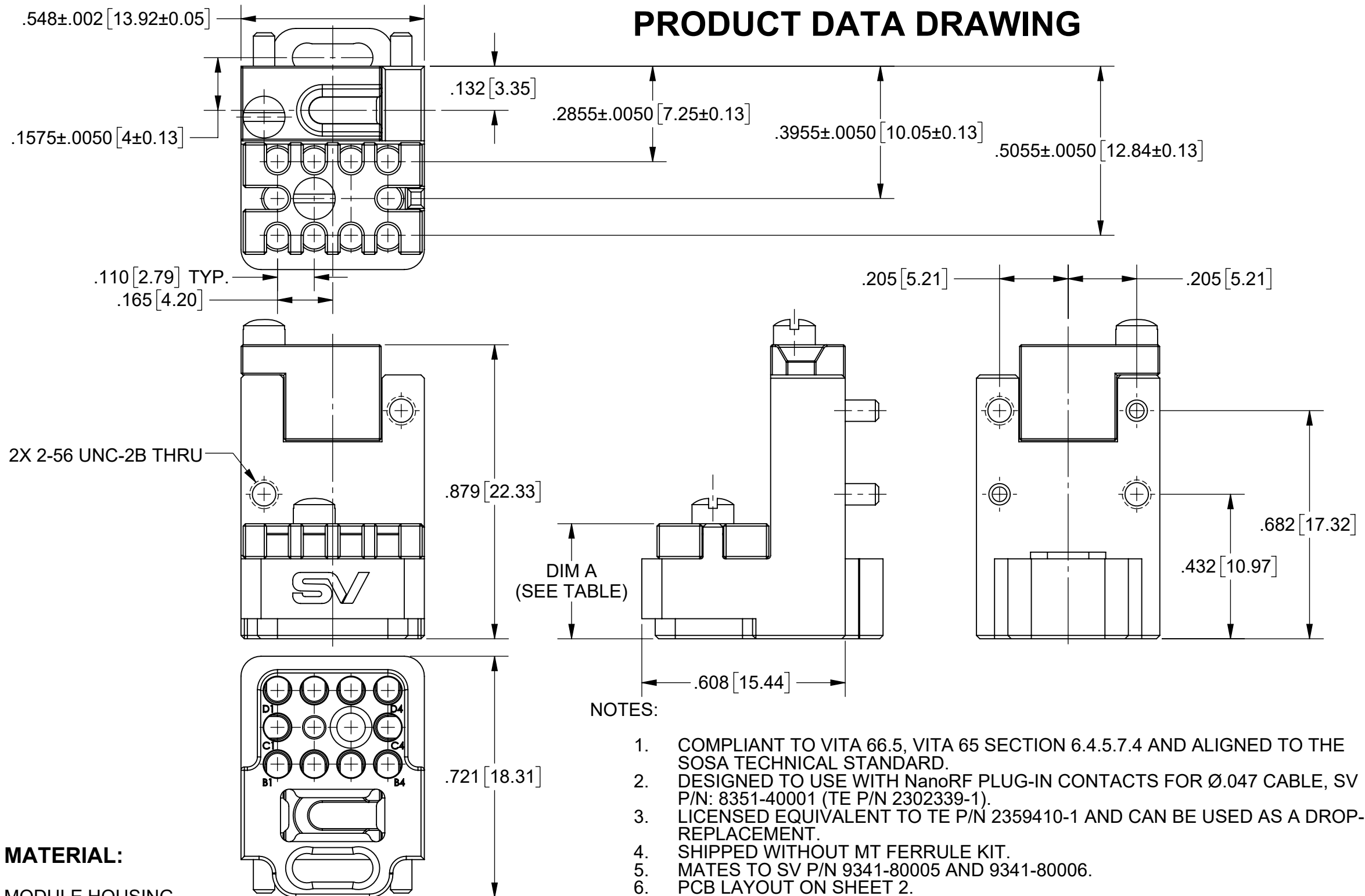


PRODUCT DATA DRAWING

REVISION HISTORY			
REV	DESCRIPTION	DATE	APPROVED
E	DCN 59684	05/26	SEE PDM



MATERIAL:
MODULE HOUSING, RF BACKPLATE, & MT BACKPLATE:
SCREWS:
FINISH:
MODULE HOUSING, RF BACKPLATE, & MT BACKPLATE:
SCREWS:

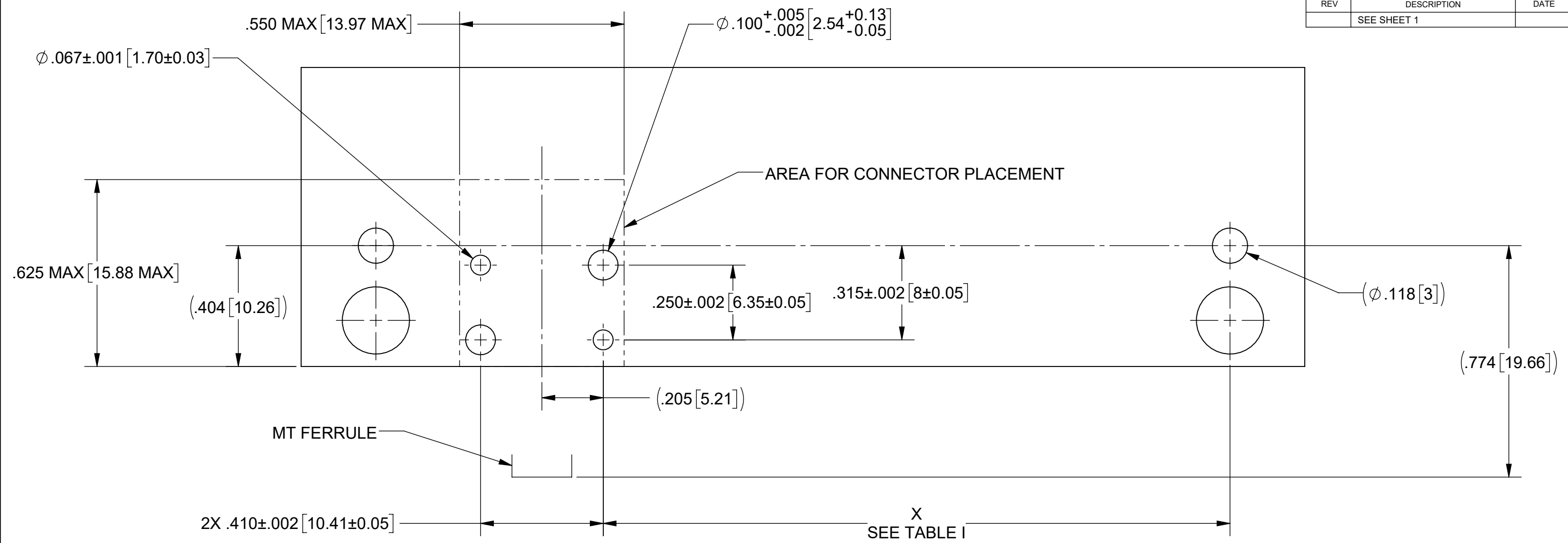
ALUMINUM PER ASTM B211 ALLOY 6061-T6 OR AMS-QQ-A-200/8 ALLOY 6061-T6
STAINLESS STEEL
CHEMICAL CONVERSION COATING PER MIL-DTL-5541, CLASS 3 COLOR CLEAR, TYPE II
PASSIVATED

- NOTES:**
1. COMPLIANT TO VITA 66.5, VITA 65 SECTION 6.4.5.7.4 AND ALIGNED TO THE SOSA TECHNICAL STANDARD.
 2. DESIGNED TO USE WITH NanoRF PLUG-IN CONTACTS FOR Ø.047 CABLE, SV P/N: 8351-40001 (TE P/N 2302339-1).
 3. LICENSED EQUIVALENT TO TE P/N 2359410-1 AND CAN BE USED AS A DROP-IN REPLACEMENT.
 4. SHIPPED WITHOUT MT FERRULE KIT.
 5. MATES TO SV P/N 9341-80005 AND 9341-80006.
 6. PCB LAYOUT ON SHEET 2.
 7. 9351-80004-1 COMES WITH AN EXTENDED RF BACKPLATE THAT IS THICKER THAN THE STANDARD. THIS PROVIDES ADDITIONAL PROTECTION OF THE EXPOSED CABLE SOLDER JOINT.
 8. DATE CODES 2623 AND LATER INCLUDE THREE SETS OF MOUNTING SCREWS, COVERING PCB THICKNESSES OF .063"-.102", .097"-.133", AND 160"-.196".


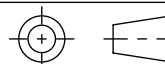
SV P/N	RF BACKPLATE	DIMENSION A
9351-80004	STANDARD	.344 [8.74]
9351-80004-1	EXTENDED	.500 [12.70]

MATERIAL: SEE NOTES	DIMENSIONS ARE IN INCHES TOLERANCES: FRACTIONAL: ±1/64 ANGULAR: X° ±1'0" X'X' ±15'	UNLESS OTHERWISE SPECIFIED 1) ALL DIMENSIONS ARE IN INCHES (MILLIMETERS) 2) ALL DIMENSIONS ARE AFTER PLATING. 3) BREAK CORNERS & EDGES .005 R. MAX. 4) CHAM. 1ST & LAST THREADS. 5) SURFACE ROUGHNESS 63-MIL-STD-10. 6) DIA: 'S ON COMMON CENTERS TO BE CONCENTRIC WITHIN .005 T.I.R. 7) REMOVE ALL BURRS	 www.svmicrowave.com TITLE: NANORF PLUG-IN MODULE, 2X 10 POS RF & FIBER OPTIC, FOR Ø.047 CABLE SIZE DWG. NO. B 9351-80004 SCALE: 3:1 SHEET 1 OF 2
FINISH: SEE NOTES	DECIMAL: X ±.030 .XX ±.010 .XXX ±.005		
SURFACE AREA: N/A	INTERPRET DIMENSIONS AND TOLERANCES PER ASME Y14.5M - 1994	DRAWN: JDT 4/1/24	
PROPRIETARY THE INFORMATION CONTAINED IN THIS DRAWING IS THE SOLE PROPERTY OF SV MICROWAVE, INC. ANY REPRODUCTION IN PART OR AS A WHOLE WITHOUT THE WRITTEN PERMISSION OF SV MICROWAVE, INC IS PROHIBITED.	THIRD ANGLE PROJECTION	CHECKED: SEE PDM	
		APPROVED: SEE PDM	

REVISION HISTORY			
REV	DESCRIPTION	DATE	APPROVED
	SEE SHEET 1		SEE PDM



POSITION	DIMENSION "X"		
	VITA 67.3-C	VITA 67.3-D	VITA 67.3-E
P1B	-	1.546	1.546
P2A	2.107	2.107	2.107
P2B	2.669	2.669	2.669
P3A	3.654	3.795	-
P3B	4.221	4.351	-
P4A	4.987	4.929	-
P4B	5.554	5.485	-
P5A	6.121	6.063	-
P5B	6.688	6.619	-
P6A	7.269	7.197	-
P6B	7.836	7.752	-

MATERIAL: SEE NOTES	DIMENSIONS ARE IN INCHES TOLERANCES: FRACTIONAL: ±1/64 ANGULAR: X° ±1'0" X°X' ±15'	UNLESS OTHERWISE SPECIFIED 1) ALL DIMENSIONS ARE IN INCHES (MILLIMETERS) 2) ALL DIMENSIONS ARE AFTER PLATING. 3) BREAK CORNERS & EDGES .005 R. MAX. 4) CHAM. 1ST & LAST THREADS. 5) SURFACE ROUGHNESS 63-MIL-STD-10. 6) DIA.'S ON COMMON CENTERS TO BE CONCENTRIC WITHIN .005 T.I.R. 7) REMOVE ALL BURRS	 www.svmicrowave.com TITLE: NANORF PLUG-IN MODULE, 2X 10 POS RF & FIBER OPTIC, FOR ∅.047 CABLE
FINISH: SEE NOTES	DECIMAL: X ±.030 .XX ±.010 .XXX ±.005	INTERPRET DIMENSIONS AND TOLERANCES PER ASME Y14.5M - 1994	
SURFACE AREA: N/A	THIRD ANGLE PROJECTION	DRAWN: SEE SHEET 1	SIZE DWG. NO. B 9351-80004
PROPRIETARY THE INFORMATION CONTAINED IN THIS DRAWING IS THE SOLE PROPERTY OF SV MICROWAVE, INC. ANY REPRODUCTION IN PART OR AS A WHOLE WITHOUT THE WRITTEN PERMISSION OF SV MICROWAVE, INC IS PROHIBITED.		CHECKED: SEE PDM	SCALE: 3:1
		APPROVED: SEE PDM	SHEET 2 OF 2