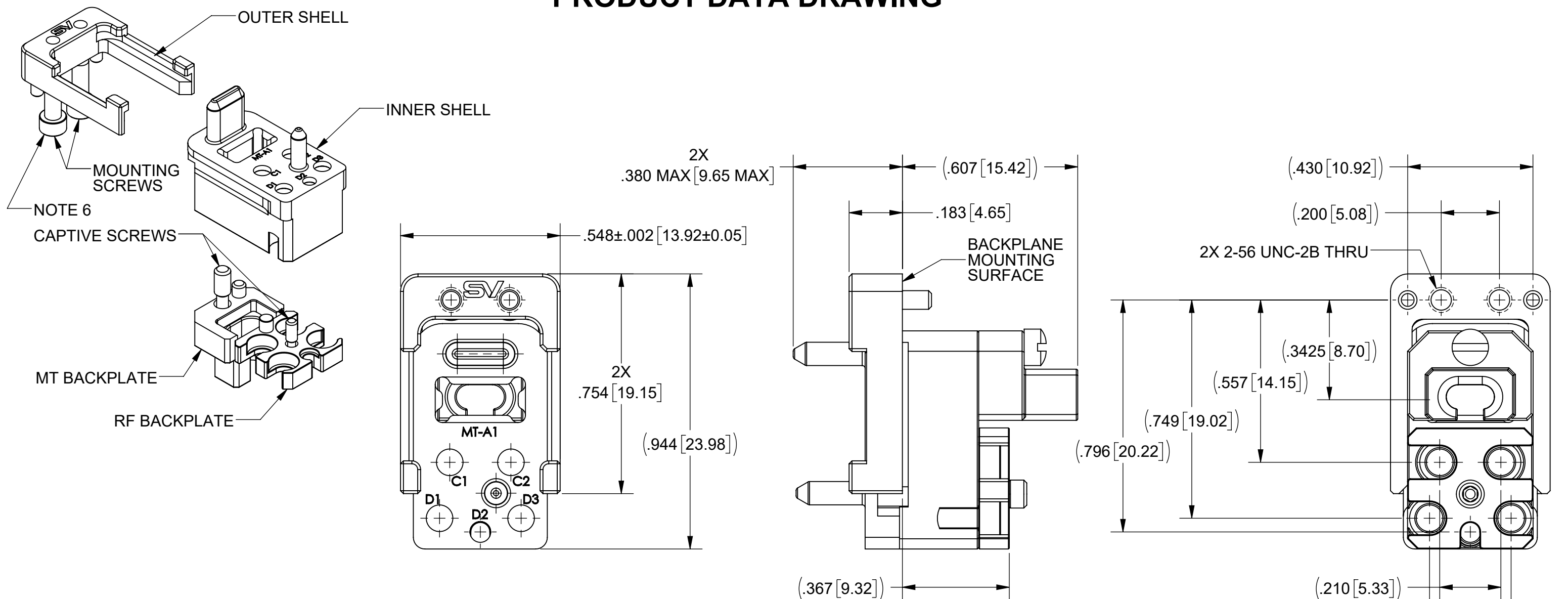


REVISION HISTORY			
REV	DESCRIPTION	DATE	APPROVED
B	DCN 59684	05/26	SEE PDM

PRODUCT DATA DRAWING



MATERIAL:

OUTER SHELL, INNER SHELL, RF BACKPLATE, & MT BACKPLATE: ALUMINUM PER ASTM B211 ALLOY 6061-T6 OR AMS-QQ-A-200/8 ALLOY 6061-T6

SCREWS: STAINLESS STEEL

FINISH:


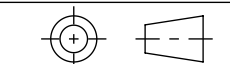
OUTER SHELL, INNER SHELL, RF BACKPLATE, & MT BACKPLATE: CHEMICAL CONVERSION COATING PER MIL-DTL-5541, CLASS 3 COLOR CLEAR, TYPE II

SCREWS: PASSIVATED

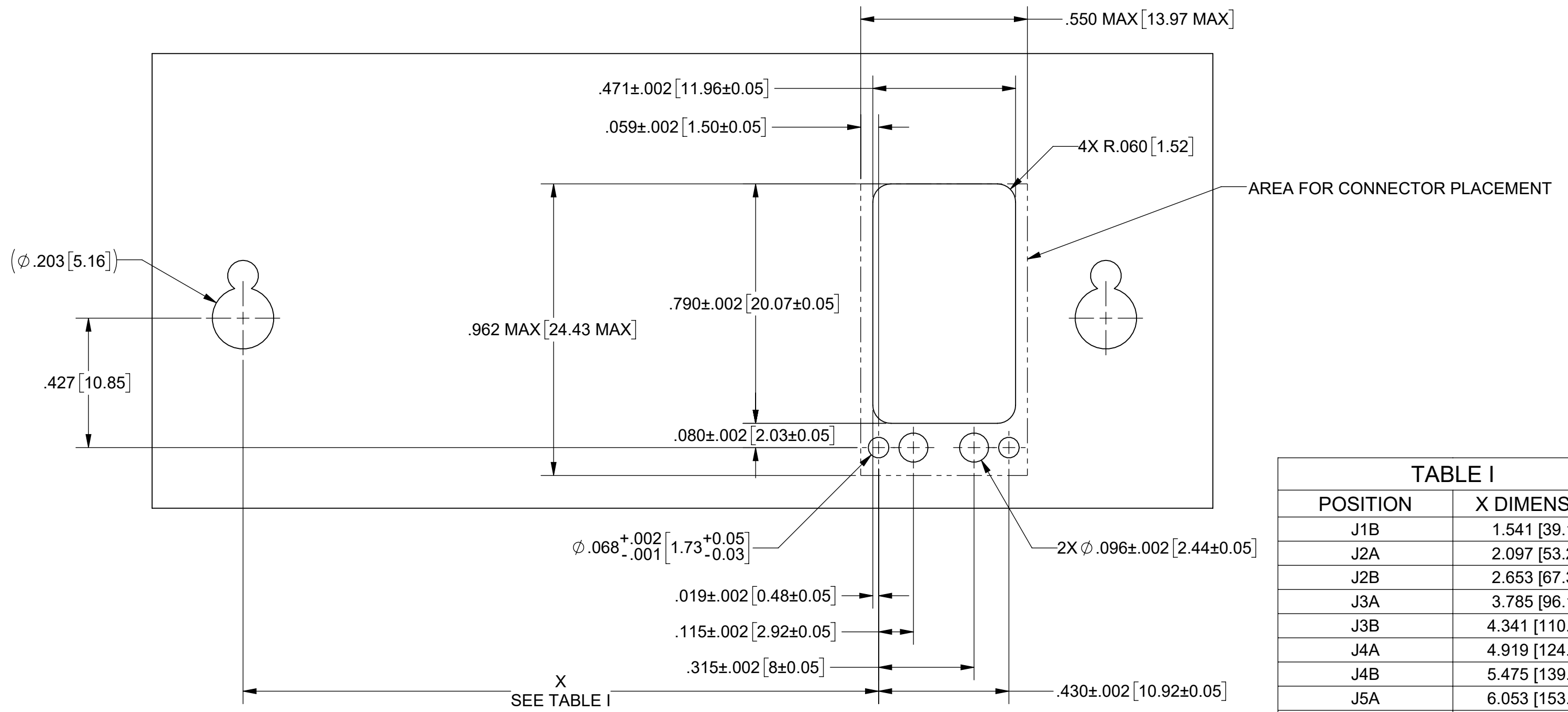
NOTES:

1. COMPLIANT TO VITA 66.5, VITA 65 SECTION 6.4.5.7.3, AND ALIGNED TO THE SOSA TECHNICAL STANDARD.
2. LICENSED EQUIVALENT TO TE P/N 2358431-1 AND CAN BE USED AS A DROP-IN REPLACEMENT.
3. SHIPPED WITHOUT MT FERRULE KIT.
4. MATES TO SV P/N 9351-80007.
5. PCB LAYOUT ON SHEET 2.
6. DATE CODES 2623 AND LATER INCLUDE THREE SETS OF MOUNTING SCREWS, COVERING PCB THICKNESSES OF .063"-.102", .097"-.133", AND 160"-.196".


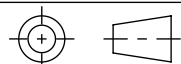
POS	CABLE
MT-A1	-
C1, C2, D1, D3	Ø .085
D2	Ø .047

MATERIAL: SEE NOTES	DIMENSIONS ARE IN INCHES TOLERANCES: FRACTIONAL: ±1/64 ANGULAR: X° ±1°0' X'X' ±15'	UNLESS OTHERWISE SPECIFIED 1) ALL DIMENSIONS ARE IN INCHES (MILLIMETERS) 2) ALL DIMENSIONS ARE AFTER PLATING. 3) BREAK CORNERS & EDGES .005 R. MAX. 4) CHAM. 1ST & LAST THREADS. 5) SURFACE ROUGHNESS 63-MIL-STD-10. 6) DIA: 'S ON COMMON CENTERS TO BE CONCENTRIC WITHIN .005 T.I.R. 7) REMOVE ALL BURRS	 www.svmicrowave.com TITLE: NanoRF BACKPLANE MODULE, 4 POS RF FOR Ø.085, 1 POS RF FOR Ø.047 CABLE & 1 POS FIBER OPTIC
FINISH: SEE NOTES	DECIMAL: X ±.030 .XX ±.010 .XXX ±.005	INTERPRET DIMENSIONS AND TOLERANCES PER ASME Y14.5M - 1994	
SURFACE AREA: N/A	THIRD ANGLE PROJECTION	DRAWN: KRR 04/11/25	SIZE DWG. NO. B 9341-80011
PROPRIETARY THE INFORMATION CONTAINED IN THIS DRAWING IS THE SOLE PROPERTY OF SV MICROWAVE, INC. ANY REPRODUCTION IN PART OR AS A WHOLE WITHOUT THE WRITTEN PERMISSION OF SV MICROWAVE, INC IS PROHIBITED.		CHECKED: SEE PDM	SCALE: 3:1
		APPROVED: SEE PDM	SHEET 1 OF 2

REVISION HISTORY			
REV	DESCRIPTION	DATE	APPROVED
	SEE SHEET 1		SEE PDM



POSITION	X DIMENSION
J1B	1.541 [39.15]
J2A	2.097 [53.27]
J2B	2.653 [67.39]
J3A	3.785 [96.14]
J3B	4.341 [110.26]
J4A	4.919 [124.94]
J4B	5.475 [139.06]
J5A	6.053 [153.74]
J5B	6.609 [167.86]
J6A	7.187 [182.54]
J6B	7.743 [196.66]

MATERIAL: SEE NOTES	DIMENSIONS ARE IN INCHES TOLERANCES: FRACTIONAL: ±1/64 ANGULAR: X° ±1'0" X'X' ±15'	UNLESS OTHERWISE SPECIFIED 1) ALL DIMENSIONS ARE IN INCHES (MILLIMETERS) 2) ALL DIMENSIONS ARE AFTER PLATING. 3) BREAK CORNERS & EDGES .005 R. MAX. 4) CHAM. 1ST & LAST THREADS. 5) SURFACE ROUGHNESS 63-MIL-STD-10. 6) DIA.'S ON COMMON CENTERS TO BE CONCENTRIC WITHIN .005 T.I.R. 7) REMOVE ALL BURRS	 www.svmicrowave.com TITLE: NanoRF BACKPLANE MODULE, 4 POS RF FOR Ø.085, 1 POS RF FOR Ø.047 CABLE & 1 POS FIBER OPTIC
FINISH: SEE NOTES	DECIMAL: X ±.030 .XX ±.010 .XXX ±.005	INTERPRET DIMENSIONS AND TOLERANCES PER ASME Y14.5M - 1994	
SURFACE AREA: N/A	THIRD ANGLE PROJECTION	DRAWN: SEE SHEET 1	SIZE DWG. NO. B 9341-80011
PROPRIETARY THE INFORMATION CONTAINED IN THIS DRAWING IS THE SOLE PROPERTY OF SV MICROWAVE, INC. ANY REPRODUCTION IN PART OR AS A WHOLE WITHOUT THE WRITTEN PERMISSION OF SV MICROWAVE, INC IS PROHIBITED.		CHECKED: SEE PDM	SCALE: 3:1
		APPROVED: SEE PDM	SHEET 2 OF 2