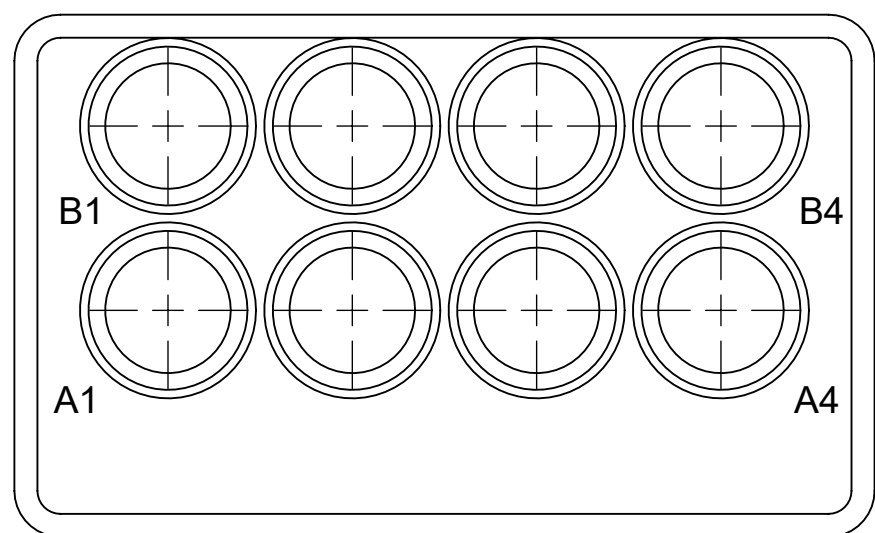
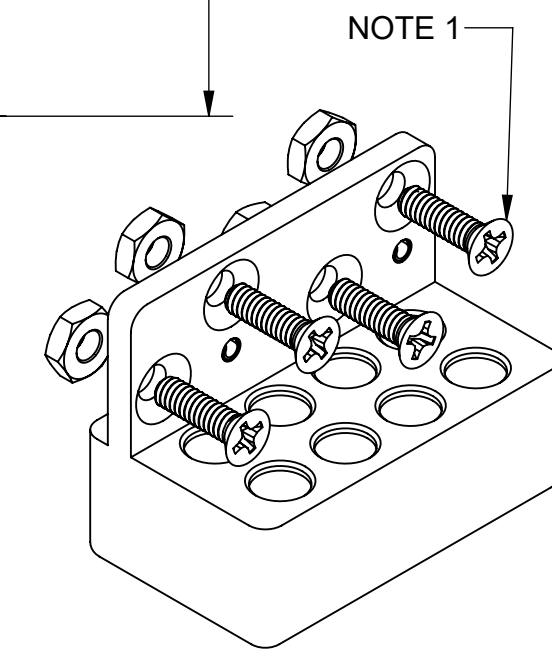
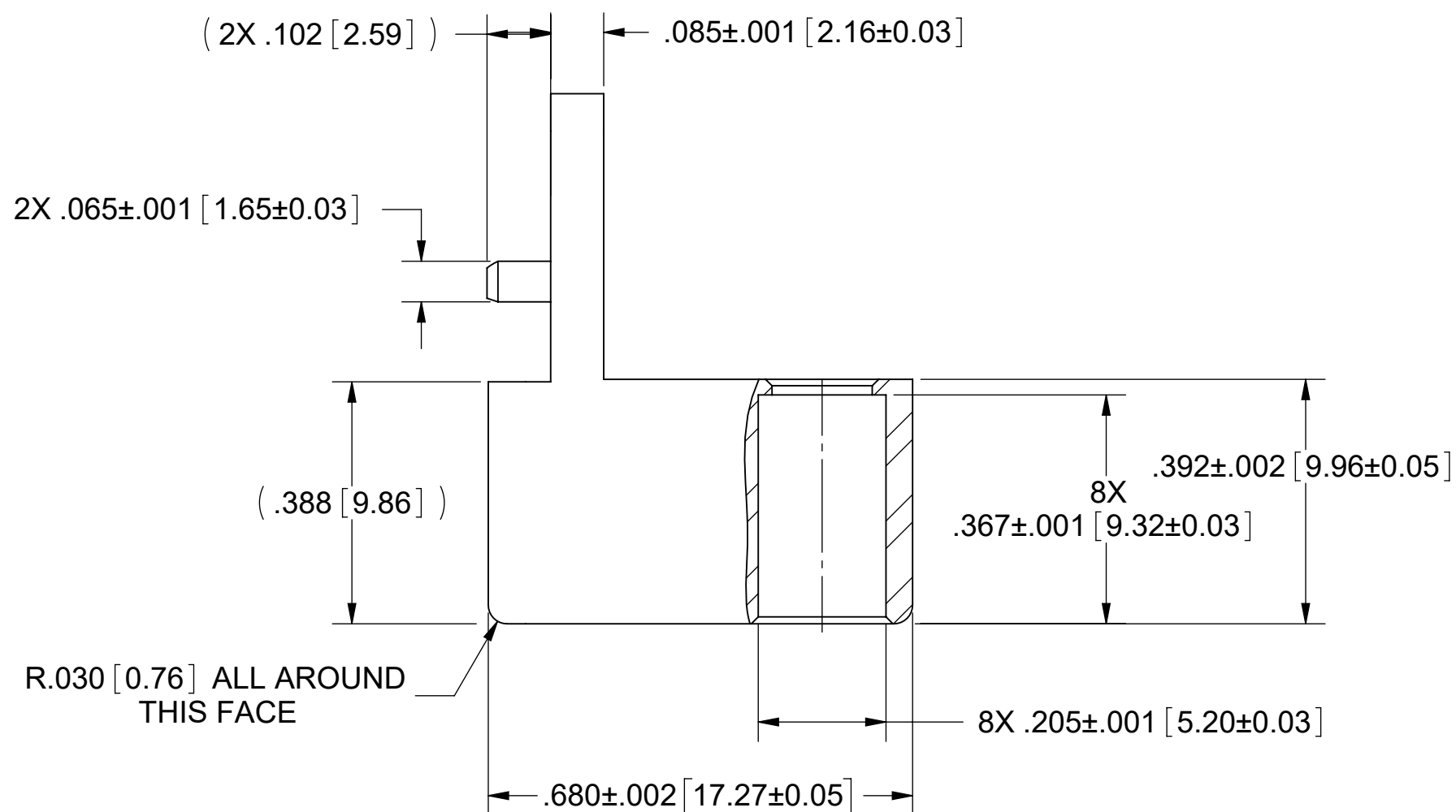
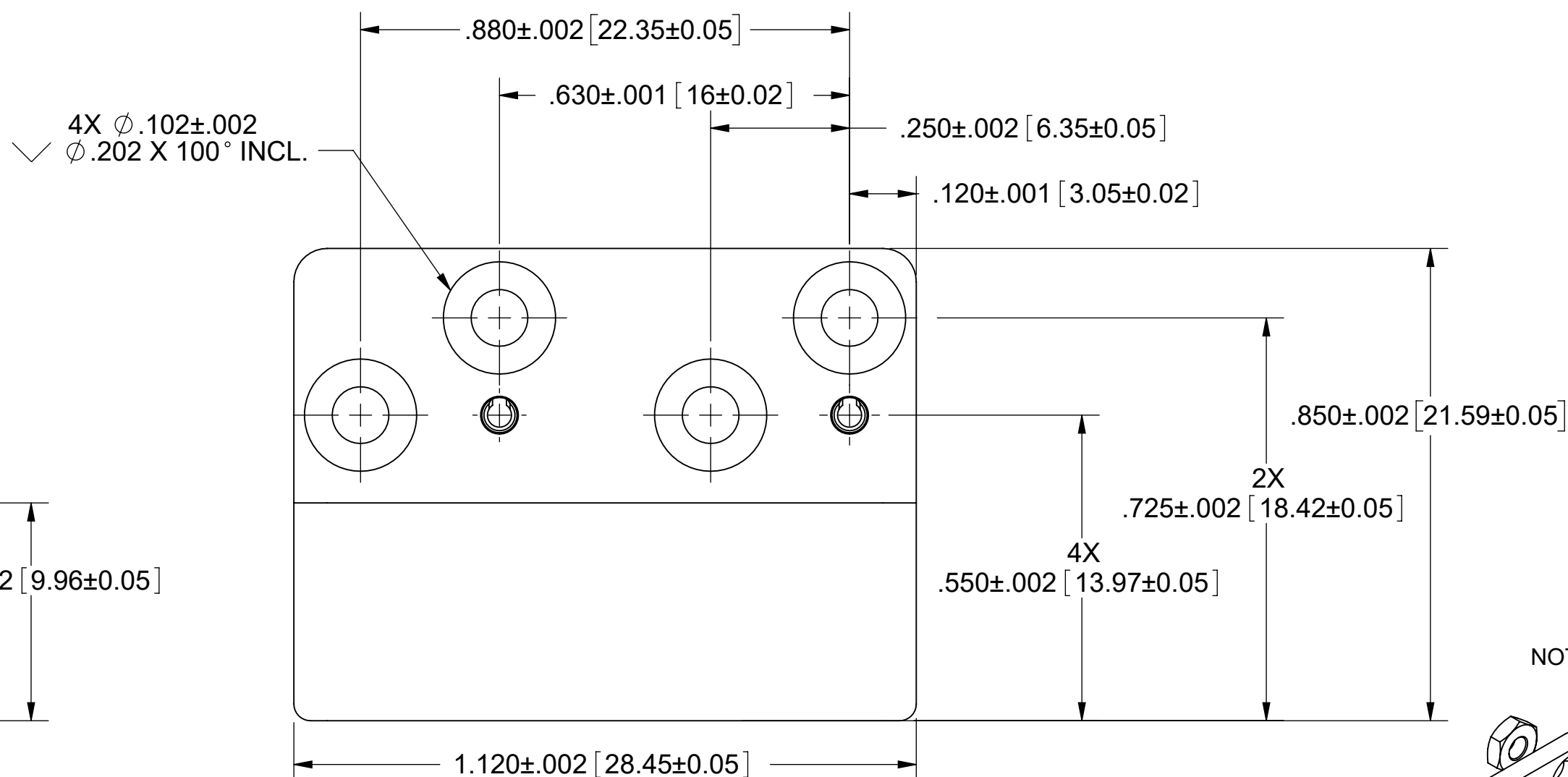
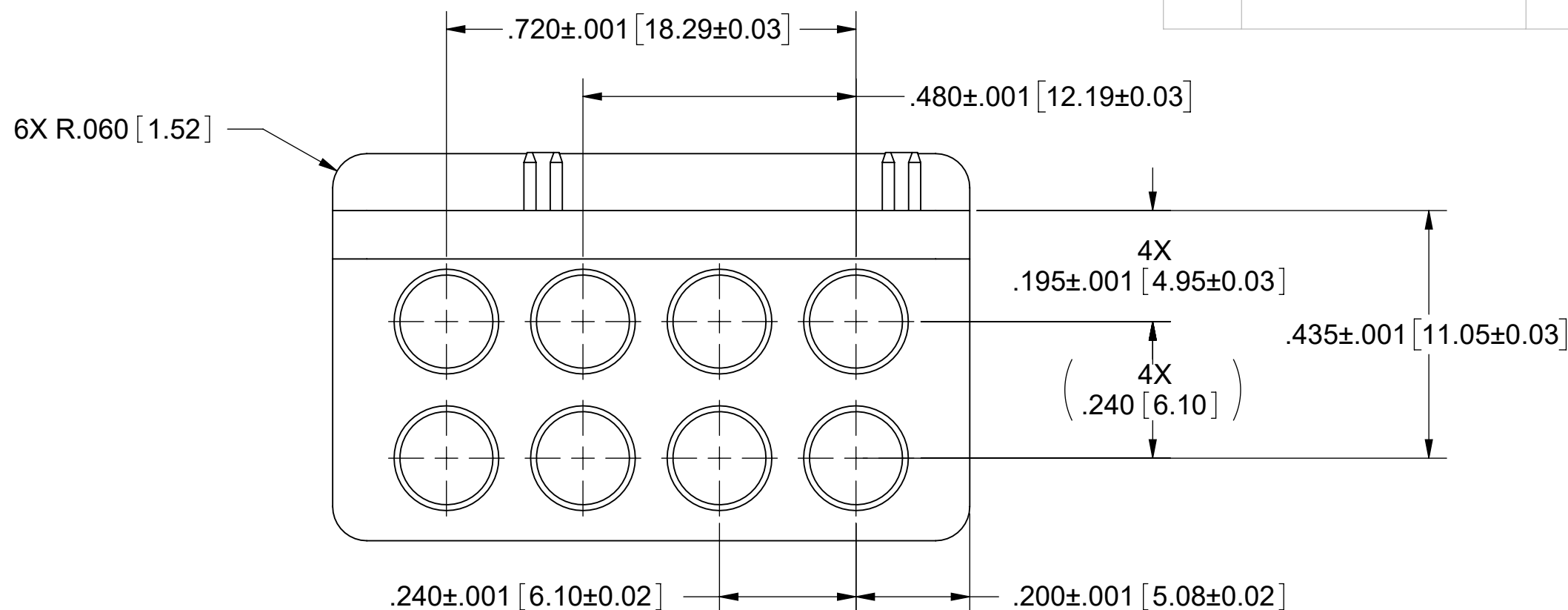


PRODUCT DATA DRAWING

REVISION HISTORY			
REV.	DESCRIPTION	DATE	APPROVED
G	DCN 59684	05/26	SEE PDM



CAVITY IDENTIFICATION



NOTES:
 1. DATE CODES 2623 AND LATER INCLUDE THREE SETS OF MOUNTING SCREWS, COVERING PCB THICKNESSES OF .063"-.102", .097"-.133", AND 160"-.196".

MATERIAL:
MODULE: STAINLESS STEEL PER AMS 5640, ALLOY UNS S30300, TYPE 1 OR ASTM A582, TYPE 303, CONDITION A.
SPRING PINS: STAINLESS STEEL PER AMS 5506, UNS ALLOY No. S42000.
SCREWS & HEX NUTS: 18-8 STAINLESS STEEL
FINISH:
MODULE & SPRING PINS: PASSIVATED PER AMS 2700.
SCREWS & HEX NUTS: PASSIVATED

MATERIAL: SEE NOTES
FINISH: SEE NOTES

DO NOT SCALE DRAWING

PROPRIETARY

THE INFORMATION CONTAINED IN THIS DRAWING IS THE SOLE PROPERTY OF SV MICROWAVE, INC. ANY REPRODUCTION IN PART OR AS A WHOLE WITHOUT THE WRITTEN PERMISSION OF SV MICROWAVE, INC. IS PROHIBITED.

DIMENSIONS ARE IN INCHES
 TOLERANCES:
 ANGULAR: ±1°
 ONE PLACE DECIMAL ±.030
 TWO PLACE DECIMAL ±.010
 THREE PLACE DECIMAL ±.005
 INTERPRET DIMENSIONS AND TOLERANCES PER ASME Y14.5M - 1994

THIRD ANGLE PROJECTION



UNLESS OTHERWISE SPECIFIED:

- ALL DIMENSIONS ARE AFTER PLATING.
- BREAK CORNERS & EDGES R.005 MAX.
- CHAMFER 1ST AND LAST THREAD.
- SURFACE ROUGHNESS 63 PER MIL-STD-10.
- DIA'S ON COMMON CENTERS TO BE CONCENTRIC WITHIN .005 T.I.R.
- REMOVE ALL BURRS.

DRAWN: JMC 12/13/10
CHECKED: SEE PDM
APPROVED: SEE PDM
E.M. SIMULATION: N/A



TITLE:
MULTIPOINT BLOCK 8 POS

SIZE C DWG. NO. SF9321-60013
 SCALE: 4:1 SHEET 1 OF 1