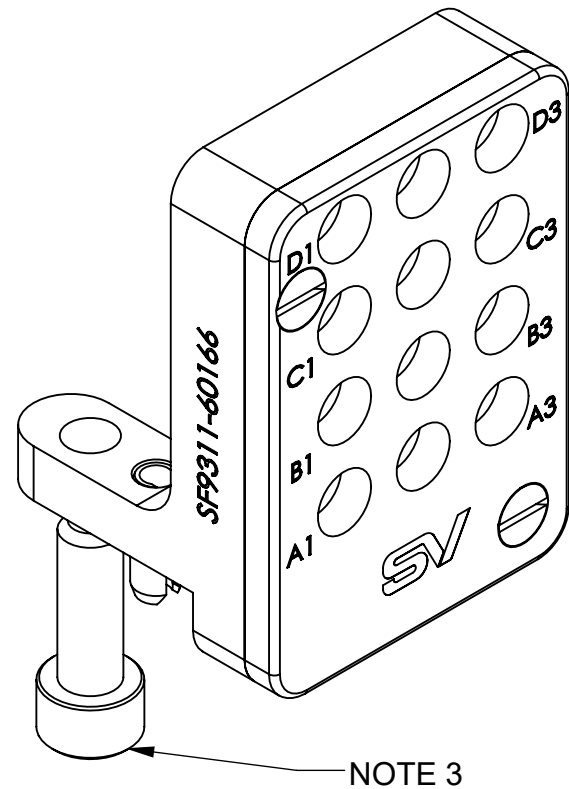


PRODUCT DATA DRAWING

REVISION HISTORY			
REV	DESCRIPTION	DATE	APPROVED
E	DCN 59684	05/26	SEE PDM



NOTE 3

NOTES:

- DESIGNED FOR USE WITH SF9321-60084.
- THIS SMPS GEN1 MODULE IS NO LONGER RECOMMENDED FOR NEW DESIGNS. THIS MODULE IS NOT COMPATIBLE WITH NEW SMPS GEN2 CONTACTS. THIS MODULE IS DESIGNED FOR SF3811-60059, SF3811-60060, AND SF1138-6020. SMPS GEN 1 MODULES WILL MATE TO EITHER GEN1 OR GEN2 POPULATED BACKPLANE ASSEMBLIES. CONTACT US AT APPLICATIONS@SVMICRO.COM FOR A MORE INFORMATION.
- DATE CODES 2623 AND LATER INCLUDE THREE SETS OF MOUNTING CREWS, COVERING PCB THICKNESSES OF .063"-.102", .097"-.133", AND 160"-.196".

MATERIAL:

BODIES: STAINLESS STEEL PER AMS-5640, ALLOY UNS S30300, TYPE 1; OR ASTM A582 TYPE 303, COND. A

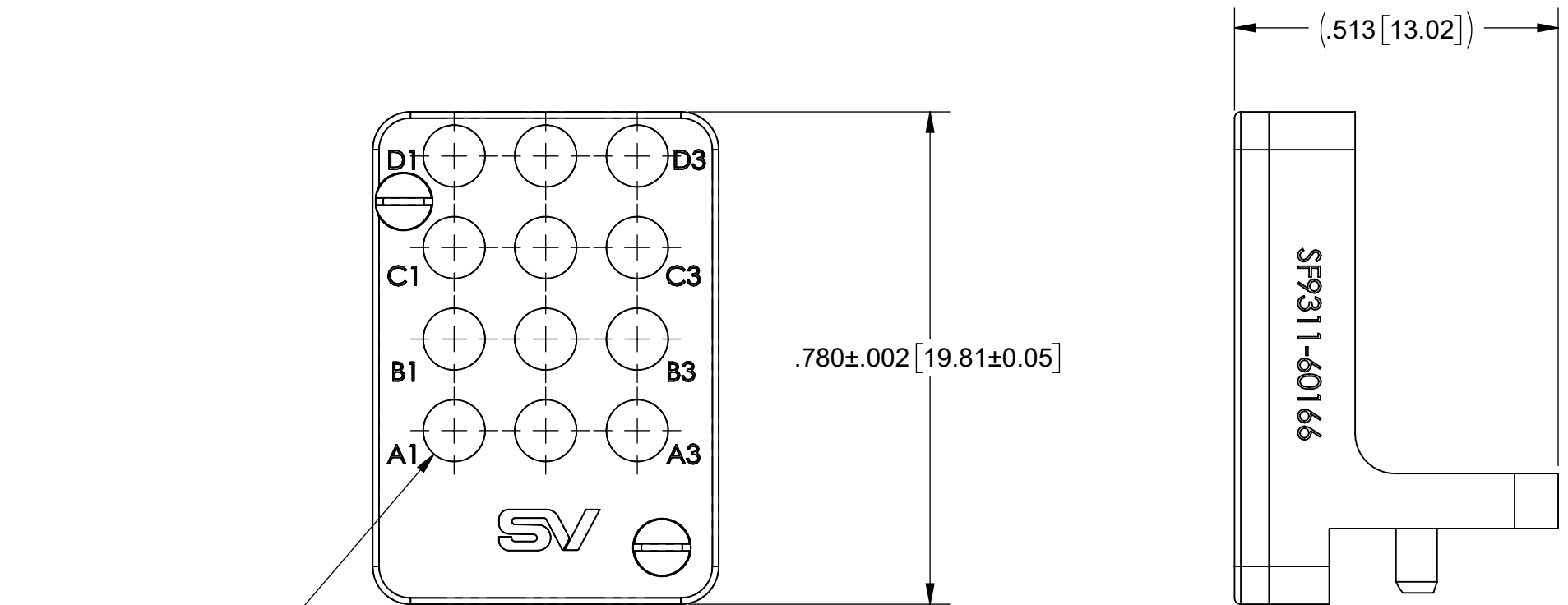
SPRING PINS: 420 STAINLESS STEEL

SCREWS: 18-8 STAINLESS STEEL

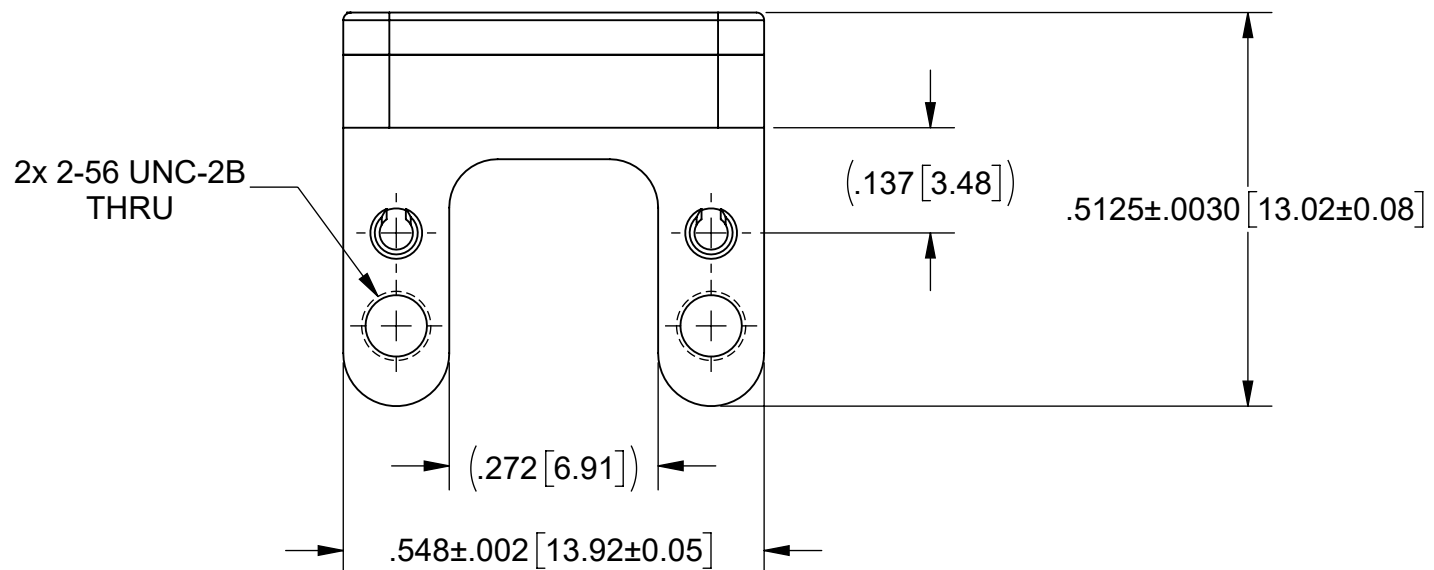
FINISH:

BODIES: PASSIVATED PER AMS-2700

SCREWS: PASSIVATED

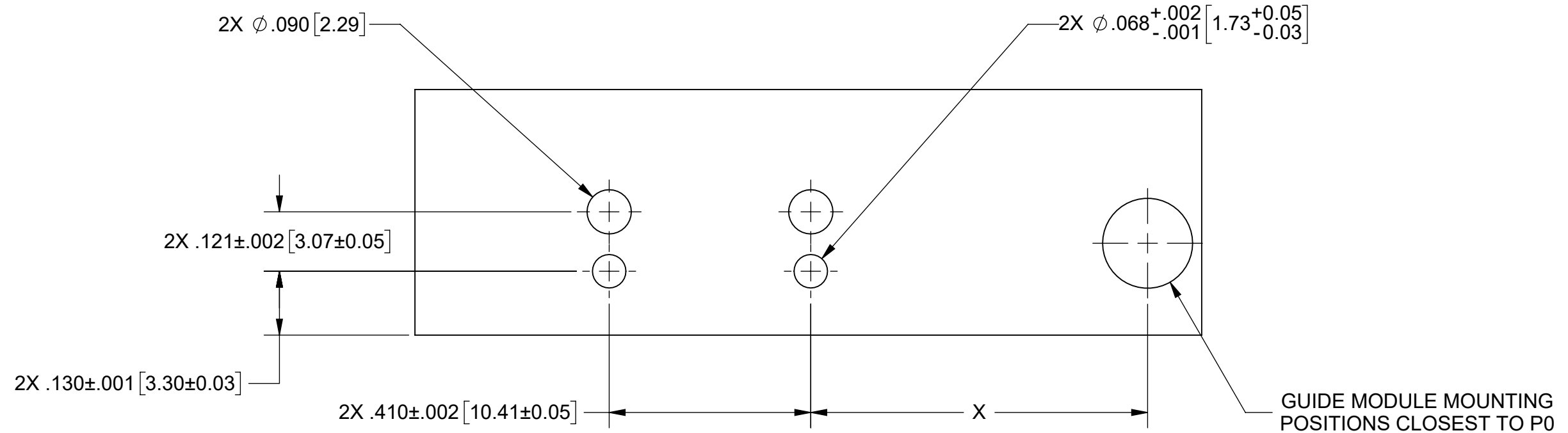


(12X ϕ .098 [2.49])




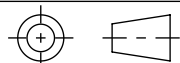
MATERIAL: SEE NOTES	DIMENSIONS ARE IN INCHES TOLERANCES: FRACTIONAL: $\pm 1/64$ ANGULAR: X° $\pm 1'0''$ X'X' $\pm 15'$	UNLESS OTHERWISE SPECIFIED 1) ALL DIMENSIONS ARE IN INCHES (MILLIMETERS) 2) ALL DIMENSIONS ARE AFTER PLATING. 3) BREAK CORNERS & EDGES .005 R. MAX. 4) CHAM. 1ST & LAST THREADS. 5) SURFACE ROUGHNESS 63-MIL-STD-10. 6) DIA: 'S ON COMMON CENTERS TO BE CONCENTRIC WITHIN .005 T.I.R. 7) REMOVE ALL BURRS	 www.svmicrowave.com TITLE: VITA 67.3 PLUG-IN MODULE D, 12 PORT, SMPS
FINISH: SEE NOTES	DECIMAL: X $\pm .030$.XX $\pm .010$.XXX $\pm .005$	INTERPRET DIMENSIONS AND TOLERANCES PER ASME Y14.5M - 1994	
SURFACE AREA: N/A	THIRD ANGLE PROJECTION	DRAWN: SJ 04/02/19	SIZE DWG. NO. SF9311-60166
<p>PROPRIETARY</p> <p>THE INFORMATION CONTAINED IN THIS DRAWING IS THE SOLE PROPERTY OF SV MICROWAVE, INC. ANY REPRODUCTION IN PART OR AS A WHOLE WITHOUT THE WRITTEN PERMISSION OF SV MICROWAVE, INC IS PROHIBITED.</p>		CHECKED: SEE PDM	SCALE: 4:1
		APPROVED: SEE PDM	SHEET 1 OF 2

REVISION HISTORY			
REV	DESCRIPTION	DATE	APPROVED
	SEE SHEET 1		SEE PDM



RECOMMENDED PCB CUTOUT

CONNECTOR LOCATION ON DAUGHTER CARD PCB	
POSITION	DIM 'X'
P2A	2.107" [53.52]
P2B	2.663" [67.64]
P3A	3.795" [96.39]
P3B	4.351" [110.52]
P4A	4.929" [125.20]
P4B	5.485" [139.32]
P5A	6.063" [154.00]
P5B	6.619" [168.12]
P6A	7.197" [182.80]
P6B	7.753" [196.93]

MATERIAL: SEE NOTES	DIMENSIONS ARE IN INCHES TOLERANCES: FRACTIONAL: ±1/64 ANGULAR: X° ±1'0" X'X' ±15'	UNLESS OTHERWISE SPECIFIED 1) ALL DIMENSIONS ARE IN INCHES (MILLIMETERS) 2) ALL DIMENSIONS ARE AFTER PLATING. 3) BREAK CORNERS & EDGES .005 R. MAX. 4) CHAM. 1ST & LAST THREADS. 5) SURFACE ROUGHNESS 63-MIL-STD-10. 6) DIA: 'S ON COMMON CENTERS TO BE CONCENTRIC WITHIN .004 T.I.R. 7) REMOVE ALL BURRS	 www.svmicrowave.com TITLE: VITA 67.3 PLUG-IN MODULE D, 12 PORT, SMPS
FINISH: SEE NOTES	DECIMAL: X ±.030 .XX ±.010 .XXX ±.005	INTERPRET DIMENSIONS AND TOLERANCES PER ASME Y14.5M - 1994	
SURFACE AREA: N/A	THIRD ANGLE PROJECTION	DRAWN: SEE SHEET 1	SIZE DWG. NO. B SF9311-60166
PROPRIETARY THE INFORMATION CONTAINED IN THIS DRAWING IS THE SOLE PROPERTY OF SV MICROWAVE, INC. ANY REPRODUCTION IN PART OR AS A WHOLE WITHOUT THE WRITTEN PERMISSION OF SV MICROWAVE, INC IS PROHIBITED.		CHECKED: SEE PDM	SCALE: 4:1
		APPROVED: SEE PDM	SHEET 2 OF 2