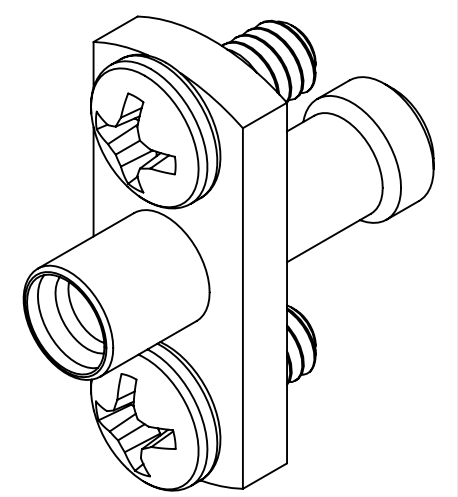
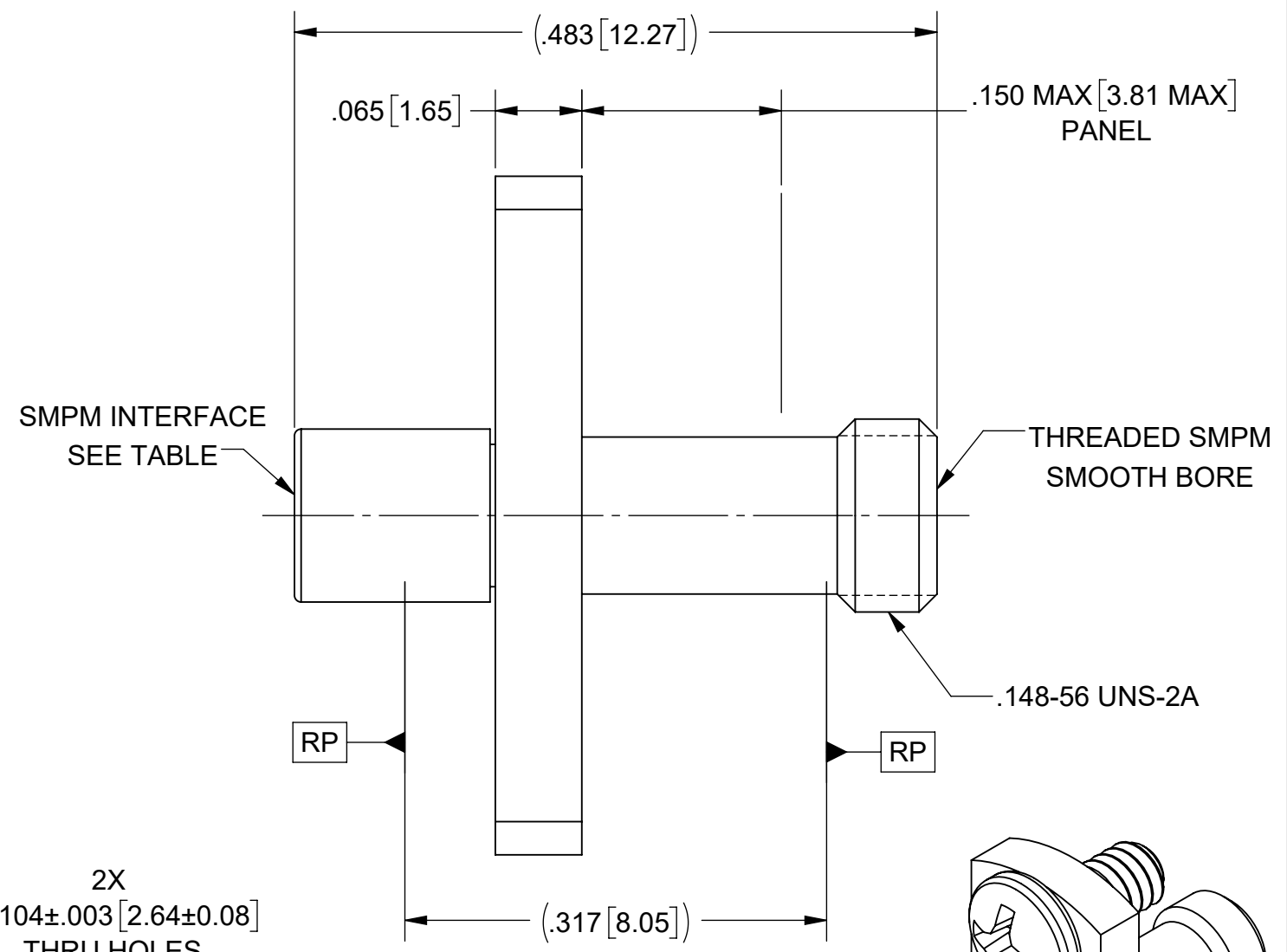
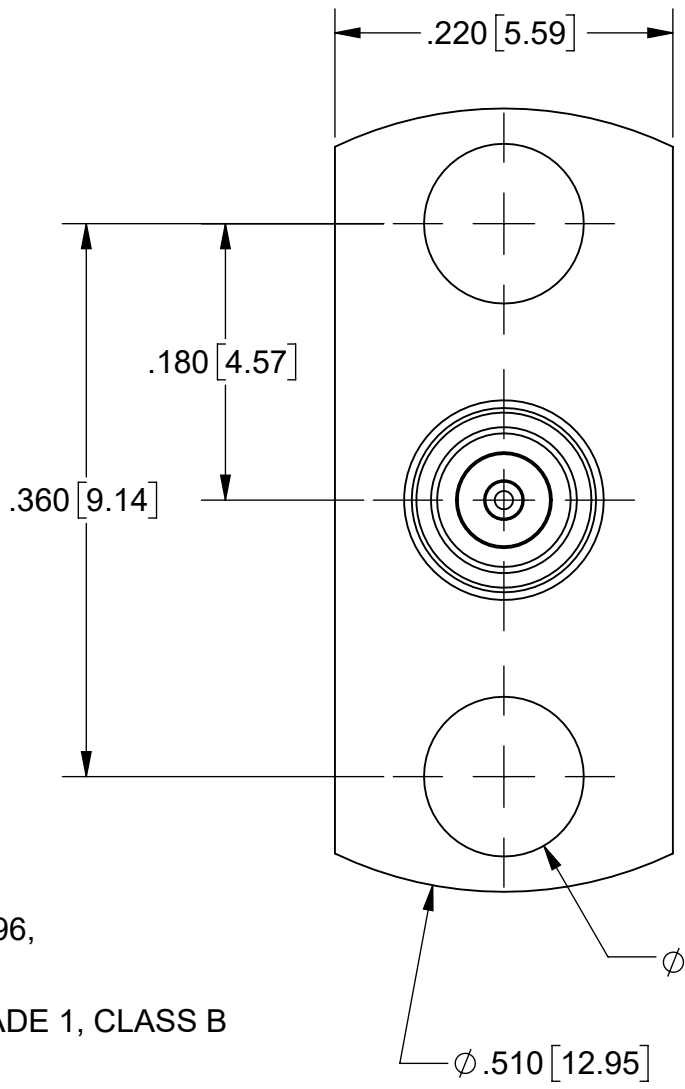
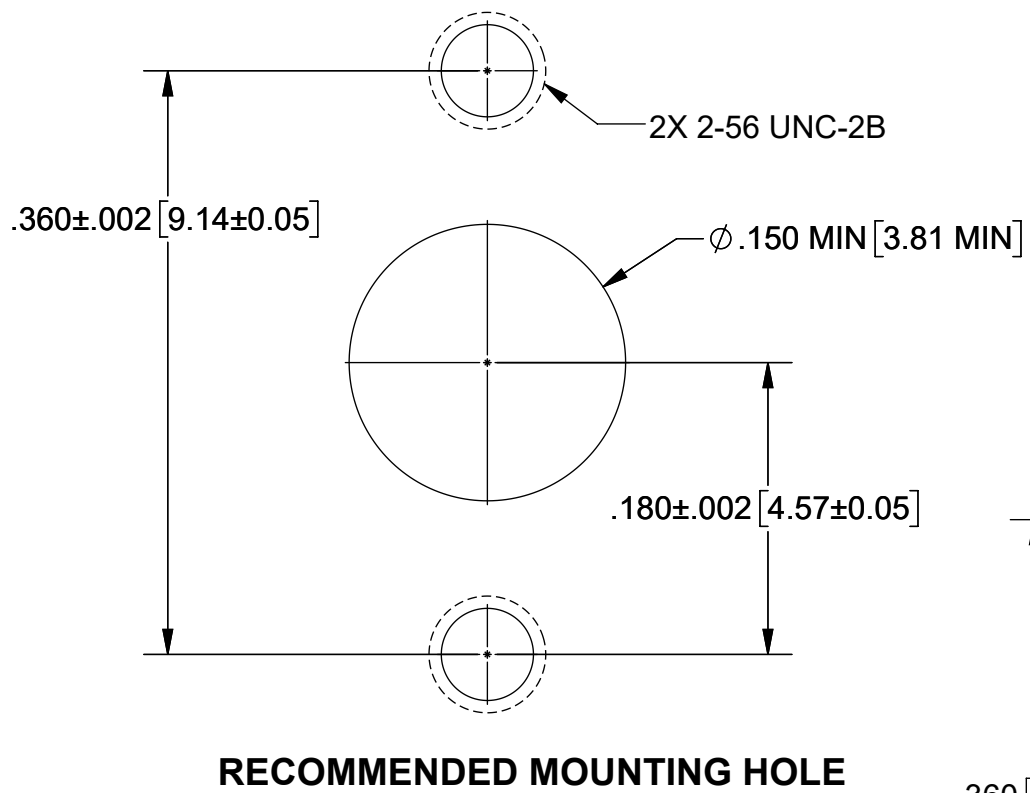


PRODUCT DATA DRAWING

REVISION HISTORY			
REV	DESCRIPTION	DATE	APPROVED
-	NRN 49966	04/26	SEE PDM



MATERIAL:

BODIES: STAINLESS STEEL PER AMS-5640, ALLOY UNS S30300, TYPE 1; OR ASTM A582 TYPE 303, COND. A

CONTACT: BERYLLIUM COPPER PER ASTM B196, ALLOY No. UNS C17300, TD04

INSULATORS: PTFE PER ASTM D1710, TYPE I, GRADE 1, CLASS B

SCREWS: 18-8 STAINLESS STEEL

FINISH:

BODIES: PASSIVATED PER AMS-2700

SCREWS: PASSIVATED

CONTACT: GOLD PER ASTM B488, TYPE II, CODE C, CLASS 1.27, OVER NICKEL PER AMS-QQ-N-290, CLASS 1, .00005" MIN.

PERFORMANCE:

IMPEDANCE: 50 OHMS

FREQ. RANGE: DC TO 65.0 GHz

SV P/N	INTERFACE
1132-6163	FD
1132-6164	SB

MATERIAL: SEE NOTES

FINISH: SEE NOTES

SURFACE AREA: N/A

PROPRIETARY

THE INFORMATION CONTAINED IN THIS DRAWING IS THE SOLE PROPERTY OF SV MICROWAVE, INC. ANY REPRODUCTION IN PART OR AS A WHOLE WITHOUT THE WRITTEN PERMISSION OF SV MICROWAVE, INC IS PROHIBITED.

DIMENSIONS ARE IN INCHES TOLERANCES:

FRACTIONAL: $\pm 1/64$ ANGULAR: X° $\pm 1'0"$
X'X' $\pm 15'$

DECIMAL: X $\pm .030$
.XX $\pm .010$
.XXX $\pm .005$

INTERPRET DIMENSIONS AND TOLERANCES PER ASME Y14.5M - 1994

THIRD ANGLE PROJECTION

UNLESS OTHERWISE SPECIFIED

- 1) ALL DIMENSIONS ARE IN INCHES (MILLIMETERS)
- 2) ALL DIMENSIONS ARE AFTER PLATING.
- 3) BREAK CORNERS & EDGES .005 R. MAX.
- 4) CHAM. 1ST & LAST THREADS.
- 5) SURFACE ROUGHNESS 63-MIL-STD-10.
- 6) DIA: 'S ON COMMON CENTERS TO BE CONCENTRIC WITHIN .005 T.I.R.
- 7) REMOVE ALL BURRS

DRAWN: SJ 04/20/26

CHECKED: SEE PDM

APPROVED: SEE PDM

SV MICROWAVE Amphenol
www.svmicrowave.com

TITLE: THREADED SMPM MALE SB TO STD. SMPM MALE STRAIGHT ADAPTER

SIZE DWG. NO. **B** 1132-6163-6164

SCALE: 8:1

SHEET 1 OF 1