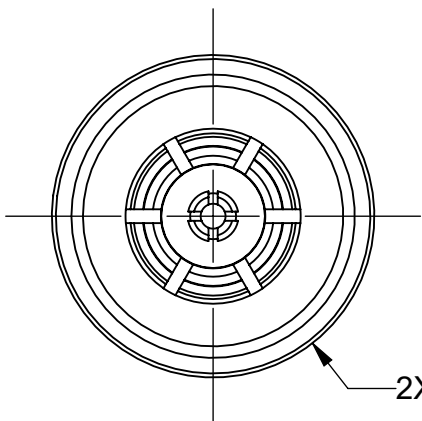
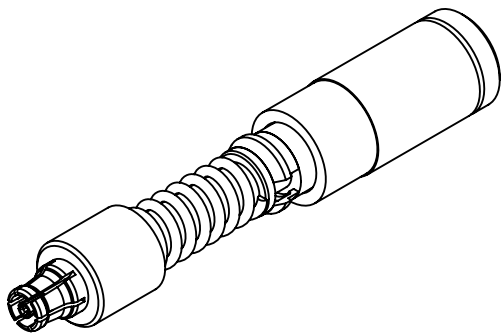
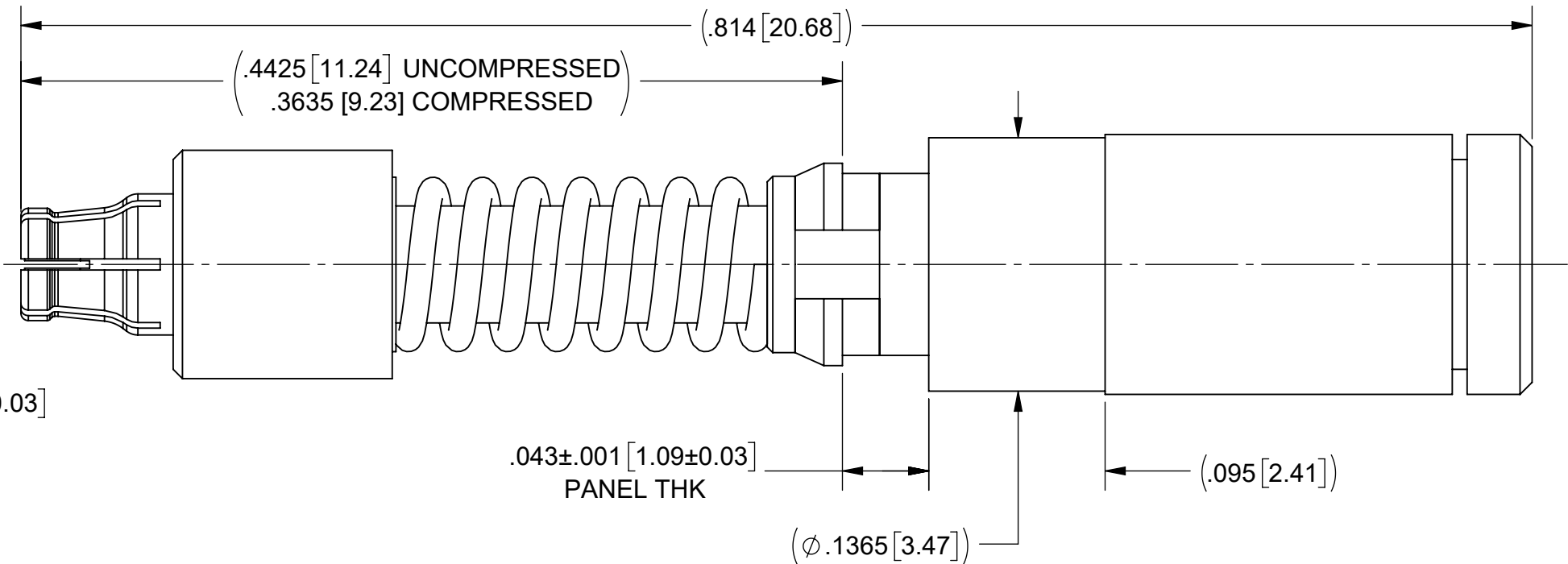


PRODUCT DATA DRAWING

REVISION HISTORY			
REV	DESCRIPTION	DATE	APPROVED
B	DCN 58883	01/26	SEE PDM



2X ϕ .140 \pm .001 [3.56 \pm 0.03]



MATERIAL:

MAIN BODY, CAP,
SLEEVE,
& WASHER:

STAINLESS STEEL PER AMS-5640,
ALLOY UNS S30300, TYPE 1;
OR ASTM A582 TYPE 303, COND. A

FEMALE BODY,
INSERT, CARRIER &
CONTACT:

BERYLLIUM COPPER PER ASTM B196,
ALLOY No. UNS C17300, TD04

SPRING :

MUSIC WIRE

FINISH:

MAIN BODY,
WASHER, SLEEVE,
& CAP:

PASSIVATED PER AMS-2700

FEMALE BODIES,
INSERT, CARRIER,
& CONTACT:

GOLD PER ASTM B488, TYPE II,
CODE C, CLASS 1.27, OVER NICKEL
PER AMS-QQ-N-290, CLASS 1, .00005" MIN.

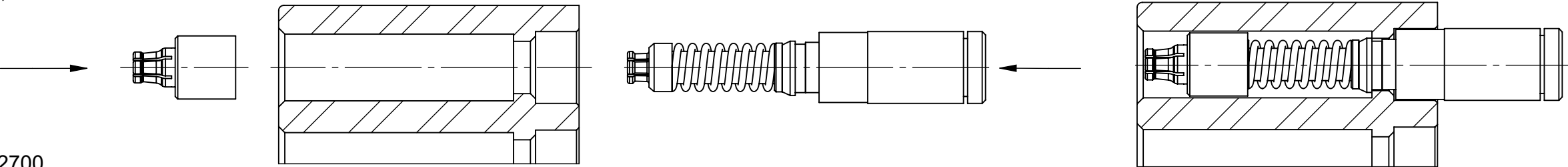
RETAINING RING:


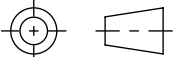
NICKEL PER AMS-QQ-N-290, CLASS 1,
GRADE G

PERFORMANCE:

IMPEDANCE: 50 OHMS
FREQ. RANGE: DC TO 40.0 GHz

FOR USE IN VITA 67.3 BACKPLANE MODULE
REMOVAL TOOL P/Ns 500-38-004 & 500-38-006



MATERIAL:	SEE NOTES	DIMENSIONS ARE IN INCHES TOLERANCES:	UNLESS OTHERWISE SPECIFIED	 www.svmicrowave.com	
FINISH:	SEE NOTES	FRACTIONAL: \pm 1/64 ANGULAR: X° \pm 1°0' X°X' \pm 15'	1) ALL DIMENSIONS ARE IN INCHES (MILLIMETERS) 2) ALL DIMENSIONS ARE AFTER PLATING. 3) BREAK CORNERS & EDGES .005 R. MAX. 4) CHAM. 1ST & LAST THREADS. 5) SURFACE ROUGHNESS 63-MIL-STD-10. 6) DIA.'S ON COMMON CENTERS TO BE CONCENTRIC WITHIN .005 T.I.R. 7) REMOVE ALL BURRS		
SURFACE AREA:	N/A	DECIMAL: .X \pm .030 .XX \pm .010 .XXX \pm .005	INTERPRET DIMENSIONS AND TOLERANCES PER ASME Y14.5M - 1994	TITLE: SMPS VITA 67.3 BACKPLANE TERMINATION	
PROPRIETARY THE INFORMATION CONTAINED IN THIS DRAWING IS THE SOLE PROPERTY OF SV MICROWAVE, INC. ANY REPRODUCTION IN PART OR AS A WHOLE WITHOUT THE WRITTEN PERMISSION OF SV MICROWAVE, INC IS PROHIBITED.		THIRD ANGLE PROJECTION	DRAWN: JPM 09/17/21		
			CHECKED: SEE PDM	SIZE B	DWG. NO. 8038-4009
			APPROVED: SEE PDM	SCALE: 12:1	SHEET 1 OF 1