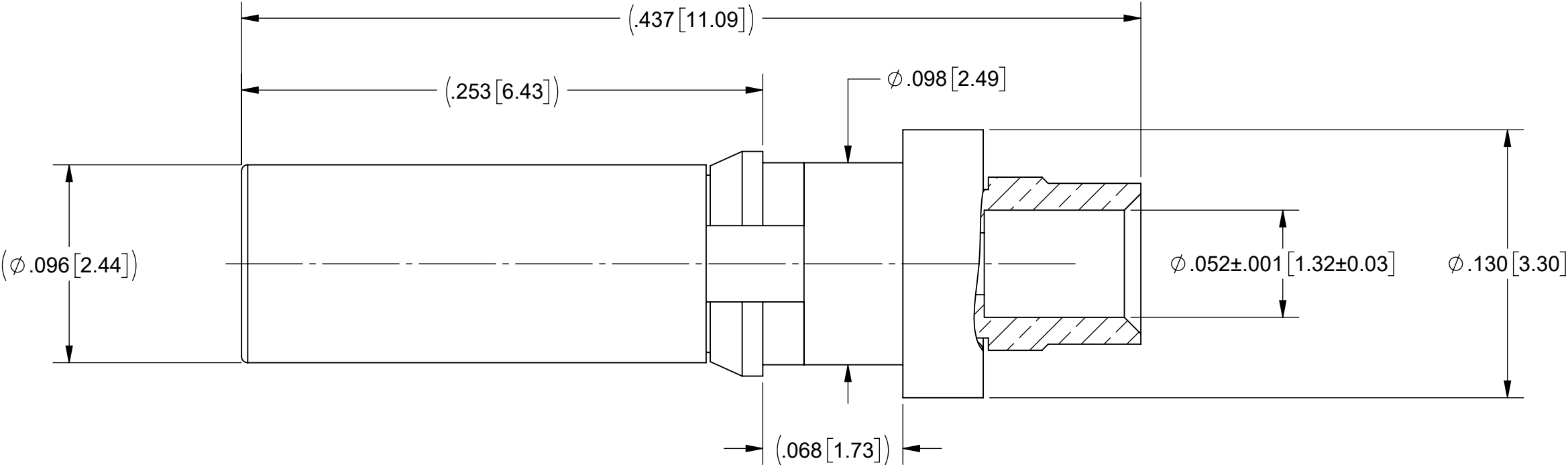


PRODUCT DATA DRAWING

REVISION HISTORY			
REV	DESCRIPTION	DATE	APPROVED
B	DCN 58039	09/25	SEE PDM



MATERIAL:

BODY & SHROUD:	STAINLESS STEEL PER AMS-5640, ALLOY UNS S30300, TYPE 1; OR ASTM A 585 TYPE 303 , CONDA.
CONTACT, FERRULE, & RETAINING RING:	BERYLLIUM COPPER PER ASTM B196, ALLOY No. UNS C17300, TD04
INSULATOR:	PTFE PER ASTM D1710, TYPE I, GRADE 1, CLASS B

FINISH:

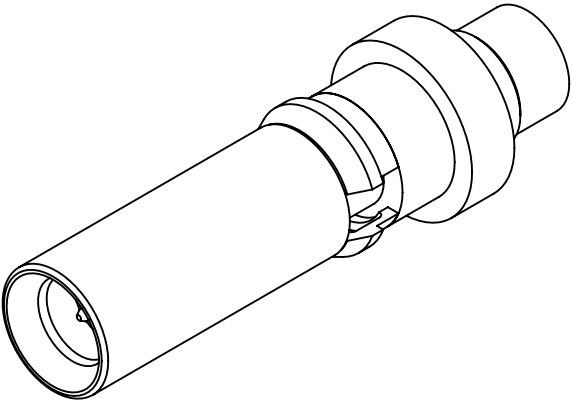
BODY & SHROUD:	PASSIVATED PER AMS-2700
CONTACT & FERRULE:	GOLD PER ASTM B488, TYPE II, CODE C, CLASS 1.27, OVER NICKEL PER AMS-QQ-N-290, CLASS 1, .00005" MIN.
RETAINING RING:	NICKEL PER AMS-QQ-N-290, CLASS 1, GRADE G


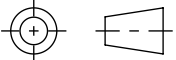
PERFORMANCE:

IMPEDANCE:	50 OHMS
FREQ. RANGE:	DC TO 67.0 GHz

NOTES:

- FOR USE WITH SV MICROWAVE VITA 67.3 SMPS PLUG-IN MODULES.
- THIS SMPS GEN1 CONTACT IS NO LONGER RECOMMENDED FOR NEW DESIGNS. THIS CONNECTOR NOT COMPATIBLE WITH NEW SMPS GEN2 MODULES. THIS CONNECTOR IS DESIGNED FOR SF9311-60171 & 9311-80025. WHEN THIS CONTACT IS INSTALLED IN A GEN1 MODULE, IT WILL MATE TO EITHER GEN1 OR GEN2 POPULATED BACKPLANE ASSEMBLIES. CONTACT US AT APPLICATIONS@SVMICRO.COM FOR A MORE INFORMATION.



MATERIAL:	SEE NOTES	DIMENSIONS ARE IN INCHES TOLERANCES:	UNLESS OTHERWISE SPECIFIED	 www.svmicrowave.com	
FINISH:	SEE NOTES	FRACTIONAL: $\pm 1/64$ ANGULAR: X° $\pm 1^{\circ}0'$ X°X' $\pm 15'$	1) ALL DIMENSIONS ARE IN INCHES (MILLIMETERS) 2) ALL DIMENSIONS ARE AFTER PLATING. 3) BREAK CORNERS & EDGES .005 R. MAX. 4) CHAM. 1ST & LAST THREADS. 5) SURFACE ROUGHNESS 63-MIL-STD-10. 6) DIA.'S ON COMMON CENTERS TO BE CONCENTRIC WITHIN .005 T.I.R. 7) REMOVE ALL BURRS		
SURFACE AREA:	N/A	DECIMAL: .X $\pm .030$.XX $\pm .010$.XXX $\pm .005$	INTERPRET DIMENSIONS AND TOLERANCES PER ASME Y14.5M - 1994	TITLE: SMPS VITA 67.3 PIN CONTACT FOR Ø.047 CABLE	
PROPRIETARY THE INFORMATION CONTAINED IN THIS DRAWING IS THE SOLE PROPERTY OF SV MICROWAVE, INC. ANY REPRODUCTION IN PART OR AS A WHOLE WITHOUT THE WRITTEN PERMISSION OF SV MICROWAVE, INC IS PROHIBITED.		THIRD ANGLE PROJECTION		SIZE DWG. NO.	SF3811-60060
				B	
		DRAWN: JDT 10/16/19		SCALE: 16:1	SHEET 1 OF 1
		CHECKED: SEE PDM			
		APPROVED: SEE PDM			