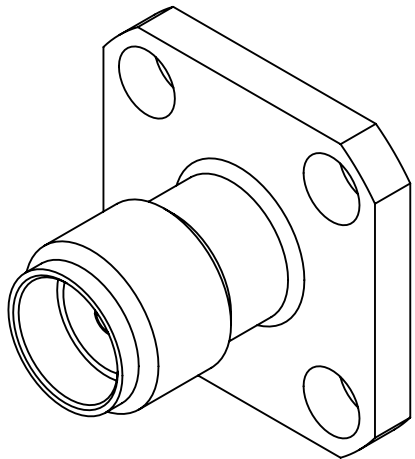


PRODUCT DATA DRAWING

REVISION HISTORY			
REV	DESCRIPTION	DATE	APPROVED
A	DCN 57263	06/25	SEE PDM



MATERIAL:

BODY: STAINLESS STEEL PER ASTM A582
TYPE 303, CONDITION A

CONTACT: BERYLLIUM COPPER PER ASTM B196,
ALLOY No. UNS C17300, TD04

INSULATOR: PTFE PER ASTM D1710, TYPE I, GRADE
1, CLASS B

FINISH:

BODY: GOLD PER MIL-DTL-45204, TYPE II,
GRADE C, CLASS 1 OVER NICKEL
PER AMS-QQ-N-290, CLASS 1, .00005"

MIN.

CONTACT: GOLD PER ASTM B488, TYPE II,
CODE C, CLASS 1.27, OVER NICKEL
PER AMS-QQ-N-290, CLASS 1, .00005"

MIN.

PERFORMANCE:

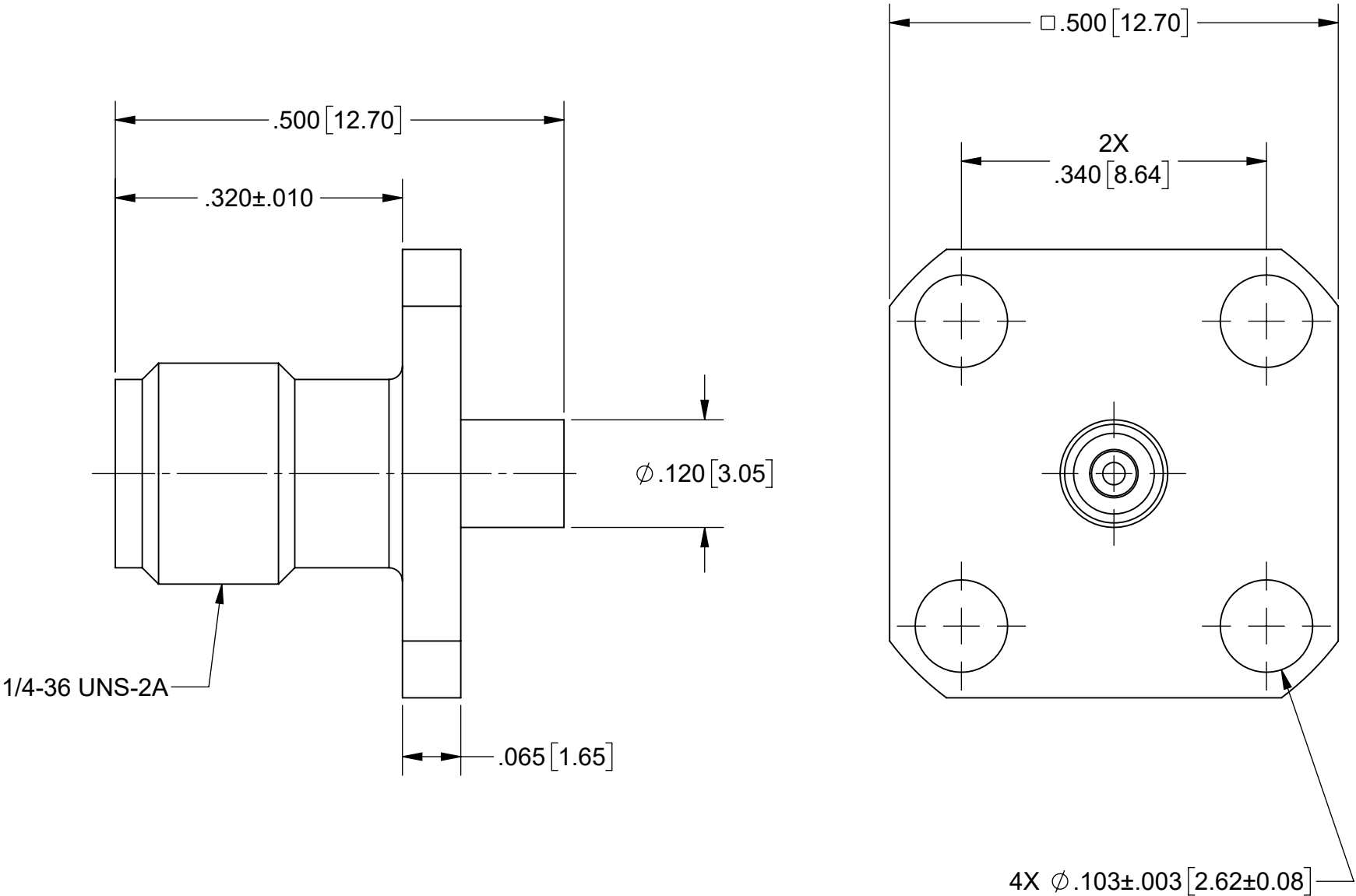
IMPEDANCE: 50 OHMS


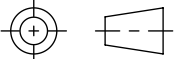
FREQ. RANGE: DC TO 18.0 GHz

VSWR: 1.07+0.008F (F IN GHz)

INSERTION LOSS: .03 X SQRT(F(F IN GHz))

OPERATING TEMP.: -65 °C TO +165 °C



MATERIAL: SEE NOTES	DIMENSIONS ARE IN INCHES TOLERANCES: FRACTIONAL: ±1/64 ANGULAR: X° ±1°0' X°X' ±15'	UNLESS OTHERWISE SPECIFIED 1) ALL DIMENSIONS ARE IN INCHES (MILLIMETERS) 2) ALL DIMENSIONS ARE AFTER PLATING. 3) BREAK CORNERS & EDGES .005 R. MAX. 4) CHAM. 1ST & LAST THREADS. 5) SURFACE ROUGHNESS 63-MIL-STD-10. 6) DIA.'S ON COMMON CENTERS TO BE CONCENTRIC WITHIN .005 T.I.R. 7) REMOVE ALL BURRS	 www.svmicrowave.com	
FINISH: SEE NOTES	DECIMAL: .X ±.030 .XX ±.010 .XXX ±.005	INTERPRET DIMENSIONS AND TOLERANCES PER ASME Y14.5M - 1994	TITLE: SMA JACK 4 HOLE FLANGE FOR Ø.086 CABLE	
SURFACE AREA: N/A	THIRD ANGLE PROJECTION 	DRAWN: NHR 03/08/11	SIZE DWG. NO. B M39012/82B3001	
THE INFORMATION CONTAINED IN THIS DRAWING IS THE SOLE PROPERTY OF SV MICROWAVE, INC. ANY REPRODUCTION IN PART OR AS A WHOLE WITHOUT THE WRITTEN PERMISSION OF SV MICROWAVE, INC IS PROHIBITED.		CHECKED: SEE PDM	SCALE: 6:1	SHEET 1 OF 1
		APPROVED: SEE PDM		