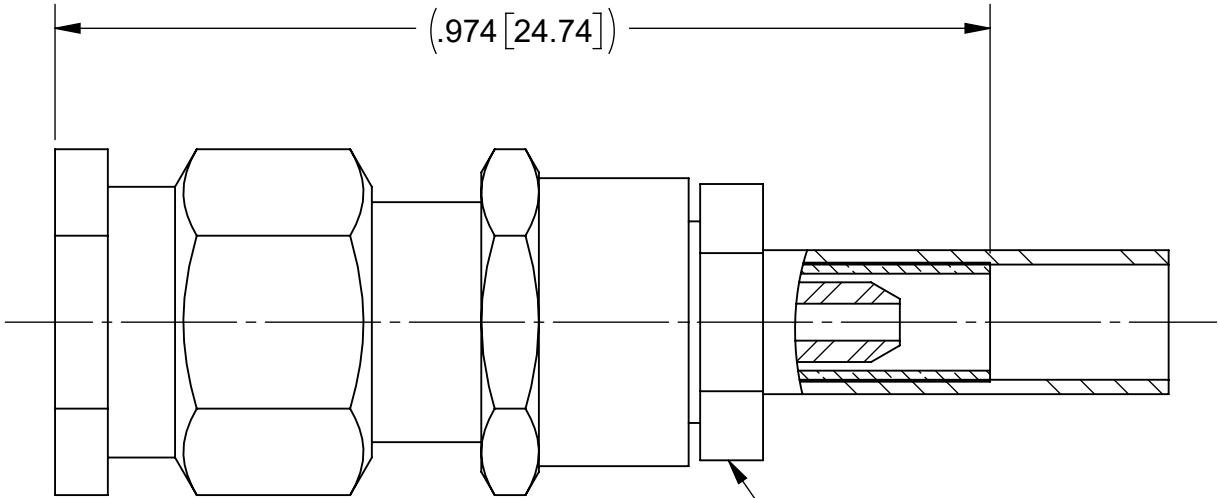
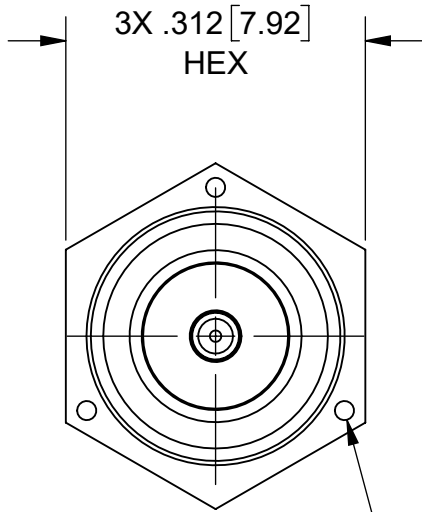
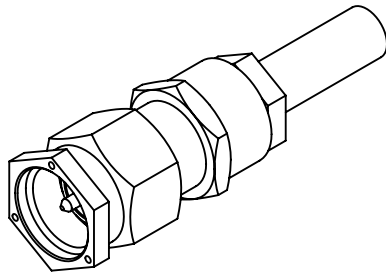


PRODUCT DATA DRAWING

REVISION HISTORY			
REV	DESCRIPTION	DATE	APPROVED
A	DCN 41763	10/15	SEE PDM
B	DCN 52305	02/23	



MATERIAL:


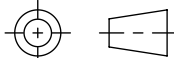
BODY & COUPLING NUT:	STAINLESS STEEL PER AMS-5640, ALLOY UNS S30300, TYPE 1
LOCK RING:	BERYLLIUM COPPER PER ASTM B196, ALLOY No. UNS C17300, TD04
CONTACT, CRIMP RING, FERRULE & CLAMP NUT:	BRASS PER ASTM B16, ALLOY UNS No. C36000
INSULATORS:	PTFE PER ASTM D1710, TYPE I, GRADE 1, CLASS B
GASKET:	SILICONE RUBBER PER A-A-59588, CLASS 2B, GRADE 50/60
TUBING:	M23053/4

FINISH:

BODY & COUPLING NUT:	PASSIVATED PER AMS-2700
CONTACT:	GOLD PER ASTM B488, TYPE II, CODE C, CLASS 1.52 OVER NICKEL PER AMS-QQ-N-290, CLASS 1
FERRULE, & CRIMP RING:	GOLD PER MIL-DTL-45204, TYPE II, GRADE C, CLASS 1 OVER NICKEL PER AMS-QQ-N-290, CLASS 1
CLAMP NUT:	NICKEL PER AMS-QQ-N-290, CLASS 1

PERFORMANCE:

IMPEDANCE:	50 OHMS
FREQ. RANGE:	DC TO 3.0 GHz
VSWR:	1.20 + .025(F):1 DC TO 3.0 GHz
INSERTION LOSS:	.06 X SQRT(F(F IN GHz))

MATERIAL:	SEE NOTES	DIMENSIONS ARE IN INCHES TOLERANCES:		UNLESS OTHERWISE SPECIFIED		<div> www.svmicrowave.com</div>	
FINISH:	SEE NOTES	FRACTIONAL: ±1/64 ANGULAR: X° ±1°0' X°X' ±15'		1) ALL DIMENSIONS ARE IN INCHES (MILLIMETERS) 2) ALL DIMENSIONS ARE AFTER PLATING. 3) BREAK CORNERS & EDGES .005 R. MAX. 4) CHAM. 1ST & LAST THREADS. 5) SURFACE ROUGHNESS 63-MIL-STD-10. 6) DIA.'S ON COMMON CENTERS TO BE CONCENTRIC WITHIN .005 T.I.R. 7) REMOVE ALL BURRS		TITLE:	
SURFACE AREA:	N/A	DECIMAL: .X ±.030 .XX ±.010 .XXX ±.005		INTERPRET DIMENSIONS AND TOLERANCES PER ASME Y14.5M - 1994		SMA PLUG SOLDER-CLAMP FOR RG-178 CABLE	
PROPRIETARY		THIRD ANGLE PROJECTION		DRAWN: DAL 10/12/15		SIZE DWG. NO.	
THE INFORMATION CONTAINED IN THIS DRAWING IS THE SOLE PROPERTY OF SV MICROWAVE, INC. ANY REPRODUCTION IN PART OR AS A WHOLE WITHOUT THE WRITTEN PERMISSION OF SV MICROWAVE, INC IS PROHIBITED.				CHECKED: SEE PDM		M39012/55-3006	
				APPROVED: SEE PDM		SCALE: 5:1 SHEET 1 OF 1	