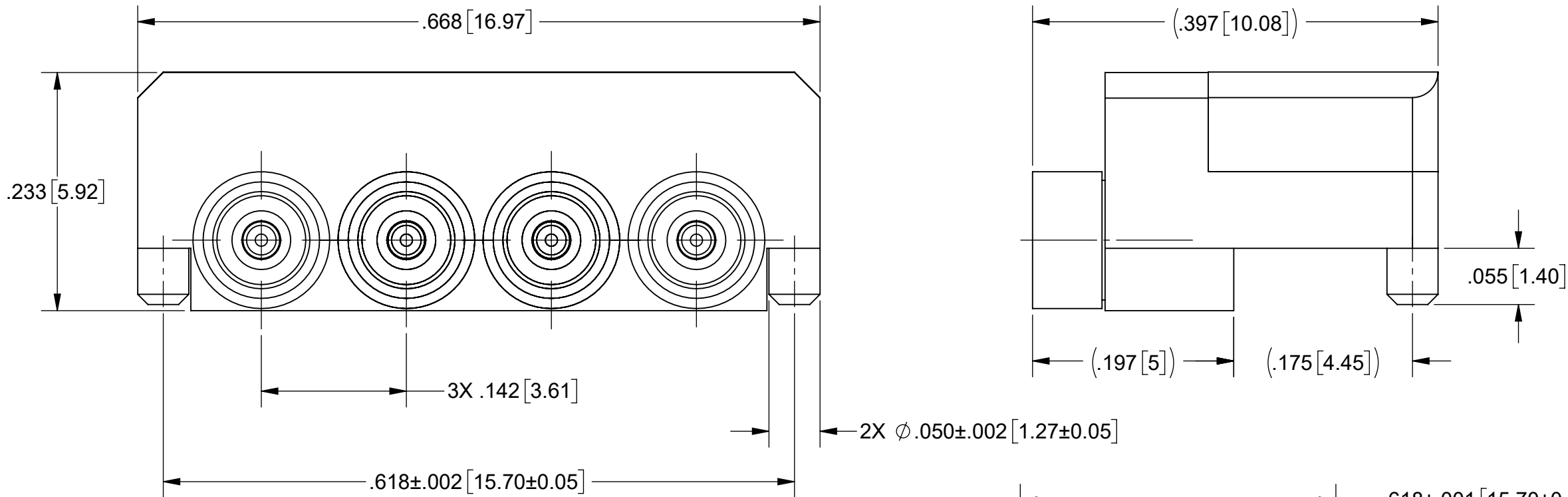
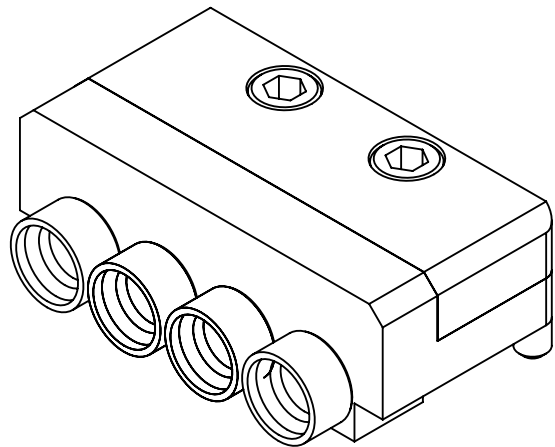


PRODUCT DATA DRAWING

REVISION HISTORY			
REV	DESCRIPTION	DATE	APPROVED
A	DCN 56576	03/25	SEE PDM



MATERIAL:

BODY, SCREWS,
PLATE &
SHROUDS:

CONTACTS:

INSULATORS:

EMI GASKET:

STAINLESS STEEL PER AMS-5640,
ALLOY UNS S30300, TYPE 1

BERYLLIUM COPPER PER ASTM B196,
ALLOY No. UNS C17300, TD04

PTFE PER ASTM D1710, TYPE I, GRADE 1, CLASS B

CONDUCTIVE POLYMER

FINISH:

BODY, SHROUDS,
PLATE &
CONTACTS:

GOLD PER ASTM B488, TYPE II,
CODE C, CLASS 1.27, OVER NICKEL
PER AMS-QQ-N-290, CLASS 1, .00005" MIN.

NOTES:

1. FOR OPTIMAL CROSSTALK AND ISOLATION, SV MUST BE CONSULTED FOR PCB SPECIFICATIONS

2. EMI LID TO BE INSTALLED AFTER REFLOW AND SOLDER JOINT INSPECTION.


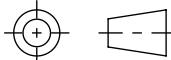
3. FOR A FOOTPRINT RECOMMENDATION SPECIFIC TO YOUR PCB, PLEASE CONTACT US AT applications@svmicro.com

RECOMMENDED MOUNTING PATTERN

SCREWS: PASSIVATED PER ASM 2700, TYPE 2

PERFORMANCE:

IMPEDANCE: 50 OHMS
FREQ. RANGE: DC TO 40.0 GHz

MATERIAL:	SEE NOTES	DIMENSIONS ARE IN INCHES TOLERANCES:	UNLESS OTHERWISE SPECIFIED		<div> www.svmicrowave.com</div> <div>TITLE: 4 PORT SMPM MALE EDGE PCB MOUNT</div>		
FINISH:	SEE NOTES	FRACTIONAL: ±1/64 ANGULAR: X° ±1°0' X'X' ±15'	1) ALL DIMENSIONS ARE IN INCHES (MILLIMETERS) 2) ALL DIMENSIONS ARE AFTER PLATING. 3) BREAK CORNERS & EDGES .005 R. MAX. 4) CHAM. 1ST & LAST THREADS. 5) SURFACE ROUGHNESS 63-MIL-STD-10. 6) DIA.'S ON COMMON CENTERS TO BE CONCENTRIC WITHIN .005 T.I.R. 7) REMOVE ALL BURRS				
SURFACE AREA:	N/A	DECIMAL: .X ±.030 .XX ±.010 .XXX ±.005	INTERPRET DIMENSIONS AND TOLERANCES PER ASME Y14.5M - 1994		SIZE DWG. NO. B 9311-60343-60344		
THE INFORMATION CONTAINED IN THIS DRAWING IS THE SOLE PROPERTY OF SV MICROWAVE, INC. ANY REPRODUCTION IN PART OR AS A WHOLE WITHOUT THE WRITTEN PERMISSION OF SV MICROWAVE, INC IS PROHIBITED.		THIRD ANGLE PROJECTION		DRAWN: KRR 02/25/25		SCALE: 8:1	SHEET 1 OF 1
				CHECKED: SEE PDM APPROVED: SEE PDM			