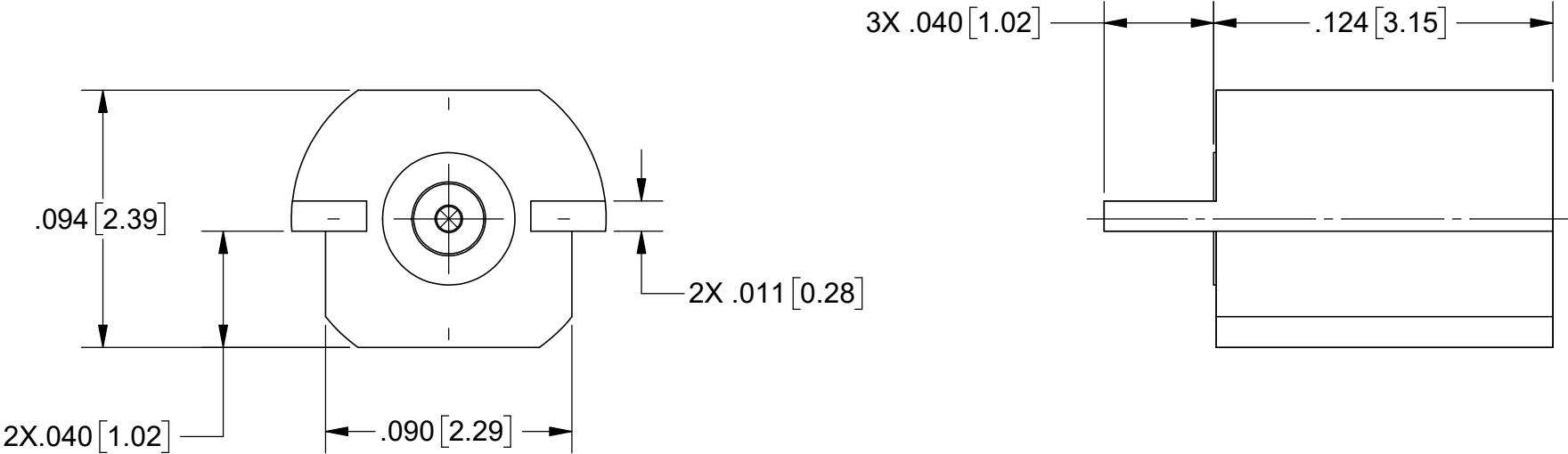
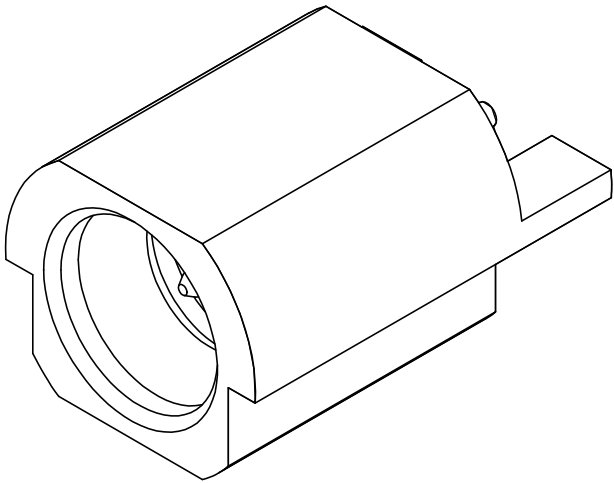


PRODUCT DATA DRAWING

REVISION HISTORY			
REV	DESCRIPTION	DATE	APPROVED
B	DCN 53354	11/23	SEE PDM



- NOTES:
- Sn96 SOLDER REQUIRED IN HATCHED AREAS AS SHOWN. SOLDER ON ANY OTHER AREAS NOT AFFECTING FORM, FIT OR FUNCTION IS ALLOWABLE, BUT NOT REQUIRED.
  - CONNECTOR MUST BE FLUSH TO BOARD FOR OPTIMAL PERFORMANCE.
  - INSPECT PER J-STD-001 CLASS 3 AND IPC-620 CLASS 3.
  - GOLD(Au) TERMINATION LEAD FINISH/REMOVAL SHALL MEET THE REQUIREMENTS OF J-STD-001.
  - ALL DIMENSIONS ARE PRIOR TO TINNING.
  - FOR RECOMMENDED FOOTPRINT TO YOUR SPECIFIC PCB, CONTACT SV MICROWAVE SALES DEPARTMENT. (sales@svmicro.com, 561-840-1800).

MATERIAL:

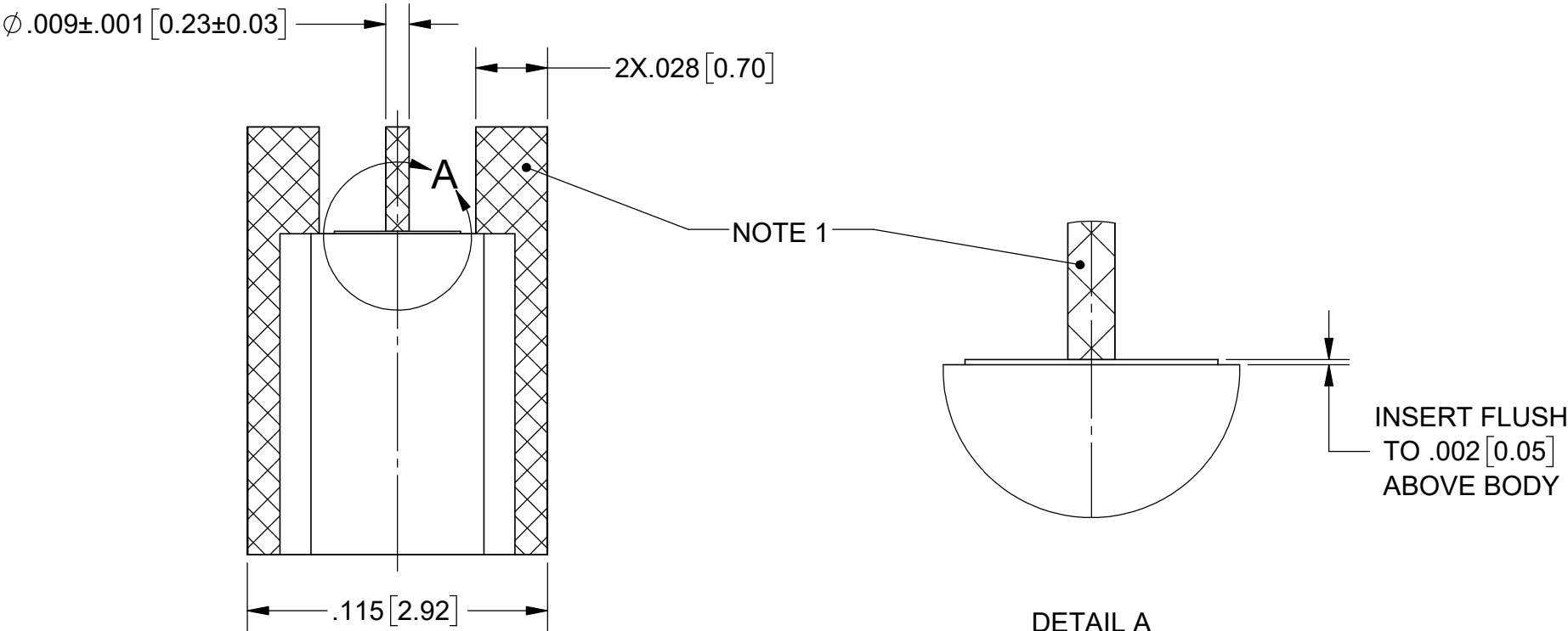
- PRESS SLEVE: STAINLESS STEEL PER AMS-5640, ALLOY UNS S30300, TYPE 1
- BODY & CONTACT: BERYLLIUM COPPER PER ASTM B196, ALLOY No. UNS C17300, TD04
- INSULATOR: PTFE PER ASTM D1710, TYPE I, GRADE 1, CLASS B

FINISH:


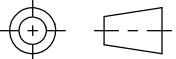
- PRESS SLEEVE, BODY & CONTACT: GOLD PER ASTM B488, TYPE II, CODE C, CLASS 1.27, OVER NICKEL PER AMS-QQ-N-290, CLASS 1, .00005" MIN.

PERFORMANCE:

- IMPEDANCE: 50 OHMS
- FREQ. RANGE: DC TO 65.0 GHz
- VSWR: 1.25 TO 26.5 GHz
- 1.35 TO 50.0 GHz
- INSERTION LOSS: .12 X SQRT(F(F IN GHz))
- ENGAGEMENT: 2.5 LBS TYP
- DISENGAGEMENT: 4.5 LBS TYP



DETAIL A  
SCALE 32 : 1

MATERIAL:	SEE NOTES	DIMENSIONS ARE IN INCHES TOLERANCES:	UNLESS OTHERWISE SPECIFIED	 www.svmicrowave.com	
FINISH:	SEE NOTES	FRACTIONAL: $\pm 1/64$ ANGULAR: X° $\pm 1^{\circ}0'$ X°X' $\pm 15'$	1) ALL DIMENSIONS ARE IN INCHES (MILLIMETERS) 2) ALL DIMENSIONS ARE AFTER PLATING. 3) BREAK CORNERS & EDGES .005 R. MAX. 4) CHAM. 1ST & LAST THREADS. 5) SURFACE ROUGHNESS 63-MIL-STD-10. 6) DIA.'S ON COMMON CENTERS TO BE CONCENTRIC WITHIN .005 T.I.R. 7) REMOVE ALL BURRS		
SURFACE AREA:	N/A	DECIMAL: X $\pm .030$ .XX $\pm .010$ .XXX $\pm .005$	INTERPRET DIMENSIONS AND TOLERANCES PER ASME Y14.5M - 1994	TITLE: SMPS (FD) EDGE LAUNCH	
PROPRIETARY THE INFORMATION CONTAINED IN THIS DRAWING IS THE SOLE PROPERTY OF SV MICROWAVE, INC. ANY REPRODUCTION IN PART OR AS A WHOLE WITHOUT THE WRITTEN PERMISSION OF SV MICROWAVE, INC IS PROHIBITED.		THIRD ANGLE PROJECTION		SIZE DWG. NO.	3811-40003-TD
				SCALE: 16:1	SHEET 1 OF 1
		DRAWN: JMC 09/22/09			
		CHECKED: SEE PDM			
		APPROVED: SEE PDM			