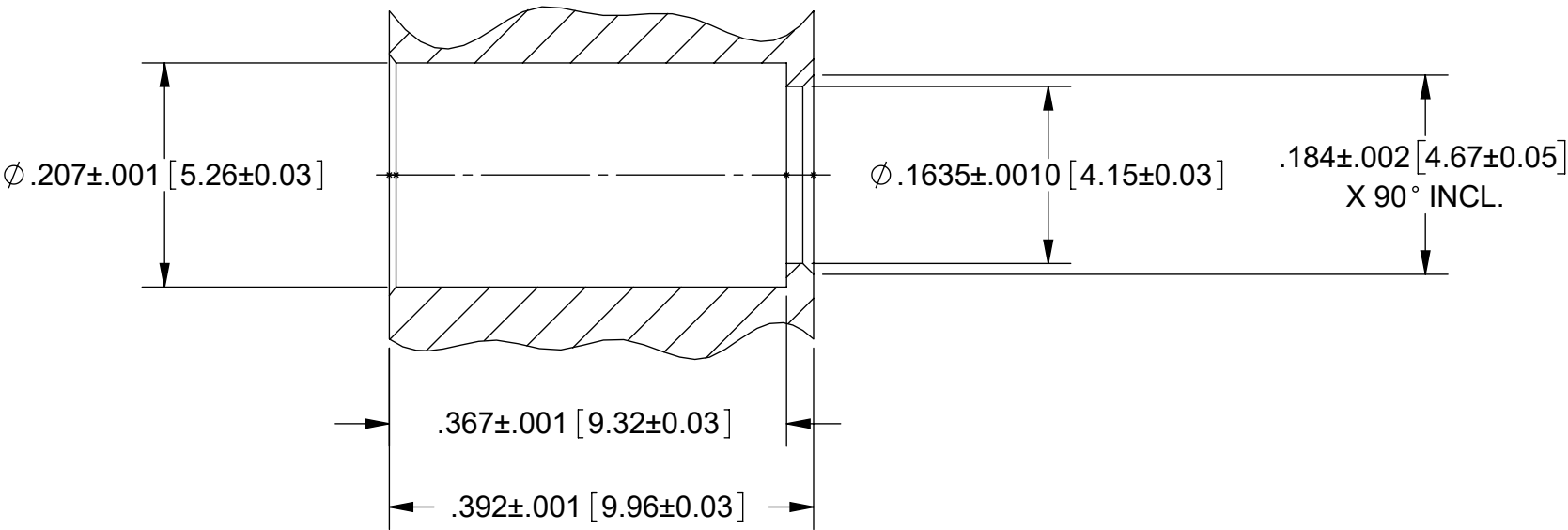
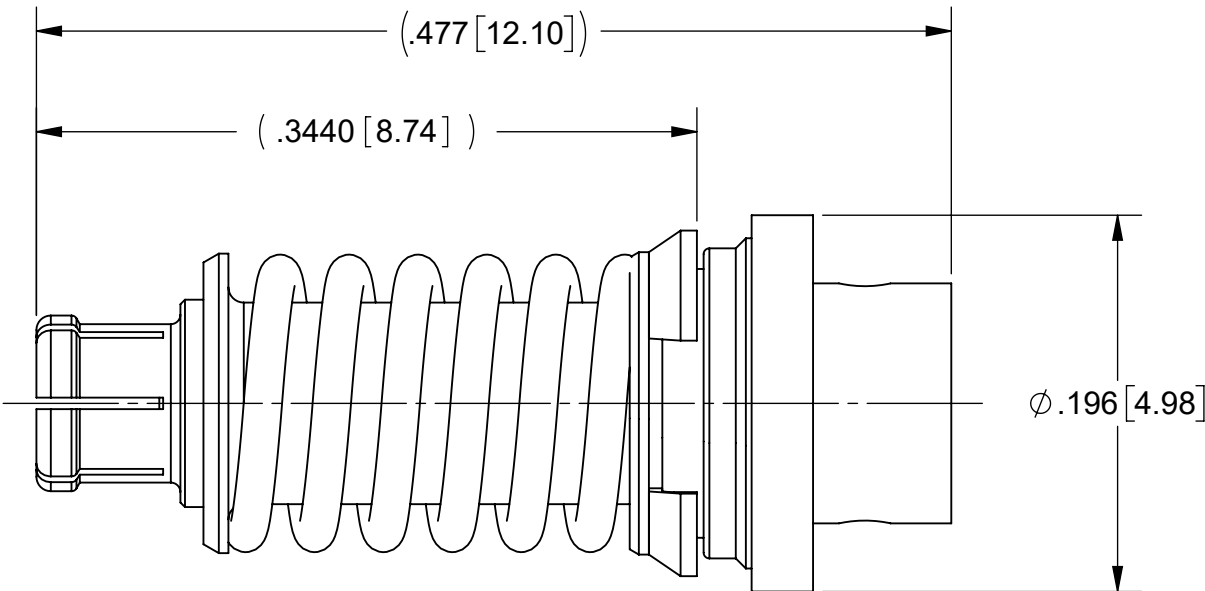
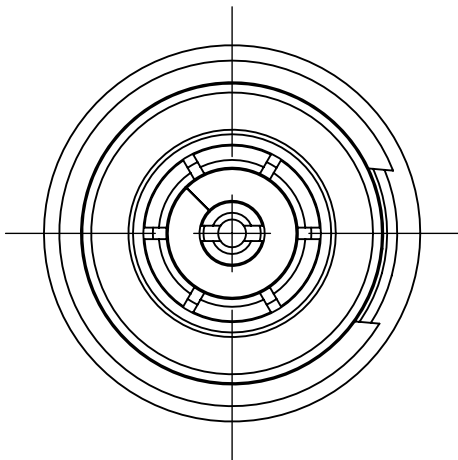
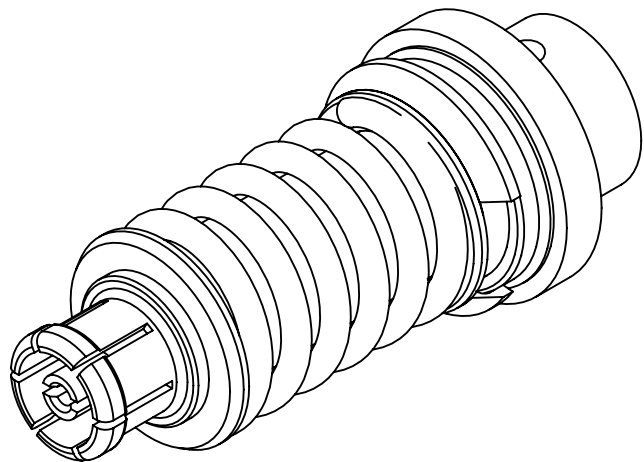


PRODUCT DATA DRAWING

REVISION HISTORY			
REV	DESCRIPTION	DATE	APPROVED
C	DCN 42164	03/16	DAL
D	DCN 48135	11/18	STW
E	DCN 50805	05/21	BNK



RECOMMENDED MOUNTING HOLE

MATERIAL:

BODY, CONTACT,
FERRULE &
RETAINING RING:

BERYLLIUM COPPER

INSULATOR:

PTFE

COMPRESSION
SPRING, SLEEVE
& WASHER:

STAINLESS STEEL

FINISH:

BODY, CONTACT
& FERRULE:

GOLD OVER NICKEL

RETAINING RING:


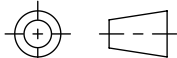
NICKEL

COMPRESSION
SPRING, SLEEVE
& WASHER:

PASSIVATED

PERFORMANCE:

IMPEDANCE: 50 OHMS
FREQ. RANGE: DC TO 40.0 GHz.
VSWR: 1.30:1 DC TO 40.0 GHz.

MATERIAL:	SEE NOTES	DIMENSIONS ARE IN INCHES TOLERANCES:		UNLESS OTHERWISE SPECIFIED		<div><div>www.svmicrowave.com</div></div>	
FINISH:	SEE NOTES	FRACTIONAL: ±1/64 ANGULAR: X° ±1°0' X°X' ±15'		1) ALL DIMENSIONS ARE IN INCHES (MILLIMETERS) 2) ALL DIMENSIONS ARE AFTER PLATING. 3) BREAK CORNERS & EDGES .005 R. MAX. 4) CHAM. 1ST & LAST THREADS. 5) SURFACE ROUGHNESS 63-MIL-STD-10. 6) DIA.'S ON COMMON CENTERS TO BE CONCENTRIC WITHIN .005 T.I.R. 7) REMOVE ALL BURRS		TITLE: VITA 67.1/2 PLUG-IN CONTACT FOR Ø.085 CABLE	
SURFACE AREA:	N/A	DECIMAL: .X ±.030 .XX ±.010 .XXX ±.005		INTERPRET DIMENSIONS AND TOLERANCES PER ASME Y14.5M - 1994			
PROPRIETARY		THIRD ANGLE PROJECTION		DRAWN: JMC 12/20/10		SIZE DWG. NO.	
THE INFORMATION CONTAINED IN THIS DRAWING IS THE SOLE PROPERTY OF SV MICROWAVE, INC. ANY REPRODUCTION IN PART OR AS A WHOLE WITHOUT THE WRITTEN PERMISSION OF SV MICROWAVE, INC IS PROHIBITED.				CHECKED: STW 12/20/10		3221-40022	
				APPROVED: STW 12/20/10		SCALE: 10:1 SHEET 1 OF 1	