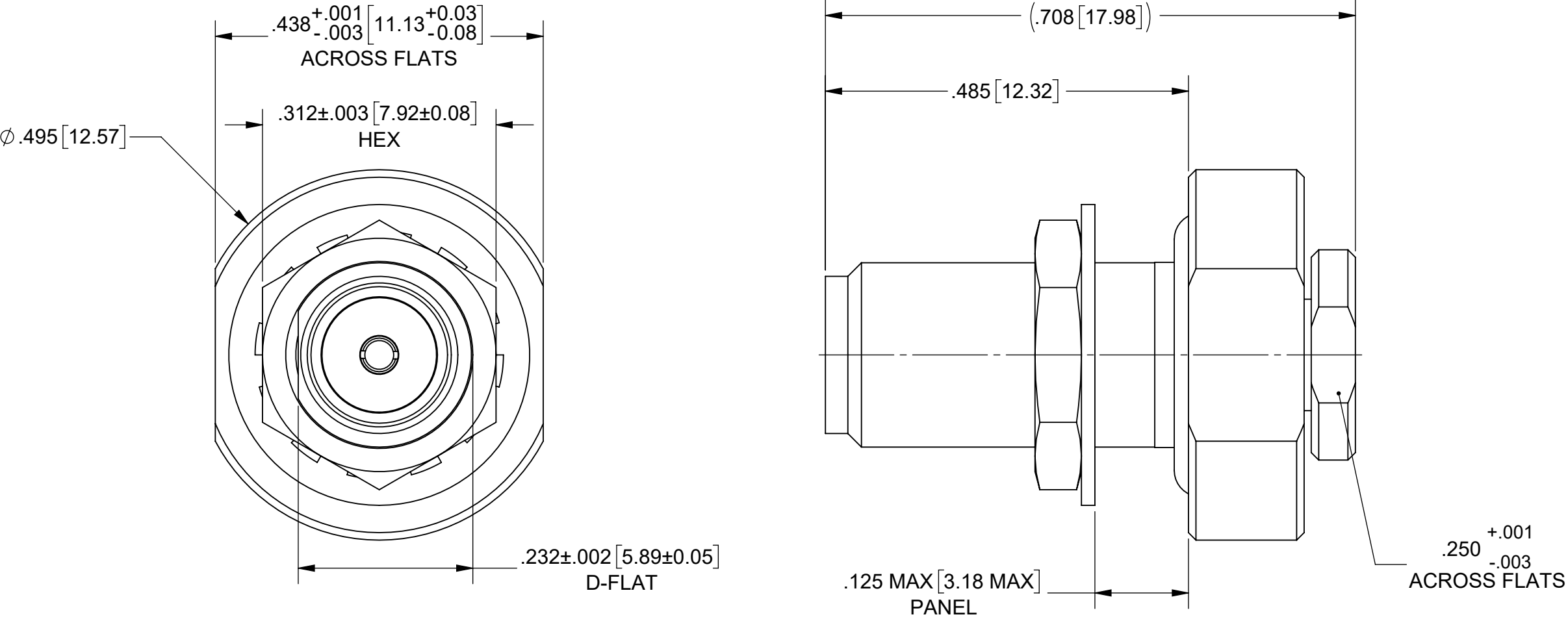


PRODUCT DATA DRAWING

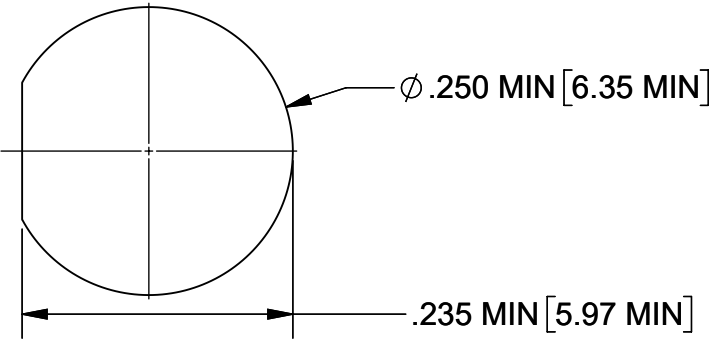
REVISION HISTORY			
REV	DESCRIPTION	DATE	APPROVED
A	DCN 52377	03/23	SEE PDM




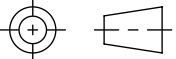
MATERIAL:	BERYLLIUM COPPER
BODY, INSERT, CLAMP NUT, HEX NUT, FERRULE & CONTACT:	
INSULATOR:	PTFE
O-RING:	SILICONE RUBBER
LOCKWASHER:	PHOSPHOR BRONZE

FINISH:	
BODY, INSERT, CLAMP NUT, HEX NUT, FERRULE, CONTACT & LOCKWASHER:	GOLD OVER COPPER

PERFORMANCE:	
IMPEDANCE:	50 OHMS
FREQ. RANGE:	DC TO 18.0 GHz.
MAGNETIC FIELD STRENGTH:	<.1 mG



RECOMMENDED MOUNTING HOLE

MATERIAL:	SEE NOTES	DIMENSIONS ARE IN INCHES TOLERANCES: FRACTIONAL: ±1/64    ANGULAR: X° ±1°0'    X°X' ±15' DECIMAL: .X    ±.030 .XX    ±.010 .XXX ±.005  INTERPRET DIMENSIONS AND TOLERANCES PER ASME Y14.5M - 1994	UNLESS OTHERWISE SPECIFIED 1) ALL DIMENSIONS ARE IN INCHES (MILLIMETERS) 2) ALL DIMENSIONS ARE AFTER PLATING. 3) BREAK CORNERS & EDGES .005 R. MAX. 4) CHAM. 1ST & LAST THREADS. 5) SURFACE ROUGHNESS 63-MIL-STD-10. 6) DIA.'S ON COMMON CENTERS TO BE CONCENTRIC WITHIN .005 T.I.R. 7) REMOVE ALL BURRS	 www.svmicrowave.com	
FINISH:	SEE NOTES			TITLE: SMA STR. F (NON-MAGNETIC) CONNECTOR FOR TFLEX 405 CABLE	
SURFACE AREA:	N/A				
PROPRIETARY THE INFORMATION CONTAINED IN THIS DRAWING IS THE SOLE PROPERTY OF SV MICROWAVE, INC. ANY REPRODUCTION IN PART OR AS A WHOLE WITHOUT THE WRITTEN PERMISSION OF SV MICROWAVE, INC IS PROHIBITED.		THIRD ANGLE PROJECTION	DRAWN: JCL 11/01/22	SIZE B	DWG. NO. 2921-40055
			CHECKED: SEE PDM	SCALE: 6:1	
			APPROVED: SEE PDM		