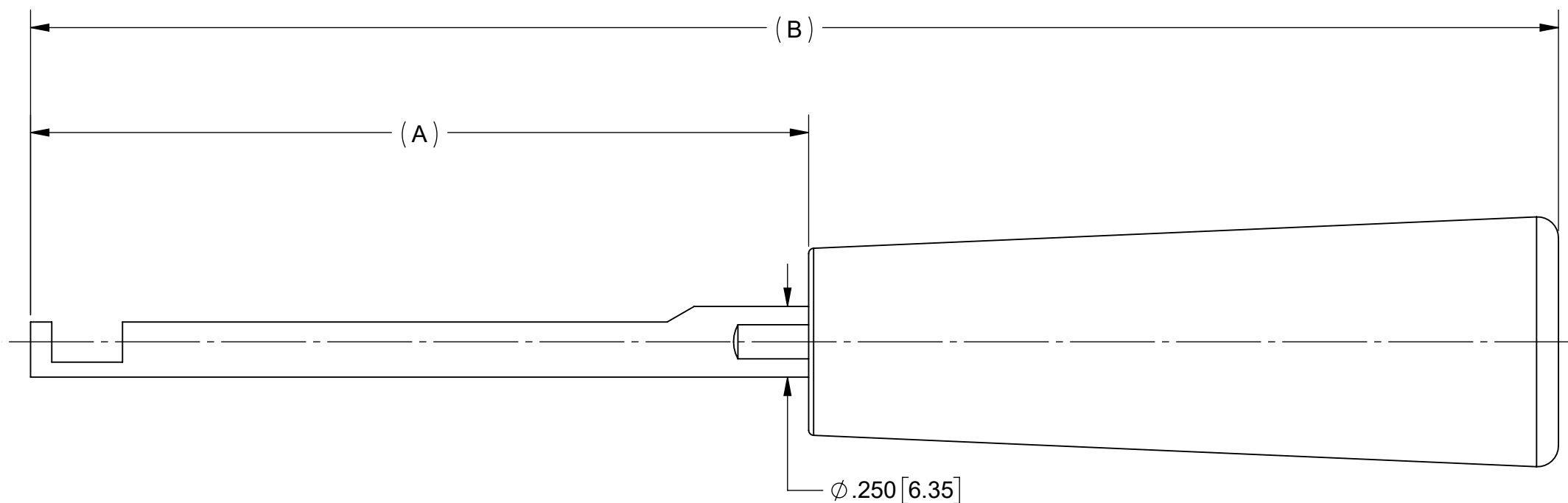
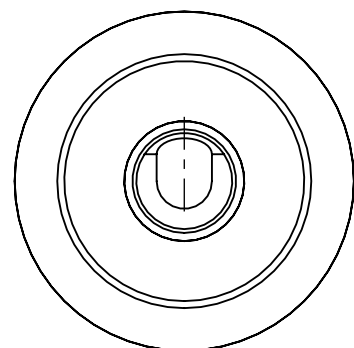
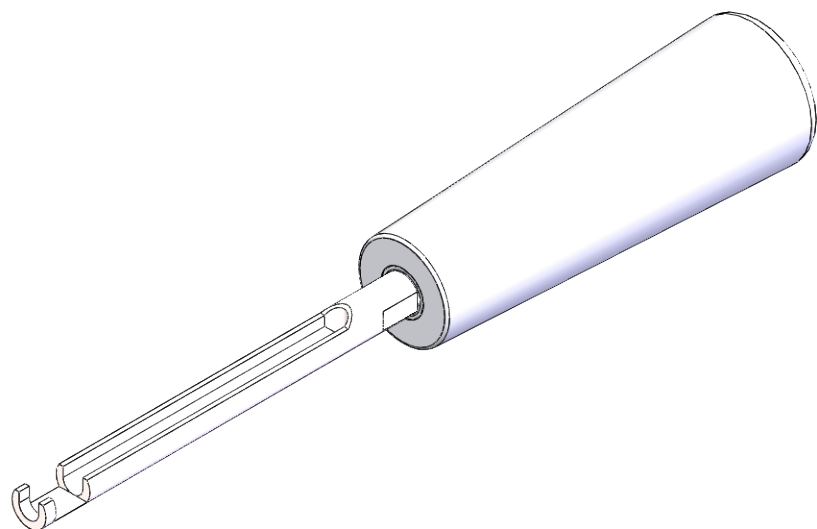


PRODUCT DATA DRAWING

REVISION HISTORY			
REV	DESCRIPTION	DATE	APPROVED
A	DCN 49410	9/25	SEE PDM



MATERIAL:

TOOL SHAFT: STAINLESS STEEL PER AMS 5640,
ALLOY UNS S30300, TYPE 1
OR ASTM A582 TYPE 303, CONDITION A.

HANDLE: PHENOLIC PLASTIC


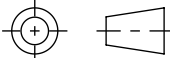
FINISH:

BODY: PASSIVATED PER AMS 2700

NOTES:

- DESIGNED TO WORK WITH THREADED SMPM CONNECTOR SYSTEM BY UTILIZING THE FLATS ON THE REAR OF THE COUPLING NUT, ASSISTING THE MATING ACTION.
- USE WITH 3221-60016 OR SIMILAR.

PART NUMBER	DIM "A"	DIM "B"
500-32-058	2.75	5.40
500-32-059	8.00	10.65

MATERIAL: SEE NOTES	DIMENSIONS ARE IN INCHES TOLERANCES: FRACTIONAL: $\pm 1/64$ ANGULAR: X° $\pm 1'0''$ X°X' $\pm 15''$	UNLESS OTHERWISE SPECIFIED 1) ALL DIMENSIONS ARE IN INCHES (MILLIMETERS) 2) ALL DIMENSIONS ARE AFTER PLATING. 3) BREAK CORNERS & EDGES .005 R. MAX. 4) CHAM. 1ST & LAST THREADS. 5) SURFACE ROUGHNESS 63-MIL-STD-10. 6) DIA: 'S ON COMMON CENTERS TO BE CONCENTRIC WITHIN .005 T.I.R. 7) REMOVE ALL BURRS	 www.svmicrowave.com
FINISH: SEE NOTES	DECIMAL: X $\pm .030$.XX $\pm .010$.XXX $\pm .005$		
SURFACE AREA: N/A	INTERPRET DIMENSIONS AND TOLERANCES PER ASME Y14.5M - 1994		TITLE: THREADED SMPM TORQUE TOOL
PROPRIETARY THE INFORMATION CONTAINED IN THIS DRAWING IS THE SOLE PROPERTY OF SV MICROWAVE, INC. ANY REPRODUCTION IN PART OR AS A WHOLE WITHOUT THE WRITTEN PERMISSION OF SV MICROWAVE, INC IS PROHIBITED.	THIRD ANGLE PROJECTION	DRAWN: JPM 9/2/25	SIZE DWG. NO. B 500-32-058-059
		CHECKED: SEE PDM	SCALE: 2:1
		APPROVED: SEE PDM	SHEET 1 OF 1