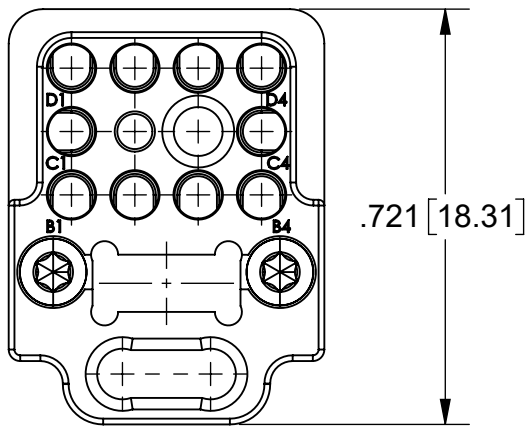
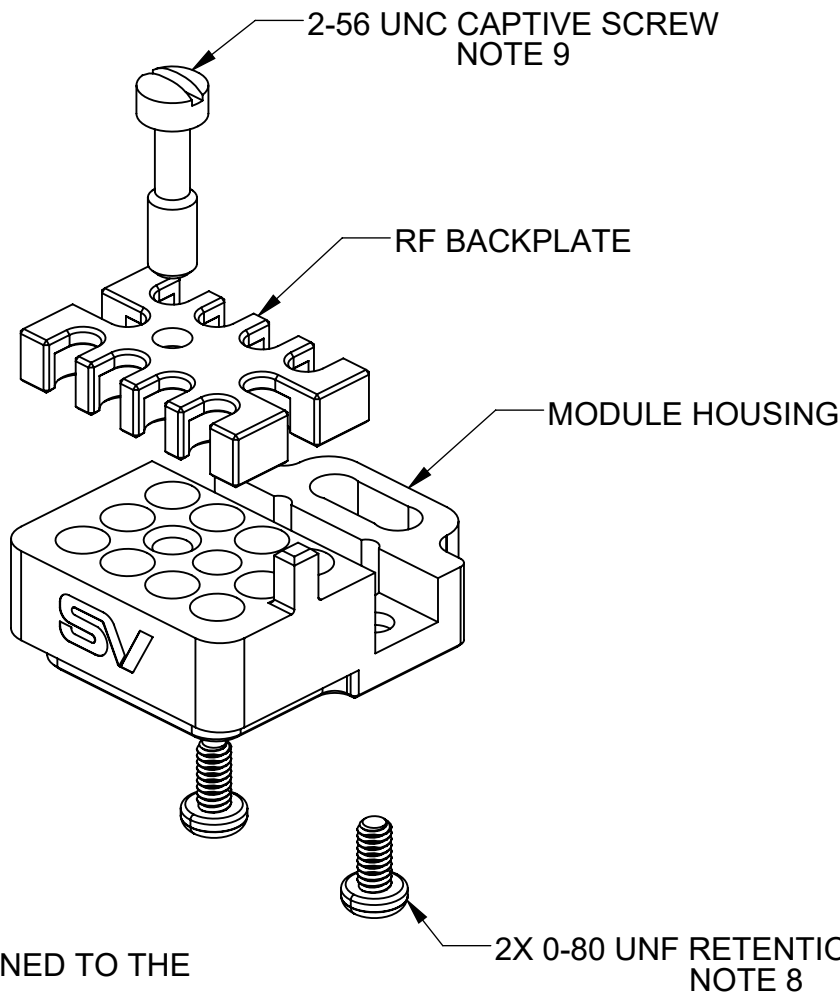
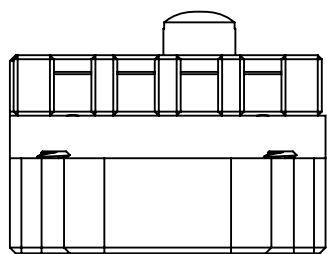
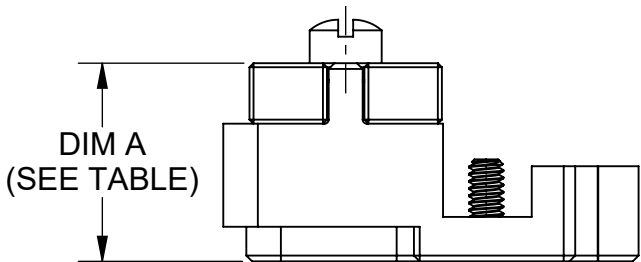
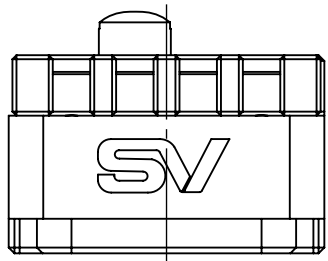
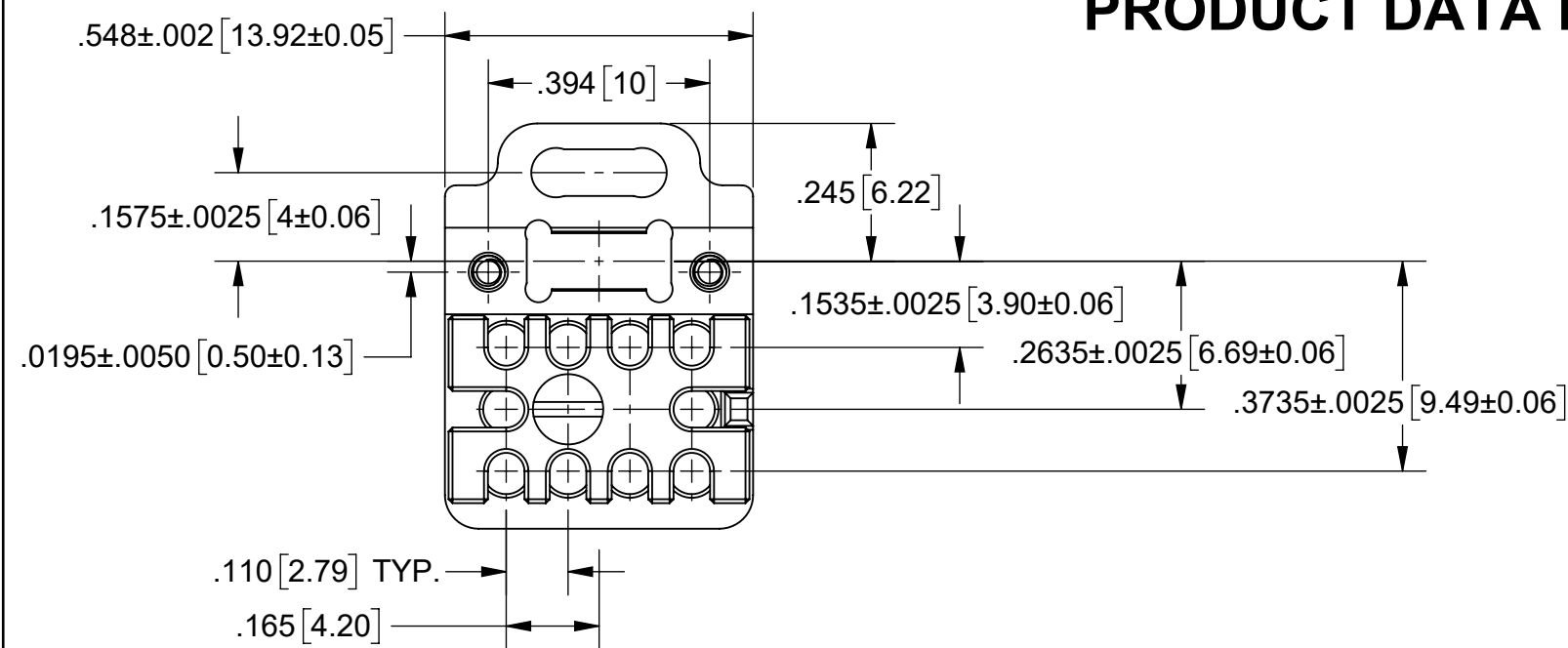


PRODUCT DATA DRAWING

REVISION HISTORY			
REV	DESCRIPTION	DATE	APPROVED
-	NRN 49058	4/25	SEE PDM



NOTES:

1. COMPLIANT TO VITA 66.5, VITA 65 SECTION 6.4.5.7.4 AND ALIGNED TO THE SOSA TECHNICAL STANDARD.
2. DESIGNED TO USE WITH NanoRF PLUG-IN CONTACTS FOR Ø.047 CABLE, SV P/N: 8351-40001 (TE P/N 2302339-1).
3. LICENSED EQUIVALENT TO TE P/N 2313388-1 AND CAN BE USED AS A DROP-IN REPLACEMENT.
4. SHIPPED WITHOUT MT TRANSCEIVER NOR INTERPOSER.
5. MATES TO SV P/N 9341-80005 AND 9341-80006.
6. PCB LAYOUT ON SHEET 2.
7. 9351-80008-1 COMES WITH AN EXTENDED RF BACKPLATE THAT IS THICKER THAN THE STANDARD. THIS PROVIDES ADDITIONAL PROTECTION OF THE EXPOSED CABLE SOLDER JOINT.
8. RECOMMENDED INSTALLATION TORQUE: 1 IN-LB.
9. RECOMMENDED INSTALLATION TORQUE: 4 IN-LB.

MATERIAL:

MODULE HOUSING,  
& RF BACKPLATE:

ALUMINUM PER ASTM B211 ALLOY 6061-T6  
OR AMS-QQ-A-200/8 ALLOY 6061-T6

SCREWS:

STAINLESS STEEL

FINISH:


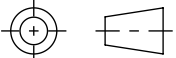
MODULE HOUSING,  
& RF BACKPLATE:

CHEMICAL CONVERSION COATING PER MIL-DTL-5541,  
CLASS 3 COLOR CLEAR, TYPE II

SCREWS:

PASSIVATED

SV P/N	RF BACKPLATE	DIMENSION A
9351-80008	STANDARD	.344 [8.74]
9351-80008-1	EXTENDED	.500 [12.70]

MATERIAL: SEE NOTES	DIMENSIONS ARE IN INCHES TOLERANCES: FRACTIONAL: ±1/64 ANGULAR: X° ±1°0' X°X' ±15'	UNLESS OTHERWISE SPECIFIED 1) ALL DIMENSIONS ARE IN INCHES (MILLIMETERS) 2) ALL DIMENSIONS ARE AFTER PLATING. 3) BREAK CORNERS & EDGES .005 R. MAX. 4) CHAM. 1ST & LAST THREADS. 5) SURFACE ROUGHNESS 63-MIL-STD-10. 6) DIA.'S ON COMMON CENTERS TO BE CONCENTRIC WITHIN .005 T.I.R. 7) REMOVE ALL BURRS	 www.svmicrowave.com TITLE: NANORF PLUG-IN MODULE, 10 POS RF & FIBER OPTIC FOR Ø.047 CABLE SIZE DWG. NO. B 9351-80008 SCALE: 3:1 SHEET 1 OF 2
FINISH: SEE NOTES	DECIMAL: .X ±.030 .XX ±.010 .XXX ±.005	INTERPRET DIMENSIONS AND TOLERANCES PER ASME Y14.5M - 1994	
SURFACE AREA: N/A	THIRD ANGLE PROJECTION	DRAWN: JDT 4/3/25	
THE INFORMATION CONTAINED IN THIS DRAWING IS THE SOLE PROPERTY OF SV MICROWAVE, INC. ANY REPRODUCTION IN PART OR AS A WHOLE WITHOUT THE WRITTEN PERMISSION OF SV MICROWAVE, INC IS PROHIBITED.		CHECKED: SEE PDM APPROVED: SEE PDM	

PRODUCT DATA DRAWING

REVISION HISTORY			
REV	DESCRIPTION	DATE	APPROVED
	SEE SHEET 1		SEE PDM

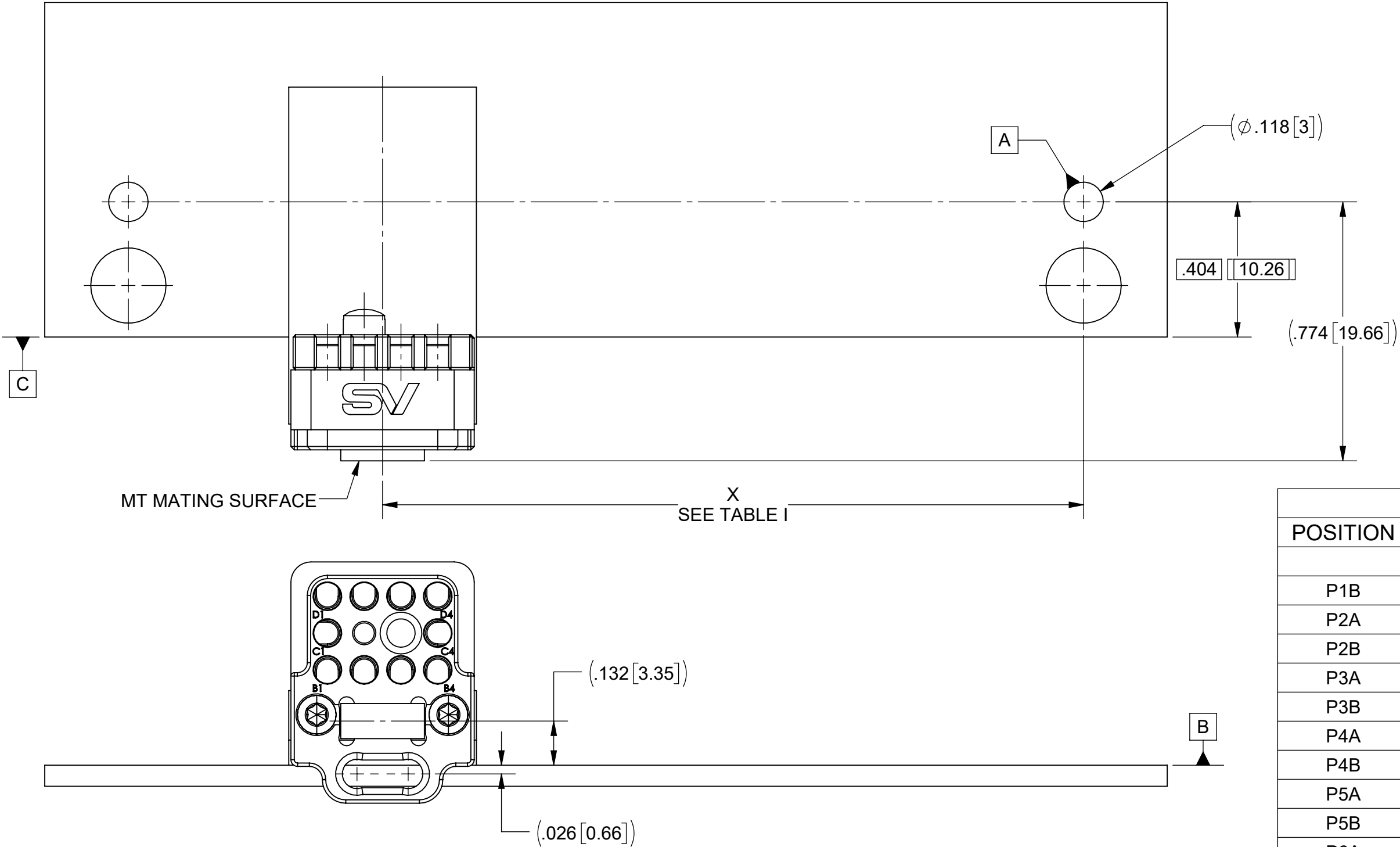

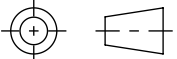


TABLE I			
POSITION	DIMENSION "X"		
	VITA 67.3-C	VITA 67.3-D	VITA 67.3-E
P1B	-	1.751 [44.47]	1.751 [44.47]
P2A	2.312 [58.73]	2.312 [58.73]	2.312 [58.73]
P2B	2.874 [72.99]	2.874 [72.99]	2.874 [72.99]
P3A	3.859 [98.01]	4.000 [101.60]	-
P3B	4.426 [112.41]	4.556 [115.72]	-
P4A	5.192 [131.88]	5.134 [130.40]	-
P4B	5.759 [146.28]	5.690 [144.52]	-
P5A	6.326 [160.68]	6.268 [159.20]	-
P5B	6.893 [175.08]	6.824 [173.32]	-
P6A	7.474 [189.83]	7.402 [188.00]	-
P6B	8.041 [204.23]	7.957 [202.12]	-

MATERIAL:	SEE NOTES	DIMENSIONS ARE IN INCHES TOLERANCES: FRACTIONAL: $\pm 1/64$ ANGULAR: X° $\pm 1^{\circ}0'$ X°X' $\pm 15'$ DECIMAL: .X $\pm .030$ .XX $\pm .010$ .XXX $\pm .005$ INTERPRET DIMENSIONS AND TOLERANCES PER ASME Y14.5M - 1994	UNLESS OTHERWISE SPECIFIED 1) ALL DIMENSIONS ARE IN INCHES (MILLIMETERS) 2) ALL DIMENSIONS ARE AFTER PLATING. 3) BREAK CORNERS & EDGES .005 R. MAX. 4) CHAM. 1ST & LAST THREADS. 5) SURFACE ROUGHNESS 63-MIL-STD-10. 6) DIA.'S ON COMMON CENTERS TO BE CONCENTRIC WITHIN .005 T.I.R. 7) REMOVE ALL BURRS	 www.svmicrowave.com	
FINISH:	SEE NOTES				
SURFACE AREA:	N/A				
<b>PROPRIETARY</b> THE INFORMATION CONTAINED IN THIS DRAWING IS THE SOLE PROPERTY OF SV MICROWAVE, INC. ANY REPRODUCTION IN PART OR AS A WHOLE WITHOUT THE WRITTEN PERMISSION OF SV MICROWAVE, INC IS PROHIBITED.		THIRD ANGLE PROJECTION	DRAWN: JDT 4/3/25	TITLE: NANORF PLUG-IN MODULE, 10 POS RF & FIBER OPTIC FOR Ø.047 CABLE	
			CHECKED: SEE PDM APPROVED: SEE PDM	SIZE B DWG. NO. 9351-80008	SCALE: 3:1
				SHEET 2 OF 2	