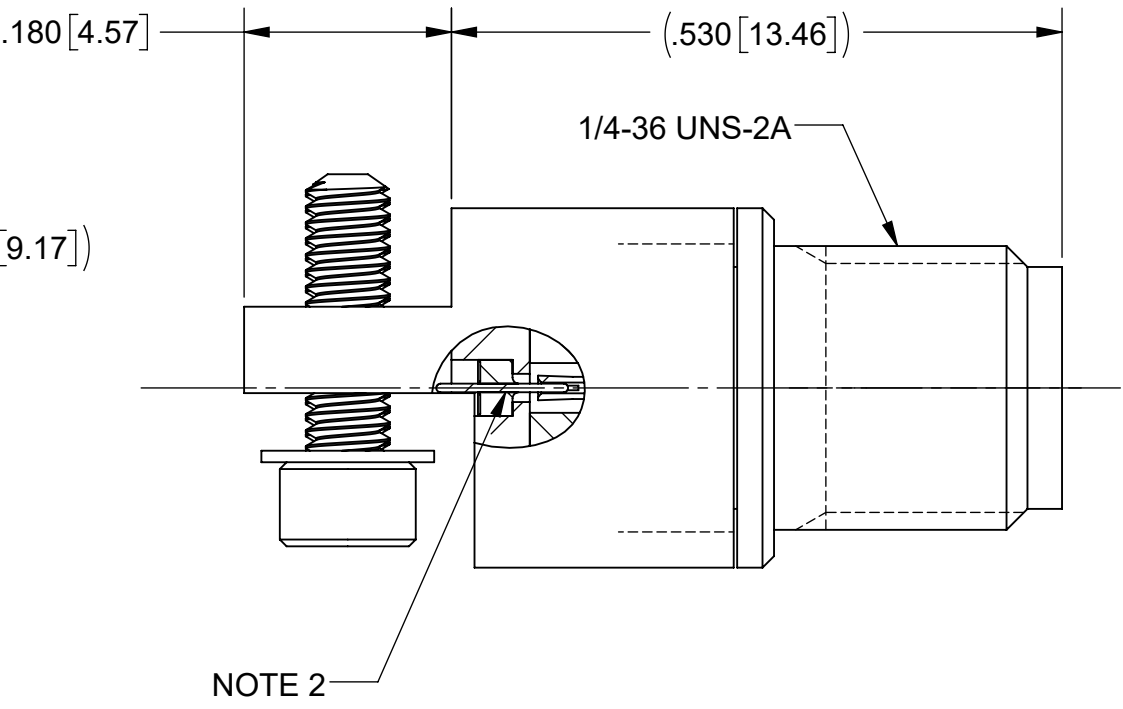
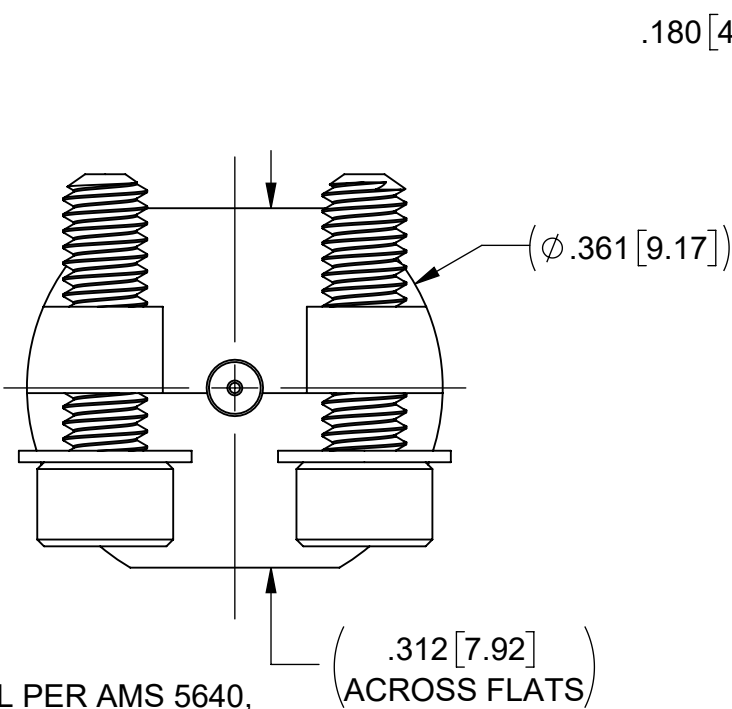
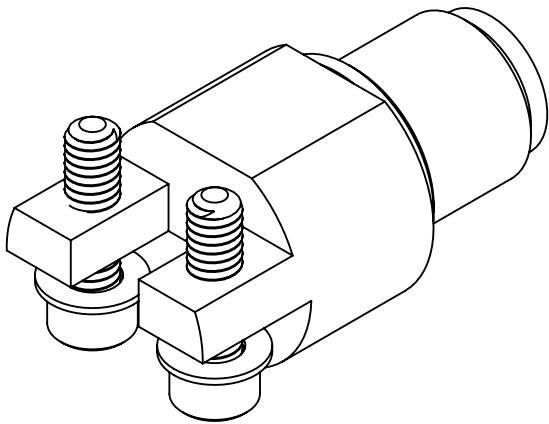


PRODUCT DATA DRAWING

REVISION HISTORY			
REV	DESCRIPTION	DATE	APPROVED
B	DCN 57663	08/25	SEE PDM



MATERIAL:

BODIES & INSERT: STAINLESS STEEL PER AMS 5640, ALLOY UNS S30300, TYPE 1 OR ASTM A582 TYPE 303, CONDITION A.

CONTACT: BERYLLIUM COPPER PER ASTM B196, ALLOY No. UNS C17300, TD04.

PIN: KOVAR PER ASTM-F15

GLASS: CORNING 7070

BEAD: ULTEM 1000

SCREWS AND WASHERS: 18-8 STAINLESS STEEL

FINISH:

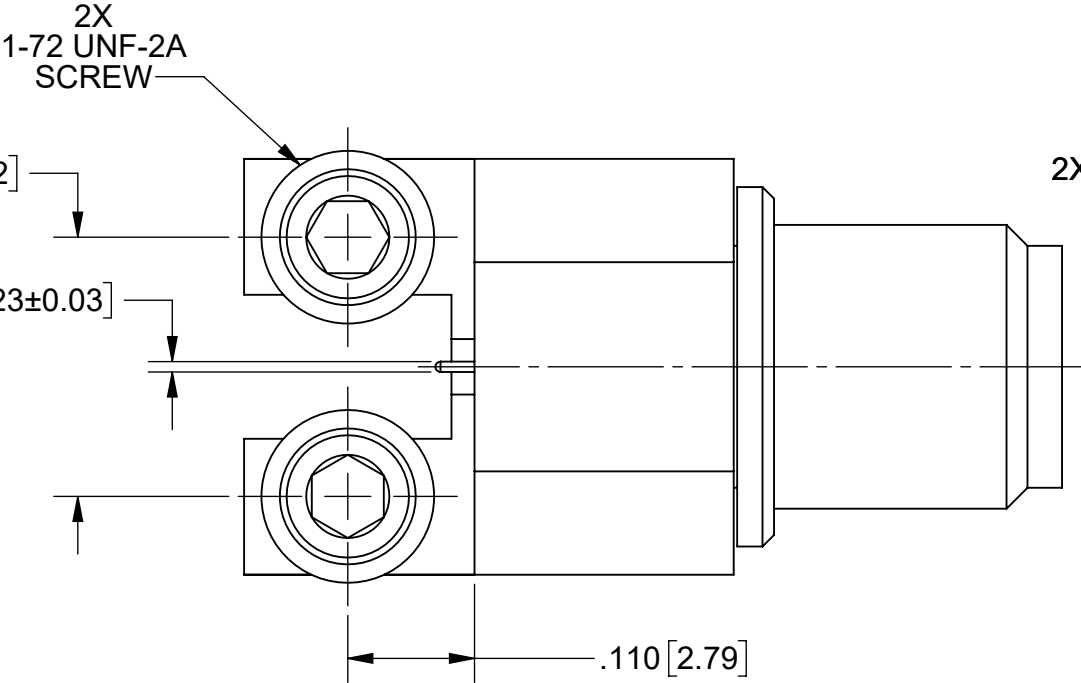
BODIES, CONTACT & PIN: GOLD PER ASTM B488, TYPE II, CODE C, CLASS 1.27, OVER NICKEL PER AMS-QQ-N-290, CLASS 1, .00005" MIN.

INSERT: PASSIVATED PER AMS 2700

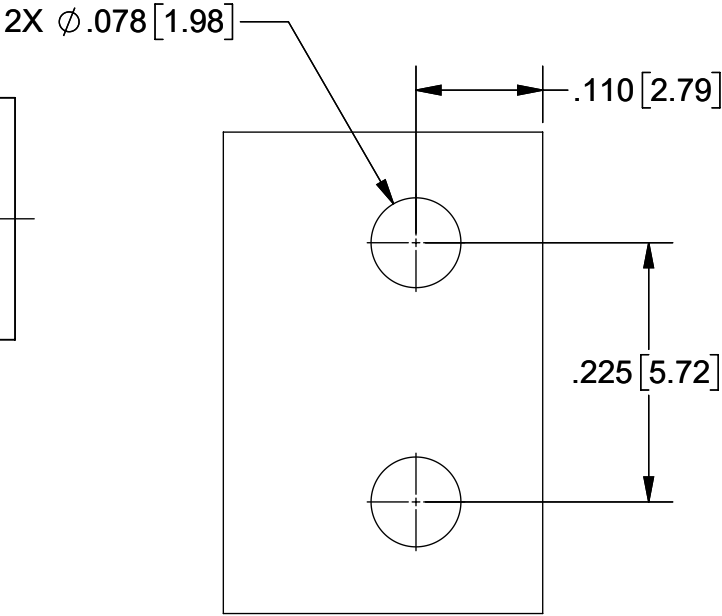
PERFORMANCE:


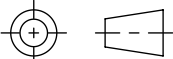
IMPEDANCE: 50 OHMS
FREQ. RANGE: DC TO 40.0 GHz.

- NOTES:
- MOUNTING SCREWS INTENDED FOR USE AS A SOLDER REFLOW FIXTURING AID.
 - UNIQUE 2-PART ASSEMBLY MECHANICALLY CAPTIVATES THE SOLDERED PIN AND ISOLATES IT FROM ANY MOVEMENT THAT THE INTERFACE CONTACT MAY SEE DURING MATING, PROTECTING THE PCB TRACE FROM DAMAGE.



RECOMMENDED MOUNTING PATTERN



MATERIAL:	SEE NOTES	DIMENSIONS ARE IN INCHES TOLERANCES:	UNLESS OTHERWISE SPECIFIED	 www.svmicrowave.com	
FINISH:	SEE NOTES	FRACTIONAL: $\pm 1/64$ ANGULAR: X° $\pm 1'0''$ X°X' $\pm 15''$	1) ALL DIMENSIONS ARE IN INCHES (MILLIMETERS) 2) ALL DIMENSIONS ARE AFTER PLATING. 3) BREAK CORNERS & EDGES .005 R. MAX. 4) CHAM. 1ST & LAST THREADS. 5) SURFACE ROUGHNESS 63-MIL-STD-10. 6) DIA.'S ON COMMON CENTERS TO BE CONCENTRIC WITHIN .005 T.I.R. 7) REMOVE ALL BURRS		
SURFACE AREA:	N/A	DECIMAL: .X $\pm .030$.XX $\pm .010$.XXX $\pm .005$	INTERPRET DIMENSIONS AND TOLERANCES PER ASME Y14.5M - 1994	TITLE: 2.92mm F TRACEGUARD EDGE LAUNCH CONNECTOR	
PROPRIETARY THE INFORMATION CONTAINED IN THIS DRAWING IS THE SOLE PROPERTY OF SV MICROWAVE, INC. ANY REPRODUCTION IN PART OR AS A WHOLE WITHOUT THE WRITTEN PERMISSION OF SV MICROWAVE, INC IS PROHIBITED.		THIRD ANGLE PROJECTION		SIZE DWG. NO.	1521-60235
				B	SCALE: 6:1
		DRAWN: JPM 6/12/24		SHEET 1 OF 1	
		CHECKED: SEE PDM			
		APPROVED: SEE PDM			