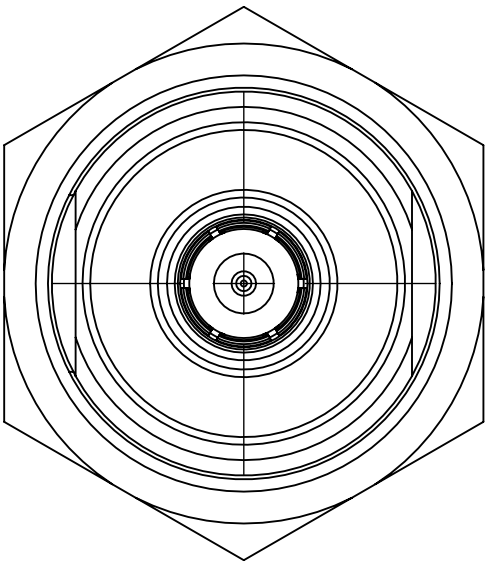
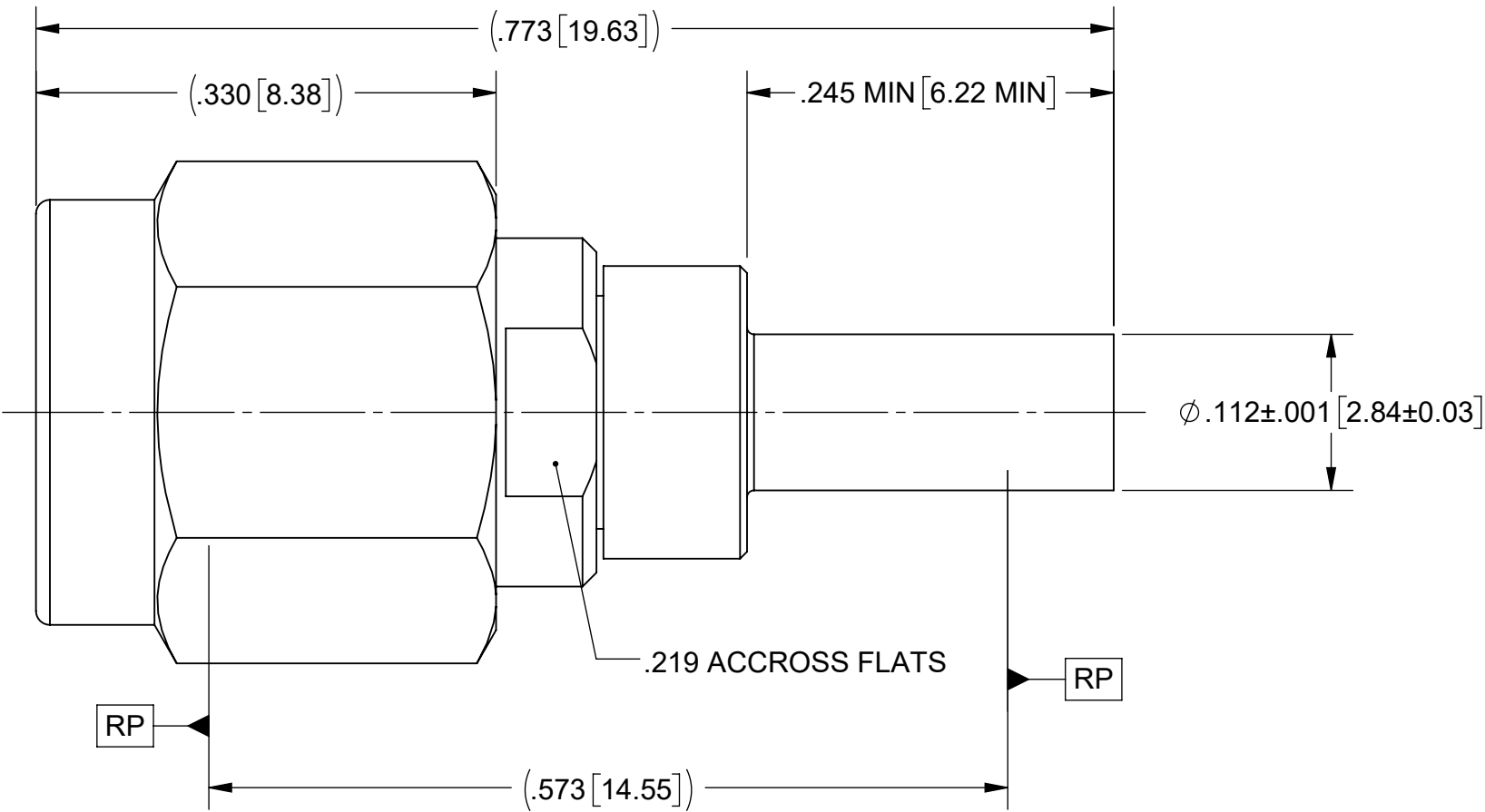
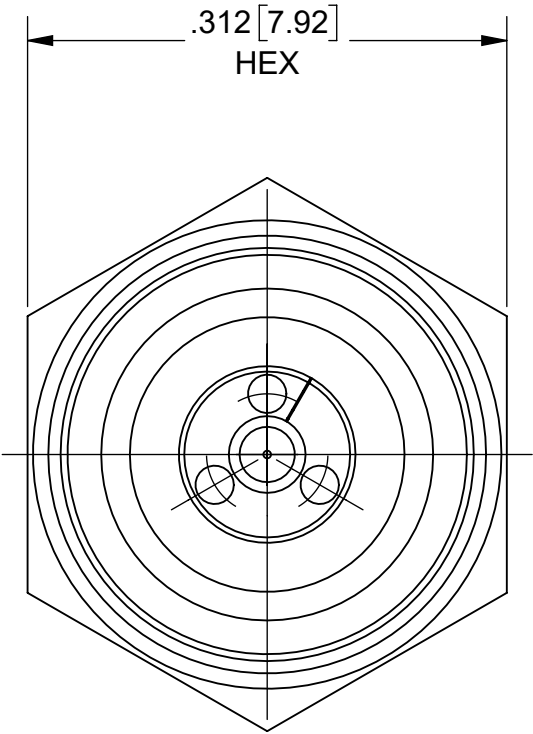


PRODUCT DATA DRAWING

REVISION HISTORY			
REV	DESCRIPTION	DATE	APPROVED
-	NRN 49139	05/25	SEE PDM



MATERIAL:

2.92mm BODY,  
INSERT, SLEEVE &  
COUPLING NUT:

STAINLESS STEEL PER AMS 5640, ALLOY UNS S30300,  
TYPE 1 OR ASTM A582 TYPE 303, CONDITION A.

SOCKET BODY,  
LOCK RING &  
CONTACT:

BERYLLIUM COPPER PER ASTM B196, ALLOY No. UNSC17300, TD04.

INSULATOR:

PTFE PER ASTM D1710, TYPE I, GRADE 1, CLASS B.

BEAD:

PEI (ULTEM 1000) PER ASTM D5205.

GASKET:

SILICONE RUBBER PER A-A-59588, CLASS 2B, GRADE 60 OR 70.

FINISH:

2.92mm BODY,  
INSERT, SLEEVE &  
COUPLING NUT:

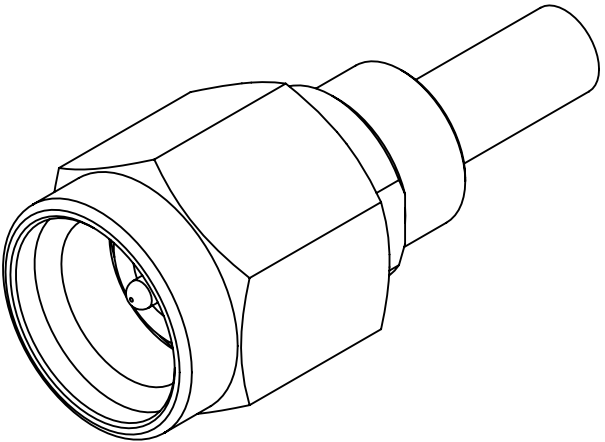
PASSIVATED PER AMS 2700.

SOCKET BODY &  
CONTACT:

GOLD PER ASTM B 488, TYPE II, CODE C, CLASS 1.27  
OVER NICKEL PER AMS-QQ-N-290, CLASS 1, .00005" MIN.

PERFORMANCE:

IMPEDANCE: 50 OHMS  
FREQ. RANGE: DC TO 40.0 GHz.



MATERIAL:	SEE NOTES	DIMENSIONS ARE IN INCHES TOLERANCES: FRACTIONAL: ±1/64    ANGULAR: X°    ±1°0' 
-----------	-----------	---