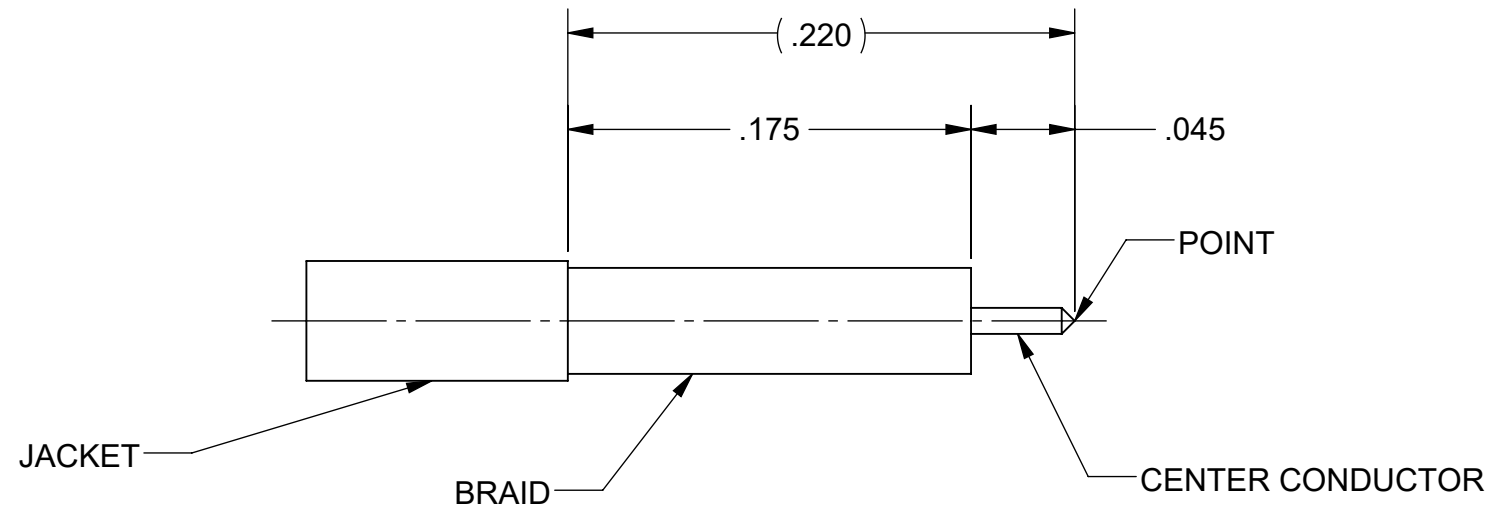
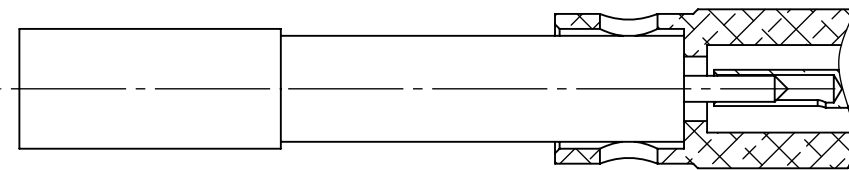


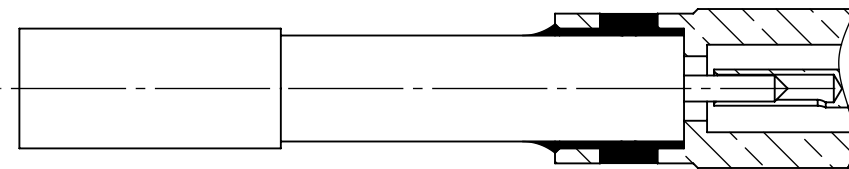
| REVISION HISTORY | | | |
|------------------|-------------|------|----------|
| REV | DESCRIPTION | DATE | APPROVED |
| - | NRN 48463 | 7/24 | SEE PDM |



STEP 1:
 1.1) TRIM CABLE TO DIMENSIONS SHOWN.
 1.2) POINT CENTER CONDUCTOR.



STEP 2:
 2.1) INSERT CABLE INTO REAR OF CONNECTOR.



STEP 3:
 3.1) SOLDER CABLE BRAID TO CONNECTOR FERRULE.

| | |
|--|-----|
| MATERIAL: | N/A |
| FINISH: | N/A |
| SURFACE AREA: | N/A |
| PROPRIETARY | |
| THE INFORMATION CONTAINED IN THIS DRAWING IS THE SOLE PROPERTY OF SV MICROWAVE, INC. ANY REPRODUCTION IN PART OR AS A WHOLE WITHOUT THE WRITTEN PERMISSION OF SV MICROWAVE, INC IS PROHIBITED. | |
| 2041-40001 | |
| USED ON: | |

| | |
|--|--|
| DIMENSIONS ARE IN INCHES TOLERANCES: | |
| FRACTIONAL: $\pm 1/64$ | ANGULAR: X° $\pm 1'0''$ X°X' $\pm 15''$ |
| DECIMAL: X $\pm .030$ | .XX $\pm .010$ |
| | .XXX $\pm .005$ |
| INTERPRET DIMENSIONS AND TOLERANCES PER ASME Y14.5M - 1994 | |
| THIRD ANGLE PROJECTION | |
| | |

| | |
|--|-------------|
| UNLESS OTHERWISE SPECIFIED | |
| 1) ALL DIMENSIONS ARE AFTER PLATING. 2) BREAK CORNERS & EDGES .005 R. MAX. 3) CHAM. 1ST & LAST THREADS. 4) SURFACE ROUGHNESS 63 / MIL-STD-10. 5) DIA.'S ON COMMON CENTERS TO BE CONCENTRIC WITHIN .005 T.I.R. 6) REMOVE ALL BURRS | |
| DRAWN: | JPM 7/18/24 |
| CHECKED: | SEE PDM |
| APPROVED: | SEE PDM |
| E.M. SIMULATION: | N/A |



| | | | |
|----------|----------|------------------------------------|--------------|
| TITLE: | | CABLE ASSEMBLY INSTRUCTIONS | |
| SIZE | DWG. NO. | 300-20-000 | |
| B | | SCALE: 12:1 | SHEET 1 OF 1 |