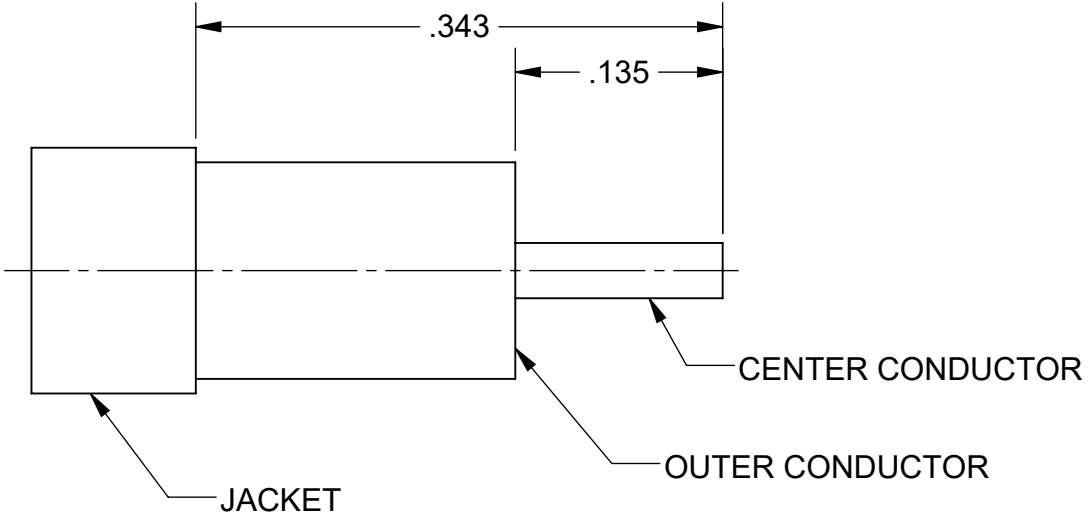
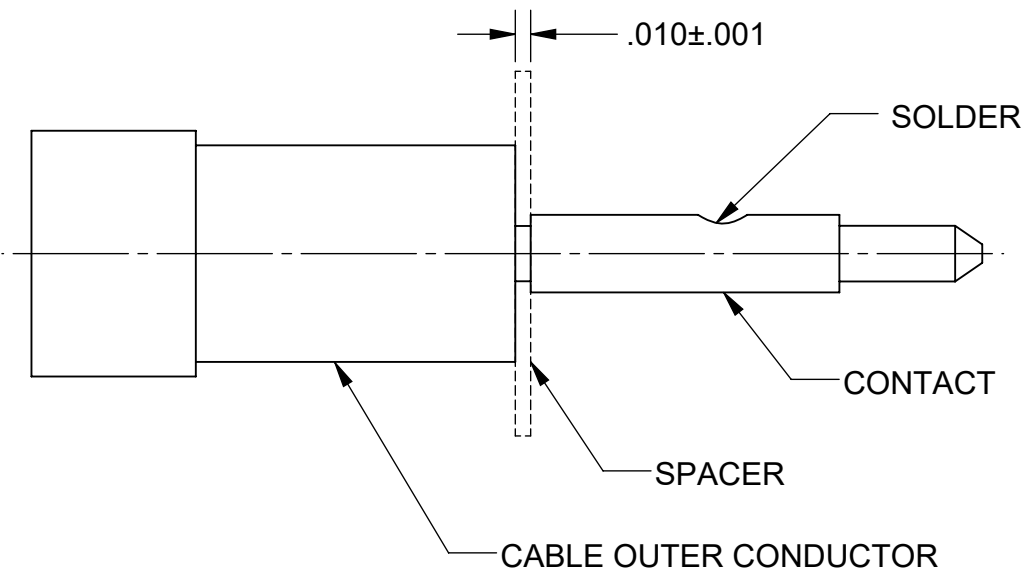
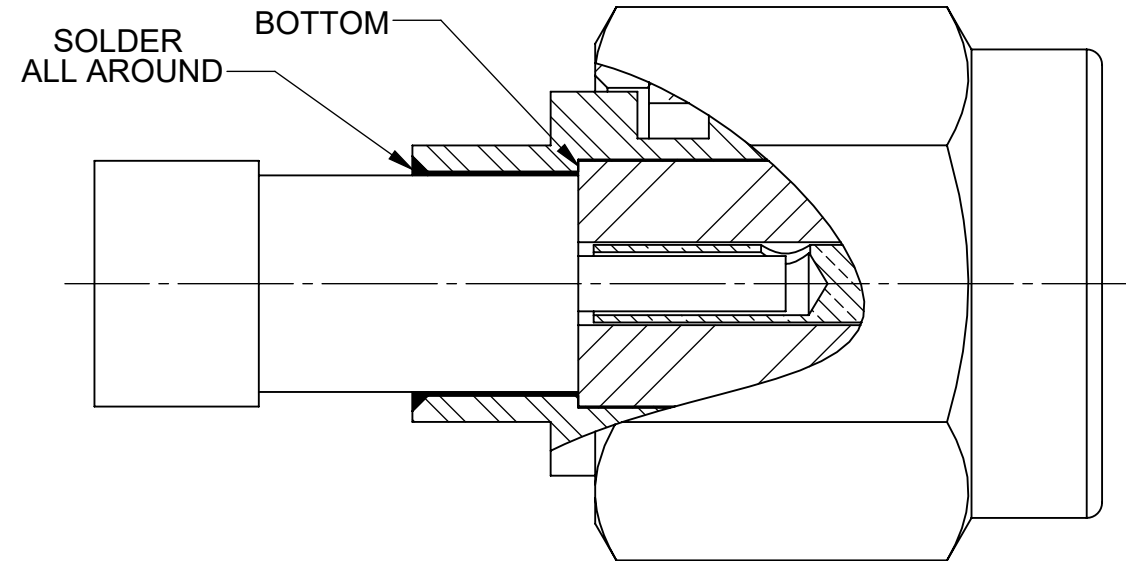



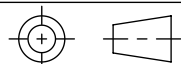
REVISION HISTORY			
REV	DESCRIPTION	DATE	APPROVED
B	DCN 49233	08/19	STW



STEP 1:
TRIM CABLE JACKET & OUTER CONDUCTOR/DIELECTRIC TO DIMENSIONS SHOWN.



STEP 2:
PLACE CONNECTOR CONTACT OVER CABLE CENTER CONDUCTOR. USE A SPACER TO MAINTAIN THE .010±.001 DIMENSION SHOWN. SOLDER CONNECTOR CONTACT TO CABLE CENTER CONDUCTOR. REMOVE SPACER.

MATERIAL: PER BOM	DIMENSIONS ARE IN INCHES TOLERANCES:	UNLESS OTHERWISE SPECIFIED	 2400 Centrepark West Drive, Suite 100 West Palm Beach, FL 33409
FINISH: PER BOM	FRACTIONAL: $\pm 1/64$ ANGULAR: $X^\circ \pm 1'0''$ $X^\circ X' \pm 15''$	1) ALL DIMENSIONS ARE AFTER PLATING. 2) BREAK CORNERS & EDGES .005 R. MAX. 3) CHAM. 1ST & LAST THREADS. 4) SURFACE ROUGHNESS 63 / MIL-STD-10. 5) DIA.'S ON COMMON CENTERS TO BE CONCENTRIC WITHIN .005 T.I.R. 6) REMOVE ALL BURRS	
SURFACE AREA: N/A	DECIMAL: X $\pm .030$.XX $\pm .010$.XXX $\pm .005$	INTERPRET DIMENSIONS AND TOLERANCES PER ASME Y14.5M - 1994	TITLE: CABLE ASSEMBLY INSTRUCTIONS
PROPRIETARY	THIRD ANGLE PROJECTION	DRAWN: SRM 08/07/19	SIZE: B CAGE CODE: 95077 DWG. NO.: 300-80-117
THE INFORMATION CONTAINED IN THIS DRAWING IS THE SOLE PROPERTY OF SV MICROWAVE, INC. ANY REPRODUCTION IN PART OR AS A WHOLE WITHOUT THE WRITTEN PERMISSION OF SV MICROWAVE, INC IS PROHIBITED.		CHECKED: STW 08/07/19	SCALE: 8:1
SF2902-6005		APPROVED: STW 08/07/19	SHEET 1 OF 1
USED ON:		E.M. SIMULATION: N/A	