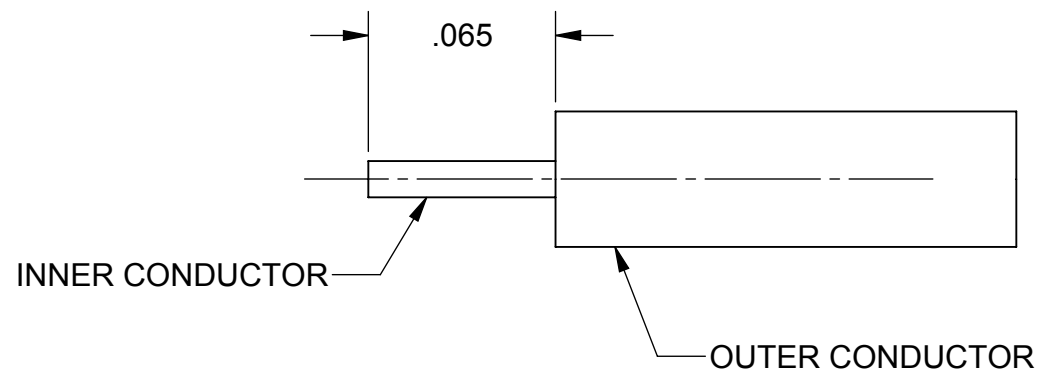
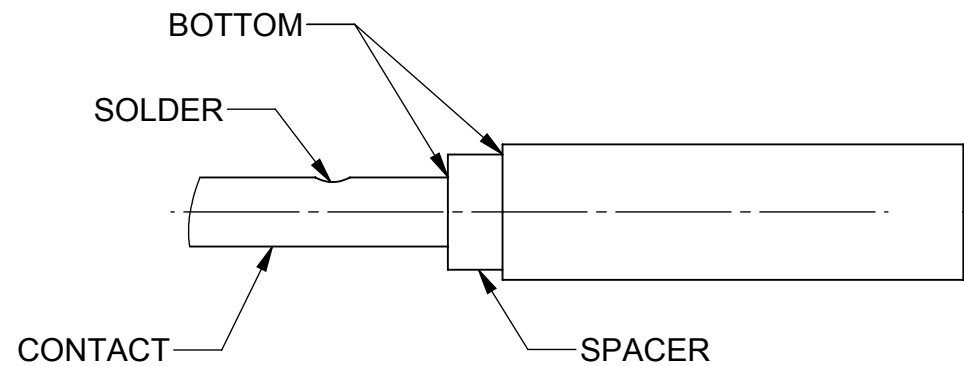


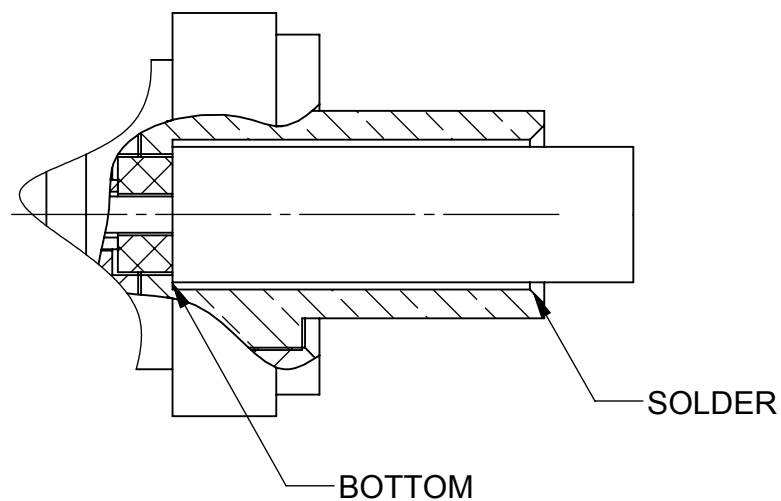
REVISION HISTORY			
REV	DESCRIPTION	DATE	APPROVED
-	NRN 35965	04/10	STW



**STEP 1:**  
TRIM CABLE INNER CONDUCTOR, DIELECTRIC, AND OUTER CONDUCTOR AS SHOWN.



**STEP 2:**  
BOTTOM CONTACT AND SPACER AS SHOWN AND SOLDER TO INNER CONDUCTOR.



**STEP 3:**  
BOTTOM CABLE IN CONNECTOR AS SHOWN AND SOLDER.

SF3211-60049  
USED ON:

MATERIAL:	N/A
FINISH:	N/A
SURFACE AREA:	N/A
<b>PROPRIETARY</b>	
THE INFORMATION CONTAINED IN THIS DRAWING IS THE SOLE PROPERTY OF SV MICROWAVE, INC. ANY REPRODUCTION IN PART OR AS A WHOLE WITHOUT THE WRITTEN PERMISSION OF SV MICROWAVE, INC IS PROHIBITED.	

DIMENSIONS ARE IN INCHES TOLERANCES:	
FRACTIONAL: $\pm 1/64$	ANGULAR: X° $\pm 1'0''$ X°X' $\pm 15''$
DECIMAL: X $\pm .030$	.XX $\pm .010$
	.XXX $\pm .005$
INTERPRET DIMENSIONS AND TOLERANCES PER ASME Y14.5M - 1994	
<b>THIRD ANGLE PROJECTION</b>	

UNLESS OTHERWISE SPECIFIED	
1) ALL DIMENSIONS ARE AFTER PLATING.	
2) BREAK CORNERS & EDGES .005 R. MAX.	
3) CHAM. 1ST & LAST THREADS.	
4) SURFACE ROUGHNESS 63 / MIL-STD-10.	
5) DIA.'S ON COMMON CENTERS TO BE CONCENTRIC WITHIN .005 T.I.R.	
6) REMOVE ALL BURRS	
DRAWN:	DAL 04/12/10
CHECKED:	STW 04/12/10
APPROVED:	STW 04/12/10
E.M. SIMULATION:	N/A

<b>SV Microwave, Inc.</b>		
2400 Centrepark West Drive, Suite 100 West Palm Beach, FL 33409		
TITLE: <b>CABLE ASSEMBLY INSTRUCTIONS</b>		
SIZE	CAGE CODE	DWG. NO.
<b>B</b>	<b>95077</b>	<b>300-32-021</b>
SCALE: 15:1		SHEET 1 OF 1