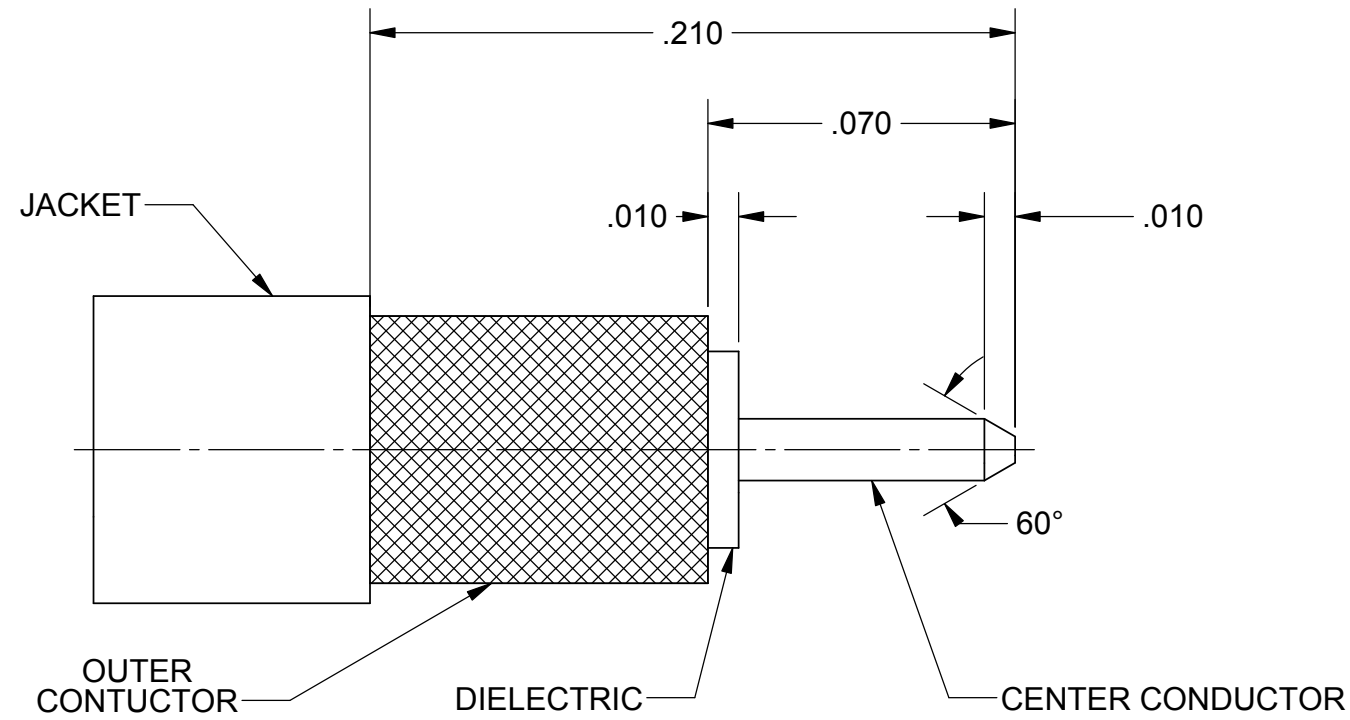
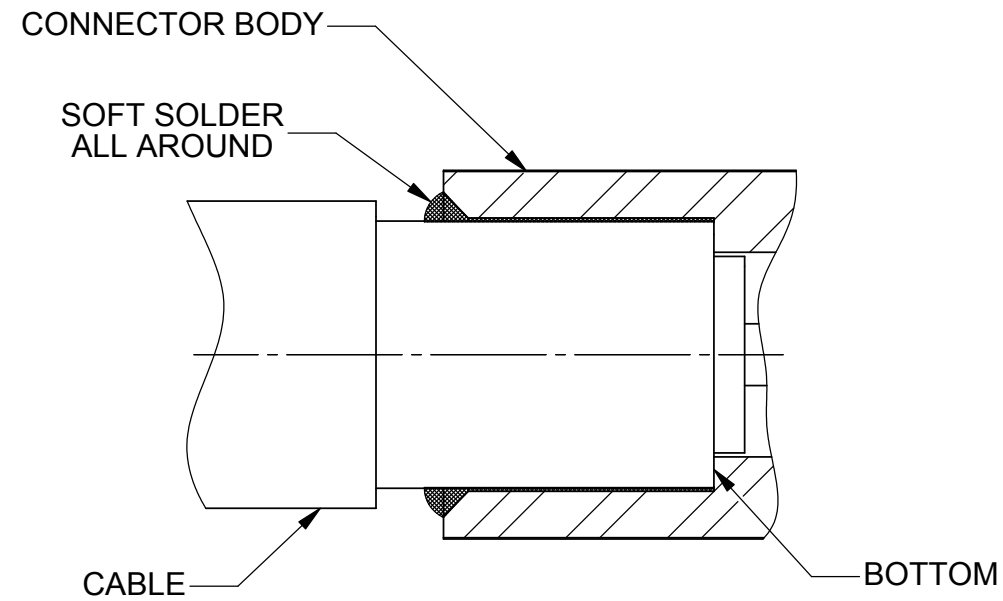


REVISION HISTORY			
REV	DESCRIPTION	DATE	APPROVED
-	REL. NRN 37514	08/01/12	STW



**STEP 1:**

TRIM CABLE TO DIMENSIONS SHOWN. DO NOT NICK INNER CONDUCTOR.



**STEP 2:**

BOTTOM CABLE OUTER CONDUCTOR AS SHOWN IN CABLE BODY. SOFT SOLDER CABLE TO CONNECTOR BODY.

MATERIAL:	N/A	DIMENSIONS ARE IN INCHES TOLERANCES: FRACTIONAL: $\pm 1/64$ ANGULAR: X° $\pm 1^{\circ}0'$ X'X' $\pm 15'$ DECIMAL: X $\pm .030$ .XX $\pm .010$ .XXX $\pm .005$	UNLESS OTHERWISE SPECIFIED 1) ALL DIMENSIONS ARE AFTER PLATING. 2) BREAK CORNERS & EDGES .005 R. MAX. 3) CHAM. 1ST & LAST THREADS. 4) SURFACE ROUGHNESS 63 $\sqrt{\text{MIL-STD-10}}$ . 5) DIA.'S ON COMMON CENTERS TO BE CONCENTRIC WITHIN .005 T.I.R. 6) REMOVE ALL BURRS	<b>SV Microwave, Inc.</b> 2400 Centrepark West Drive, Suite 100 West Palm Beach, FL 33409		
FINISH:	N/A			INTERPRET DIMENSIONS AND TOLERANCES PER ASME Y14.5M - 1994	TITLE: T-FLEX CABLE TO SMA SOLDER-ON CONNECTOR ASSEMBLY INSTRUCTIONS	
SURFACE AREA:	N/A			THIRD ANGLE PROJECTION	DRAWN: JMC 08/01/12 CHECKED: STW 08/01/12 APPROVED: STW 08/01/12 E.M. SIMULATION: N/A	DWG. NO. 300-29-121 SCALE: 20:1
PROPRIETARY THE INFORMATION CONTAINED IN THIS DRAWING IS THE SOLE PROPERTY OF SV MICROWAVE, INC. ANY REPRODUCTION IN PART OR AS A WHOLE WITHOUT THE WRITTEN PERMISSION OF SV MICROWAVE, INC IS PROHIBITED.		SF2911-60172 USED ON:	SIZE B CAGE CODE 95077	SHEET 1 OF 1		