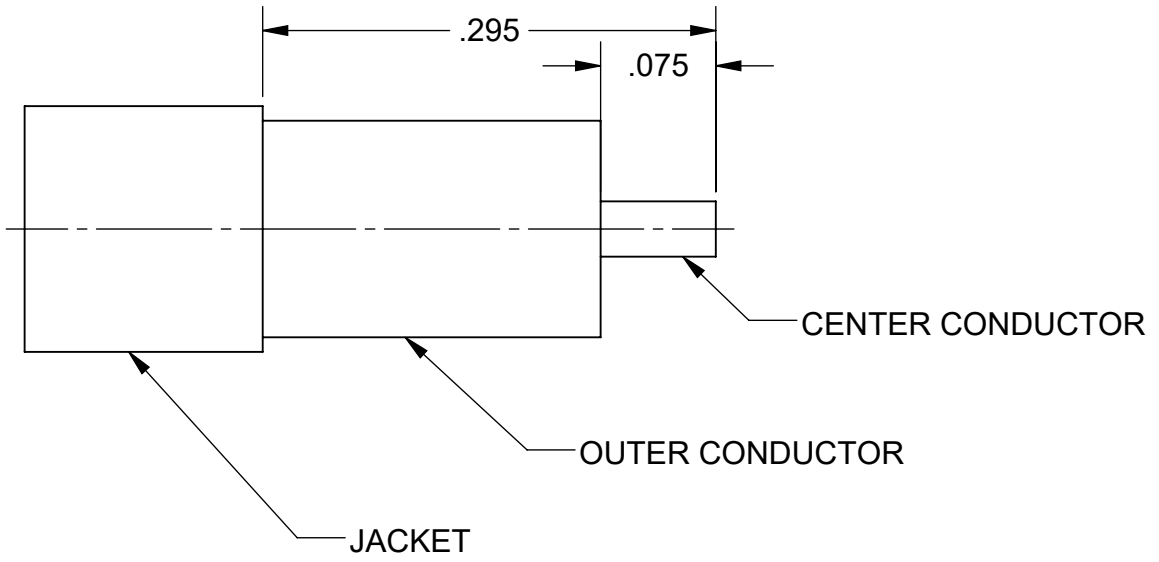
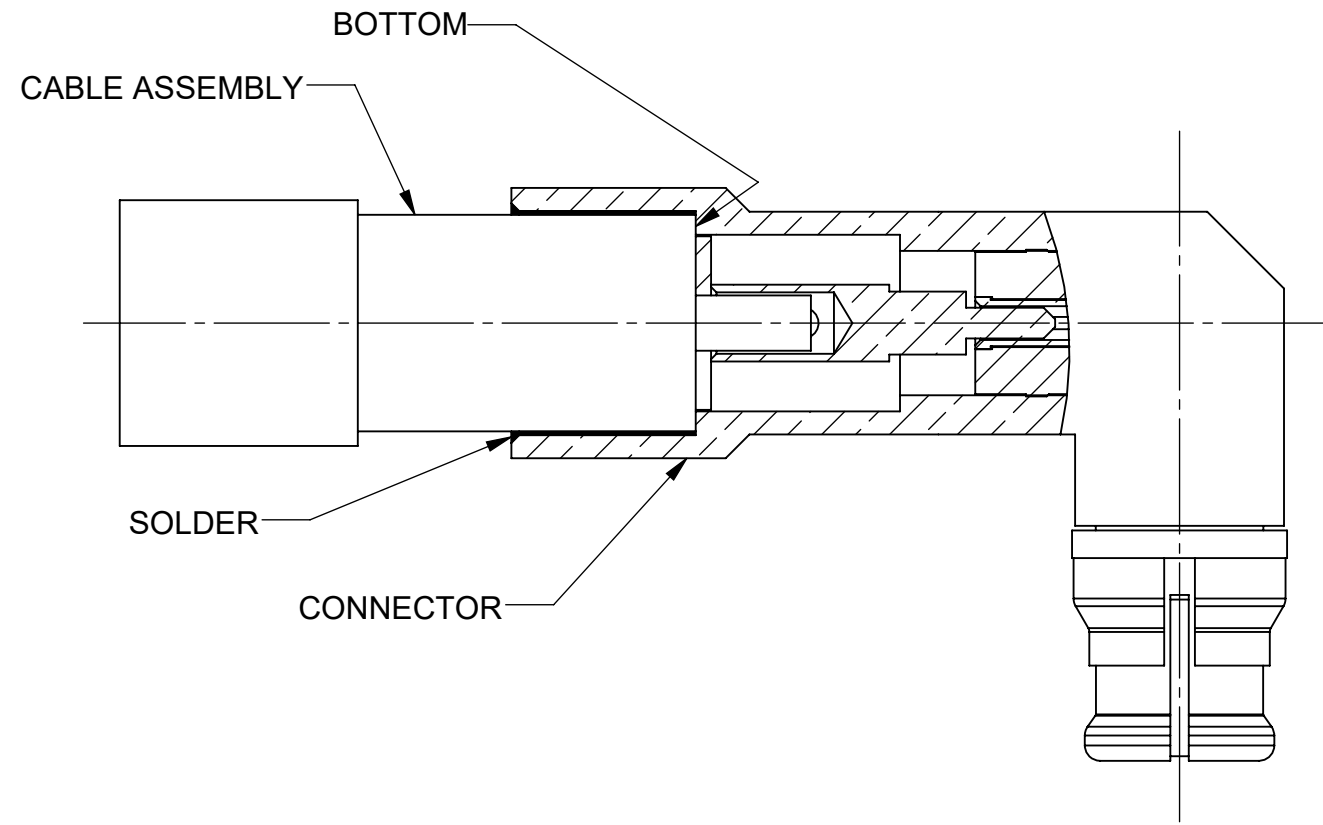


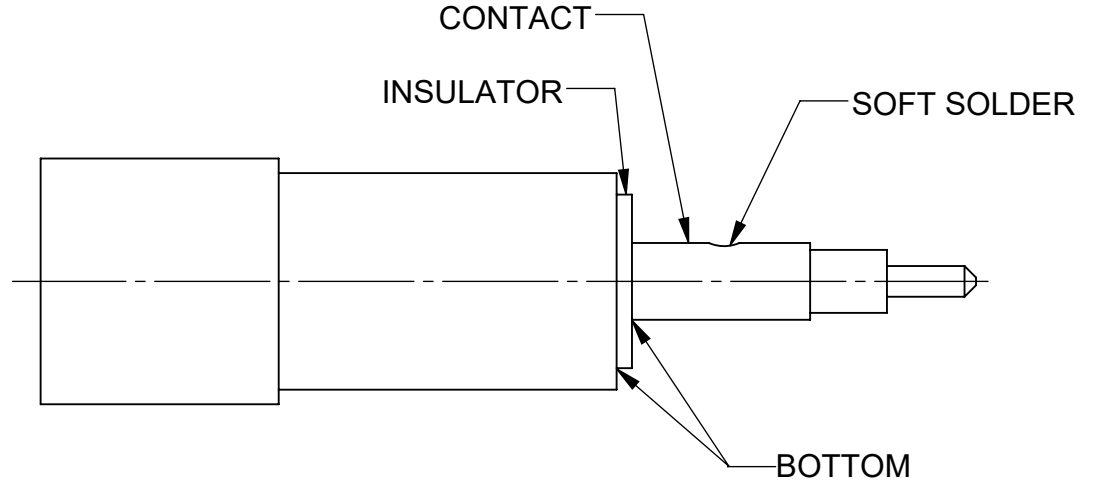
REVISION HISTORY			
REV	DESCRIPTION	DATE	APPROVED
-	NRN 33821	08/06	STW
A	DCN 49233	08/19	STW



STEP 1:
TRIM CABLE TO DIMENSIONS AS SHOWN. DO NOT NICK CENTER CONDUCTOR. REMOVE BURRS AS NECESSARY.



STEP 3:
INSTALL CABLE ASSEMBLY INTO CONNECTOR AND BOTTOM AS SHOWN. SOFT SOLDER CABLE ASSEMBLY TO CONNECTOR. REMOVE EXCESS SOLDER AS NECESSARY.




STEP 2:
INSTALL INSULATOR OVER CABLE CENTER CONDUCTOR AND BOTTOM AS SHOWN. INSTALL CONTACT ONTO CABLE CENTER CONDUCTOR AND BOTTOM AS SHOWN. SOLDER CONTACT TO CABLE CENTER CONDUCTOR. REMOVE EXCESS SOLDER AS NECESSARY.

MATERIAL:	PER BOM
FINISH:	PER BOM
SURFACE AREA:	N/A
	PROPRIETARY
THE INFORMATION CONTAINED IN THIS DRAWING IS THE SOLE PROPERTY OF SV MICROWAVE, INC. ANY REPRODUCTION IN PART OR AS A WHOLE WITHOUT THE WRITTEN PERMISSION OF SV MICROWAVE, INC IS PROHIBITED.	

DIMENSIONS ARE IN INCHES TOLERANCES:	
FRACTIONAL:	±1/64 ANGULAR: X° ±1°0' X°X' ±15'
DECIMAL:	X ±.030 .XX ±.010 .XXX ±.005
INTERPRET DIMENSIONS AND TOLERANCES PER ASME Y14.5M - 1994	
THIRD ANGLE PROJECTION	

UNLESS OTHERWISE SPECIFIED	
1) ALL DIMENSIONS ARE AFTER PLATING. 2) BREAK CORNERS & EDGES .005 R. MAX. 3) CHAM. 1ST & LAST THREADS. 4) SURFACE ROUGHNESS 63 / MIL-STD-10. 5) DIA.'S ON COMMON CENTERS TO BE CONCENTRIC WITHIN .005 T.I.R. 6) REMOVE ALL BURRS	
DRAWN:	MEB 08/24/06
CHECKED:	STW 08/24/06
APPROVED:	STW 08/24/06
E.M. SIMULATION:	N/A


 2400 Centrepark West Drive, Suite 100
 West Palm Beach, FL 33409

TITLE: CABLE ASSEMBLY INSTRUCTIONS

SIZE	CAGE CODE	DWG. NO.
B	95077	300-12-014

SCALE: 8:1 SHEET 1 OF 1

1222-40063
USED ON: